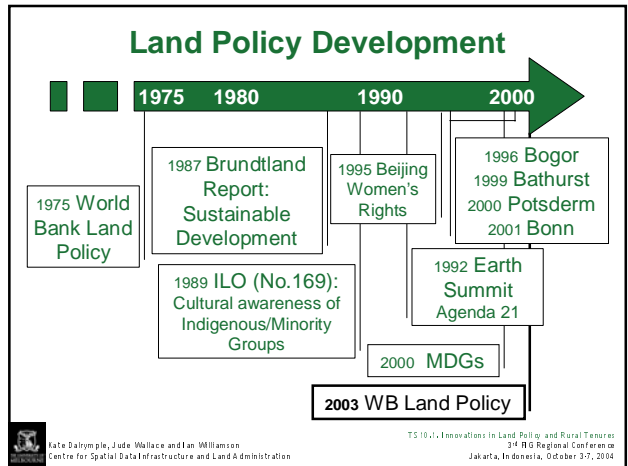


# Innovations in Rural Land Policy and Tenure in Southeast Asia

Presented by Sigit Widodo on behalf of  
**Kate Dalrymple**  
The University of Melbourne

3<sup>rd</sup> Regional FIG Conference  
Jakarta, Indonesia, October 4-7<sup>th</sup> 2004

Centre for Spatial Data Infrastructure and Land Administration  
kate@sunrise.sli.unimelb.edu.au

## Poverty Reduction Strategies

Millennium Development Goals:  
... internationally agreed upon targets for reducing poverty, hunger, disease, illiteracy, environmental degradation and discrimination against women by 2015.  
[www.unmillenniumproject.org](http://www.unmillenniumproject.org)

UN Habitat Secure Tenure Campaign  
...to promote secure forms of tenure for the poorest populations, especially those living in informal settlements and slums in cities.  
[www.unhabitat.org/campaigns/tenure](http://www.unhabitat.org/campaigns/tenure)





Kate Dalrymple, Jude Wallace and Ian Williamson  
Centre for Spatial Data Infrastructure and Land Administration

TS10.1.1. Innovations in Land Policy and Rural Tenures  
3<sup>rd</sup> FIG Regional Conference  
Jakarta, Indonesia, October 3-7, 2004

## Informal Settlements

Urbanisation – people attracted to life in the city

- Rapid increase in settlements with inadequate infrastructure and services
- Settlements not recognised by legal instruments
- Environment and health conditions decrease
- ... **poverty.**

Kate Dalrymple, Jude Wallace and Ian Williamson  
Centre for Spatial Data Infrastructure and Land Administration

TS10.1.1. Innovations in Land Policy and Rural Tenures  
3<sup>rd</sup> FIG Regional Conference  
Jakarta, Indonesia, October 3-7, 2004

## Complexity of Tenures - URBAN

- Continuum of tenure scenarios (Payne)
- Integration of secure tenure through:
  - anti-eviction laws;
  - water, sewerage and other utilities based access;
  - contractual agreements written and/or oral;
  - recognition of local records, registers, bills;
  - local authority cadastral information;
  - eventually, title or deeds registration

(Augustinus, 2003)

## Intractable Rural Tenure Difficulties

- Remoteness
- Vulnerability
- Entwined with survival
- Communal access to resources
- Land distribution is social and unique
- Land in conflict
- Integrating product, labour and food markets
- Authorisation by extra-legal power



## Complexity of Tenures - RURAL

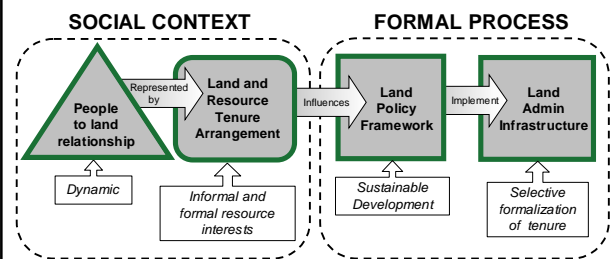
- complex and overlapping
- diverge from typical private tenure
- require integrated rural strategies

Alternative to private tenure:

**Africa:** Customary ownership (legal), occupancy certificates, communal property associations, village titles  
(van der Molen, 2003)

**Asia:** Stage entitlement of rights, use certificate → ownership title, Community titling  
(Thailand Land Titling Project)

## Formalisation Process



## Conclusion

Solutions for the rural poor require:

- flexibility
- utilisation of local systems
- local participation
- integrated approach
- identification of rural constraints
- alternatives to formal markets

## Acknowledgements

Paper co-authored by Ms. **Jude Wallace** and Professor **Ian Williamson**, Centre for Spatial Data Infrastructures and Land Administration

Research Scholarship from **Spatial Information Infrastructure**, Department of Sustainability and Environment, Victoria

Host during field research Cambodia, November 2003 – February 2004, Ministry of Land Management, Urban Planning and Construction, **LMAP**, Cambodia

## Acknowledgements

Special thanks to Mr Sigit Widodo for presenting on my behalf.

Please forward comments/questions  
[kate@sunrise.sli.unimelb.edu.au](mailto:kate@sunrise.sli.unimelb.edu.au)



Kate Dalrymple, Jude Wallace and Ian Williamson  
Centre for Spatial Data Infrastructure and Land Administration

TS10-11, Innovations in Land Policy and Rural Tenures  
34 Regional Conference  
Jakarta, Indonesia, October 3-7, 2004