



FIG Working Week 2024

19-24 May

Accra, Ghana

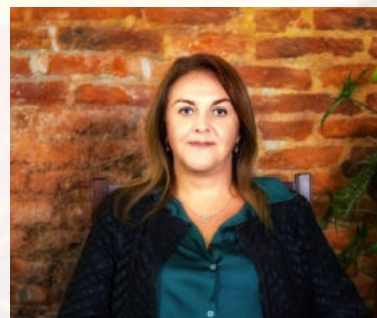
Your World, Our World:
Resilient Environment
and Sustainable
Resource Management
for All

Presented at the FIG Working Week 2024,
19-24 May 2024 in Accra, Ghana

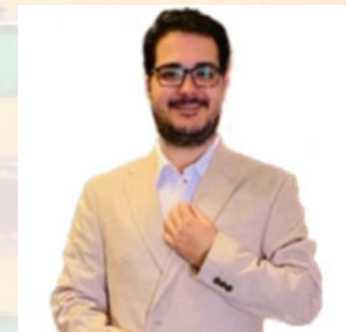
GLOBAL SURVEY ON ACADEMIC EDUCATION IN LAND SURVEYING/GEOMATICS



Dimo Todorosky
(C2 Chair)



Rosario Casanova
(C2 Vice-Chair)



Angel Collado
(YSN Representative to C2)



FIG Working Week 2024

19-24 May

Accra, Ghana

Your World, Our World:
Resilient Environment
and Sustainable
Resource Management
for All



Working Plan 2023–2026

Project of Commission 2 in collaboration with YSN

GLOBAL INVENTORY ON ACADEMIC EDUCATION IN LAND SURVEYING/GEOMATICS



ORGANISED BY



PLATINUM SPONSORS





FIG Working Week 2024

19-24 May

Accra, Ghana

Your World, Our World:
Resilient Environment
and Sustainable
Resource Management
for All

WHY? AND GOALS

- To better know and understand our academic discipline worldwide
- To analyze the learning contents of the curriculum and other academic issues
- To strengthen FIG's professional and academic networks
- By means of an online survey filled out by the teaching staff around the world

Global Inventory displayed in an accessible and interactive web map viewer



FIG Working Week 2024

19-24 May

Accra, Ghana

Your World, Our World:
Resilient Environment
and Sustainable
Resource Management
for All

METHODOLOGY

GLOBAL ONLINE SURVEY

- Basic information about the university and contact details
- Questions about the Bachelor's Degree and its curriculum
- Question about the professional requirements in your country
- Personal opinions about the current and future situation of our discipline
- Personal opinions about the meaning and relationship of different disciplines related to our profession.

FIG International Federation of Surveyors
Fédération Internationale des Géomètres
Internationale Vereinigung der Vermessungsingenieure

GLOBAL SURVEY OF ACADEMIC EDUCATION IN LAND SURVEYING/GEOMATICS

El formulario GLOBAL SURVEY OF ACADEMIC EDUCATION IN LAND SURVEYING/GEOMATICS ya no acepta respuestas.
Si consideras que se trata de un error, intenta comunicarte con el propietario del formulario.



FIG Working Week 2024

19-24 May

Accra, Ghana

Your World, Our World:
Resilient Environment
and Sustainable
Resource Management
for All

RESPONSES

- 86 responses,
- Representing 37 countries

<https://we.tl/t-dmacmaZiEX>



https://professorangelcolladospain.on.driv.tw/FIGC2_MAP/

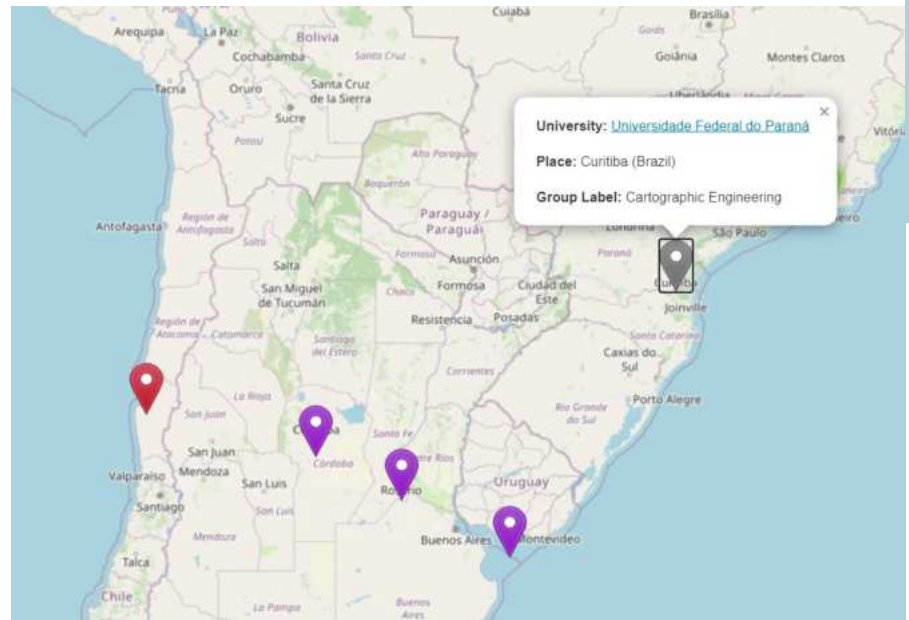
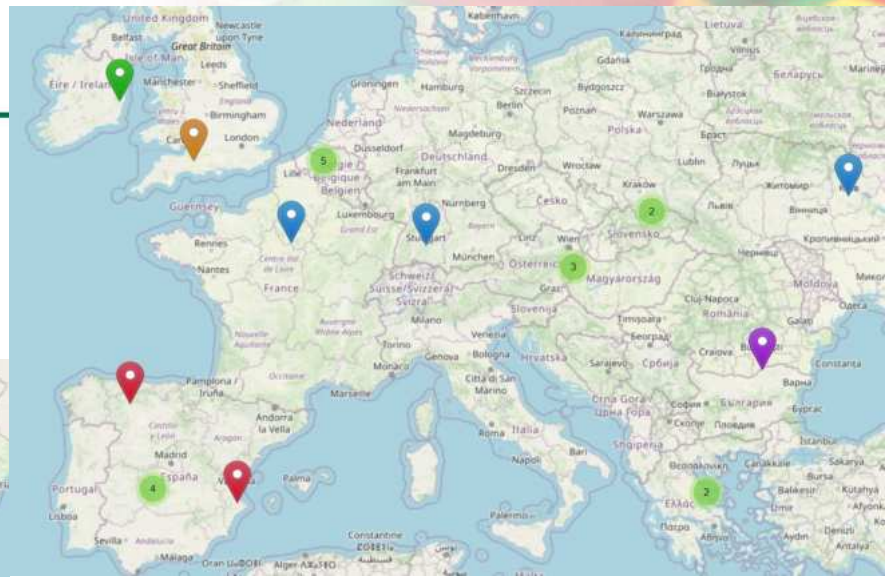



FIG Working Week 2024

19-24 May

Your World, Our World:
Resilient Environment
and Sustainable
Resource Management
for All

Paraná



-  Cadastral Engineering/
Land Administration/
Real Estate
-  Cartographic Engineering
-  Geodesy
-  Geographical - Geospatial
Engineering
-  Geoinformatics
-  Geomatics Engineering
-  Land Surveying - Surveying

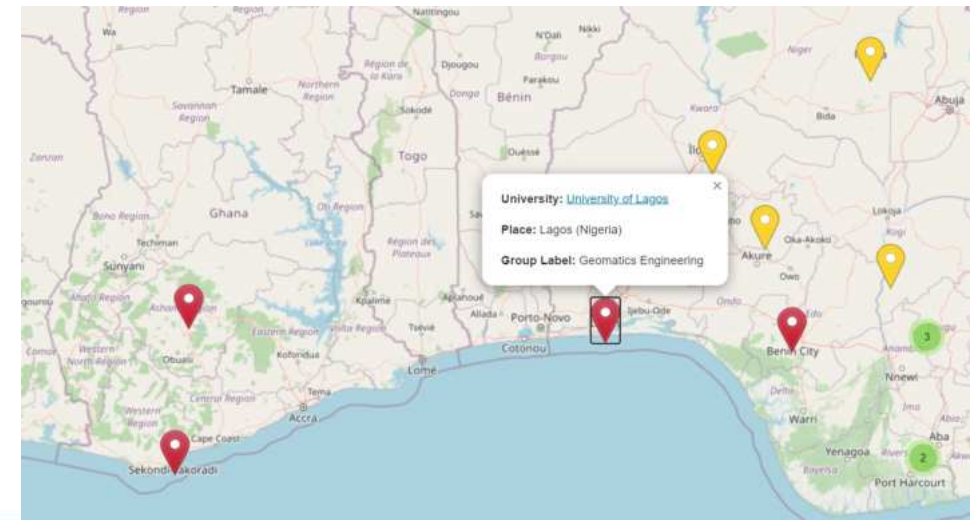




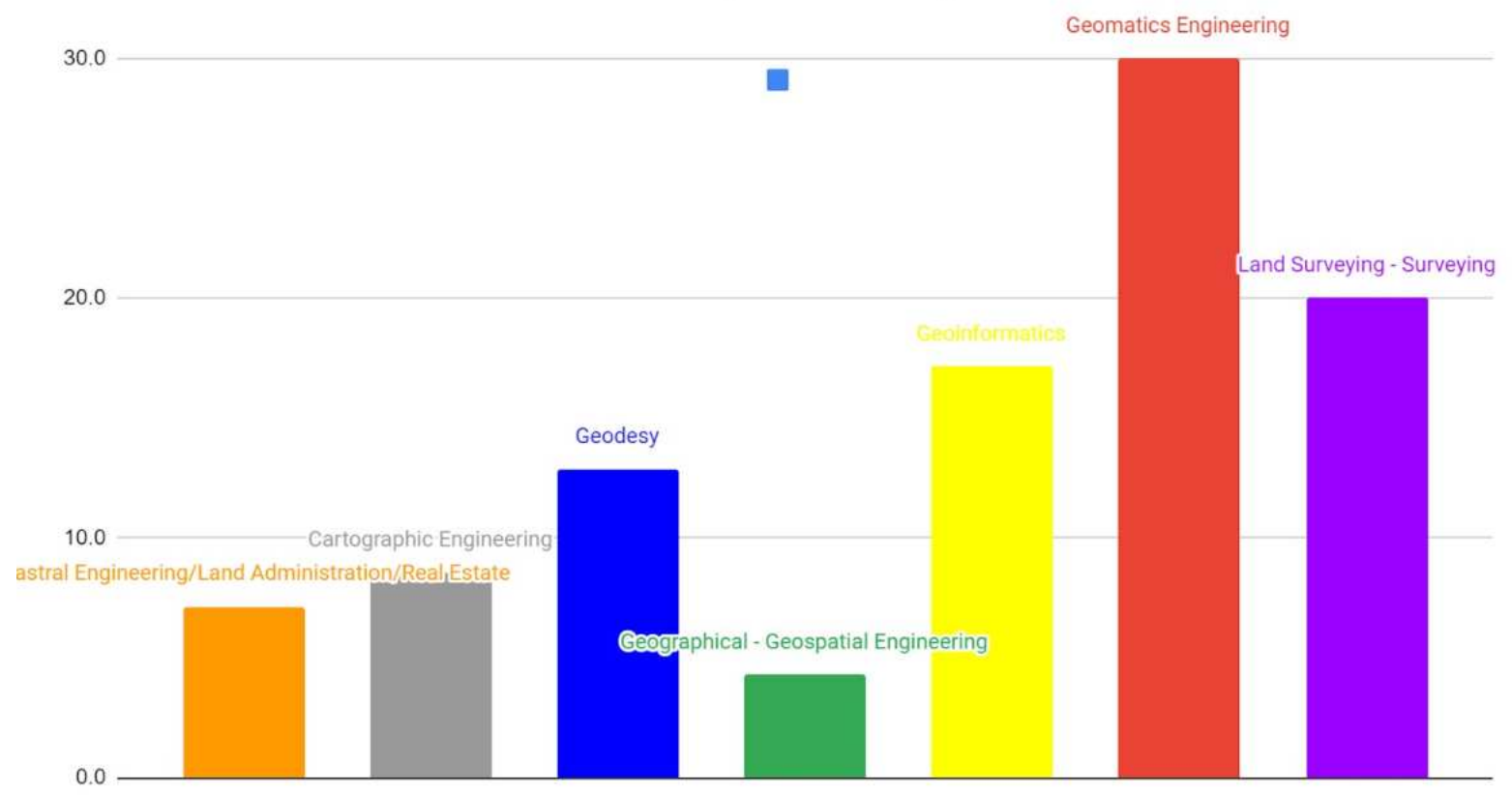
FIG Working Week 2024

19-24 May

Accra, Ghana

Your World, Our World:
Resilient Environment
and Sustainable
Resource Management
for All

Which of the following Bachelor's Degree names corresponds, most closely, to the one offered at your university?



ORGANISED BY



PLATINUM SPONSORS





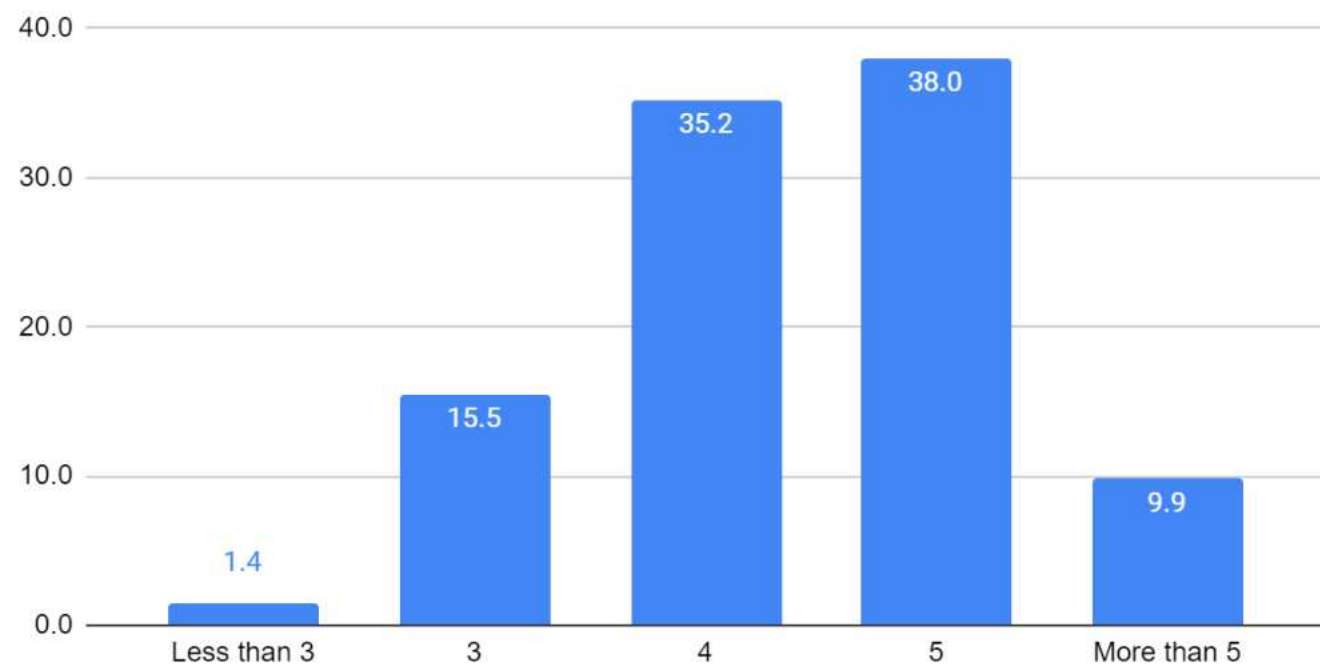
FIG Working Week 2024

19-24 May

Accra, Ghana

Your World, Our World:
Resilient Environment
and Sustainable
Resource Management
for All

What is the duration of this academic education at your university?



ORGANISED BY



PLATINUM SPONSORS





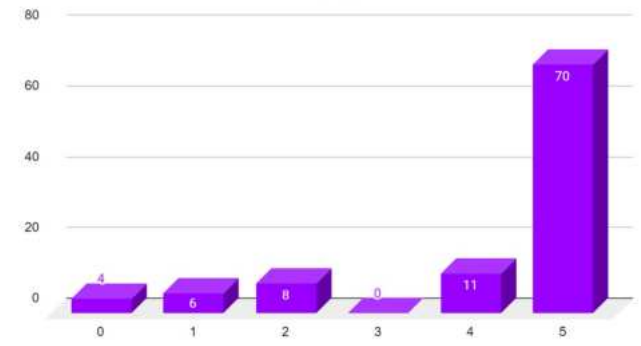
FIG Working Week 2024

19-24 May

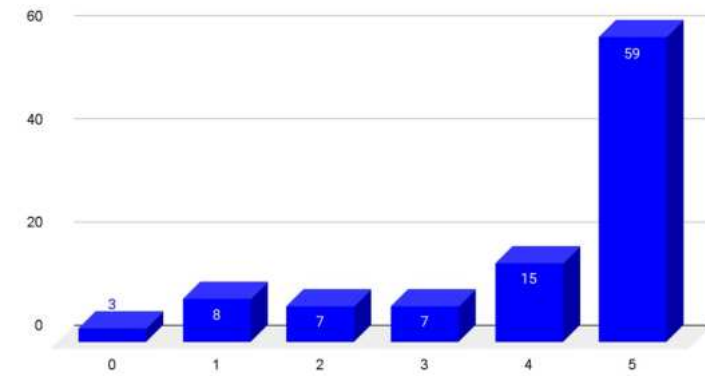
Your World, Our World:
Resilient Environment
and Sustainable
Resource Management
for All

Indicate the relevance of the following disciplines in the syllabus.

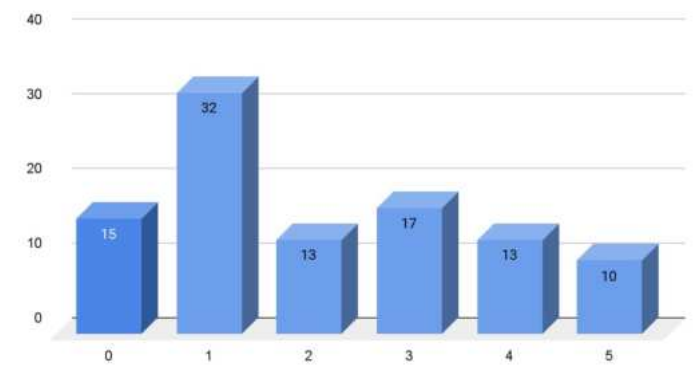
Land Surveying Methods



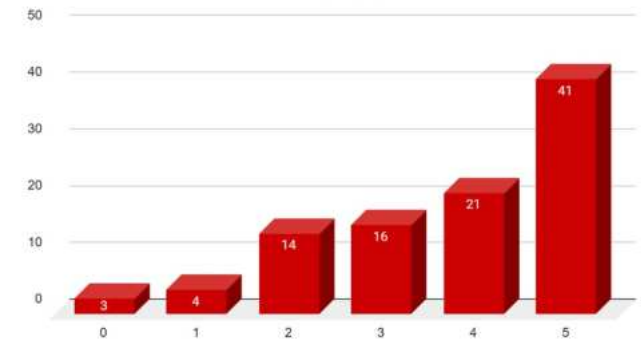
Geodesy and Map Projections



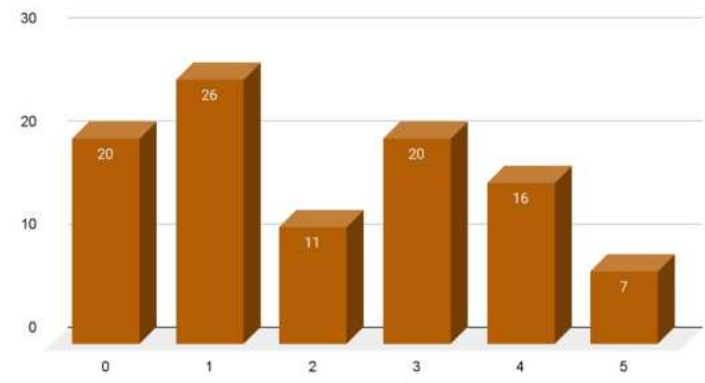
Photogrammetry and Remote Sensing



Cartography



Geophysics



Astronomy

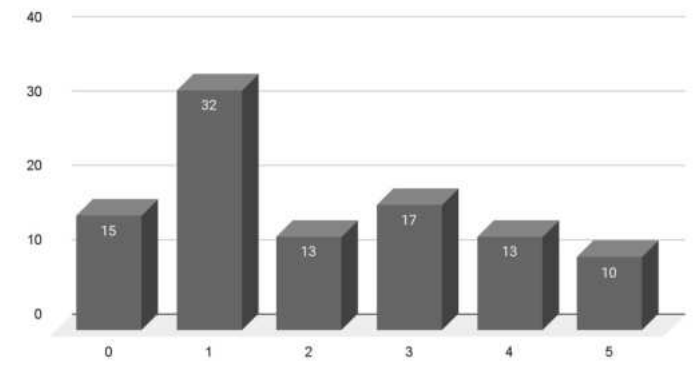


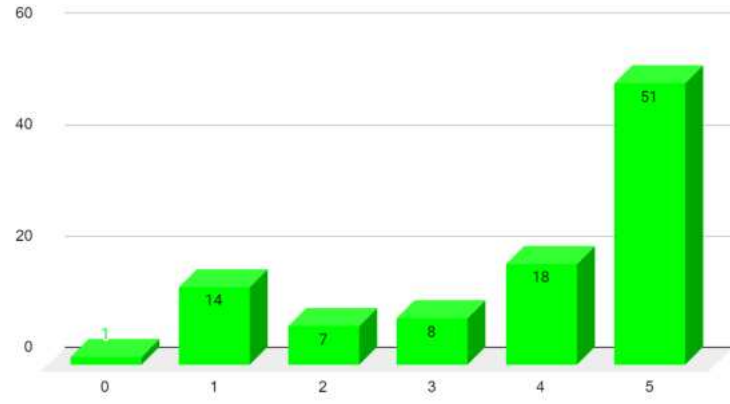


FIG Working Week 2024

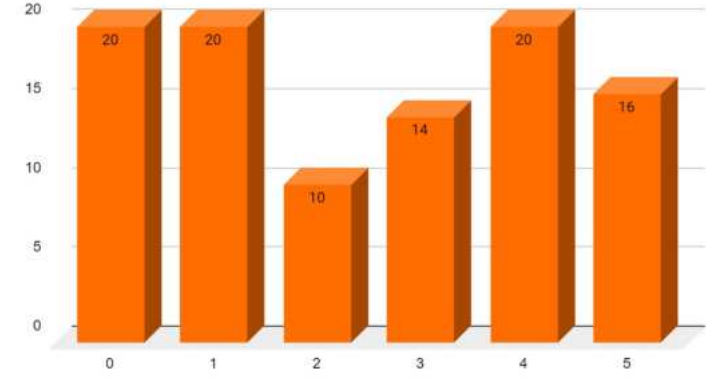
19-24 May

Your World, Our World:
Resilient Environment
and Sustainable
Resource Management
for All

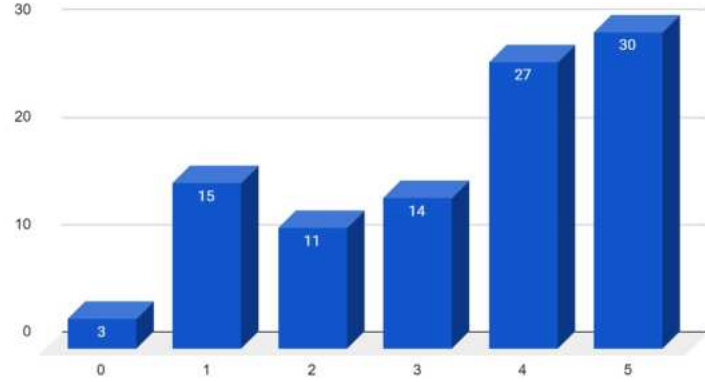
Cadastre



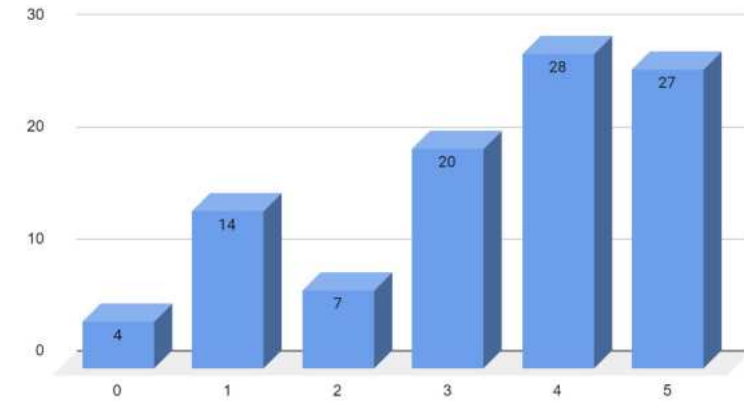
Valuations



Land Administration and Management



Land/Territorial Law



ORGANISED BY



PLATINUM SPONSORS





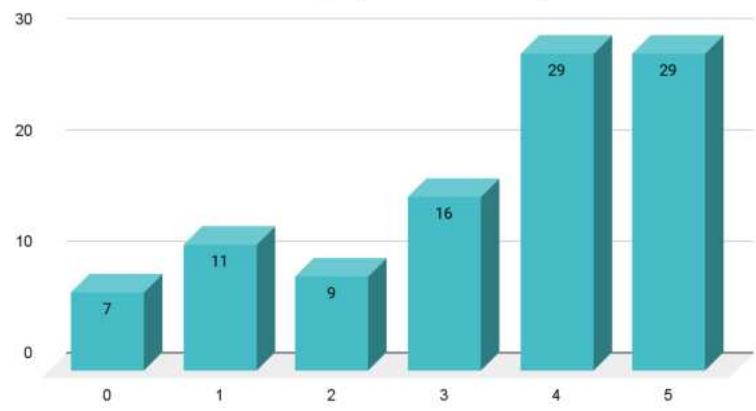
FIG Working Week 2024

19-24 May

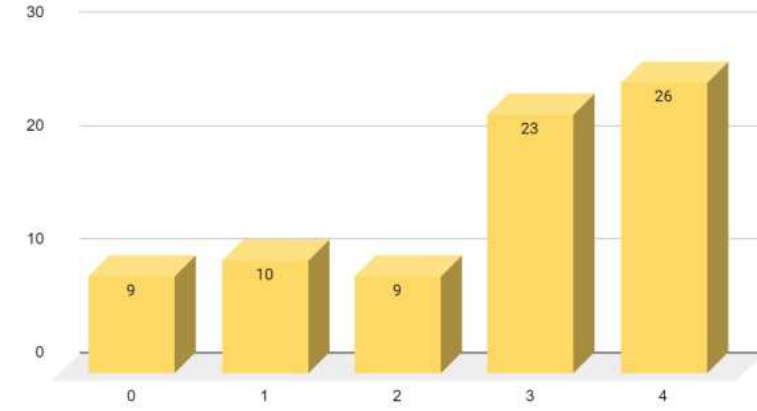
Accra, Ghana

Your World, Our World:
Resilient Environment
and Sustainable
Resource Management
for All

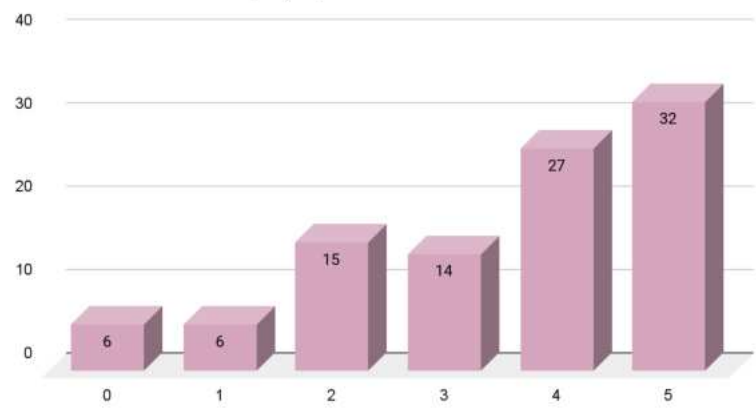
3D Surveys (LIDAR/SONAR)



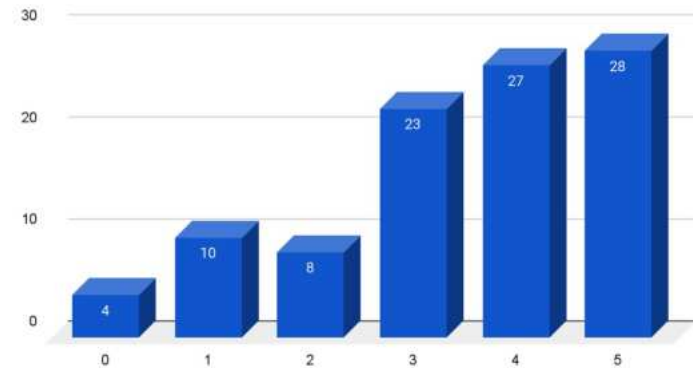
3D Modeling



Geography and Geoinformation



Geoinformation Processing (Programming)



ORGANISED BY



PLATINUM SPONSORS





FIG Working Week 2024

19-24 May

Accra, Ghana

Your World, Our World:
Resilient Environment
and Sustainable
Resource Management
for All

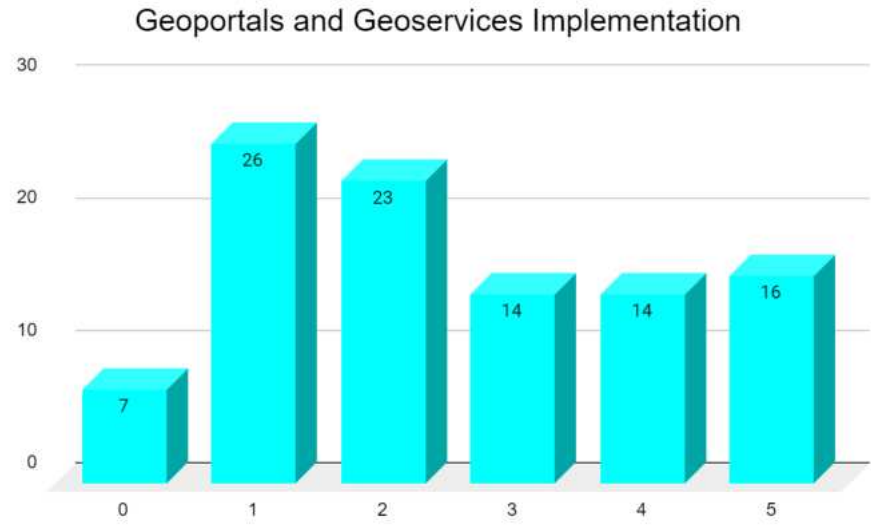
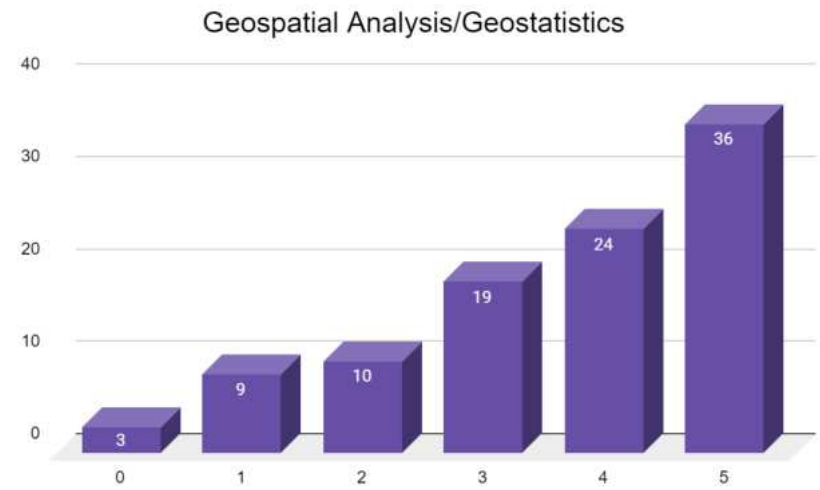
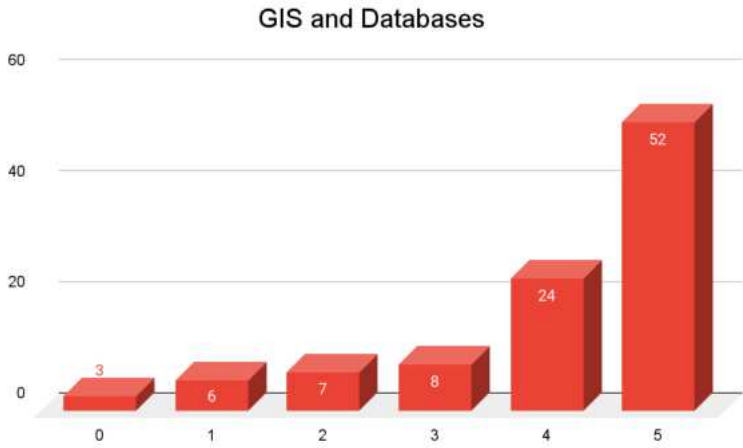




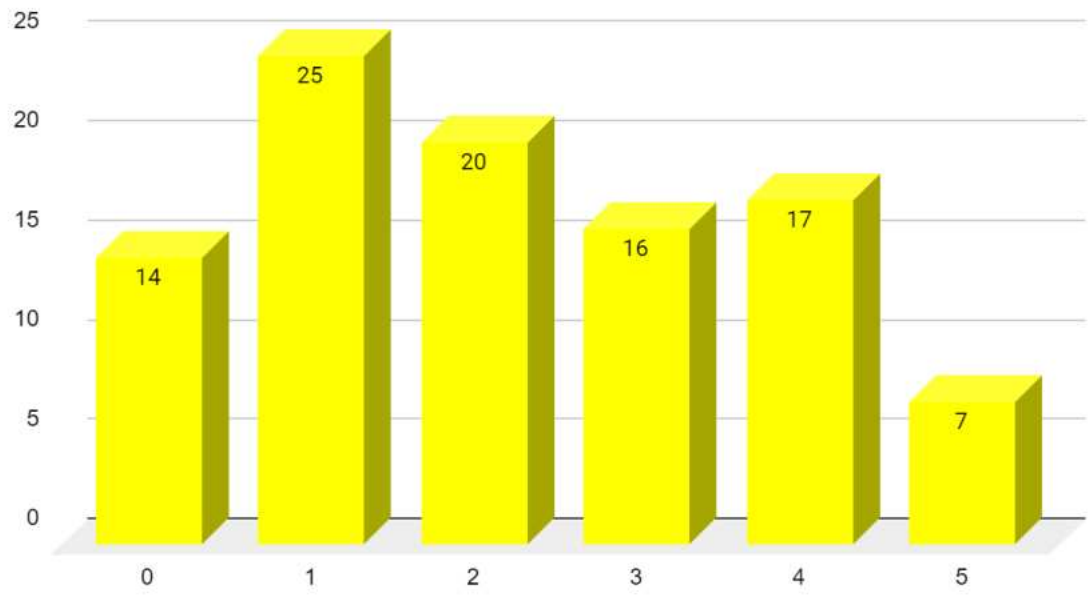
FIG Working Week 2024

19-24 May

Accra, Ghana

Your World, Our World:
Resilient Environment
and Sustainable
Resource Management
for All

Ethical use of Geographical information



Education about SDG

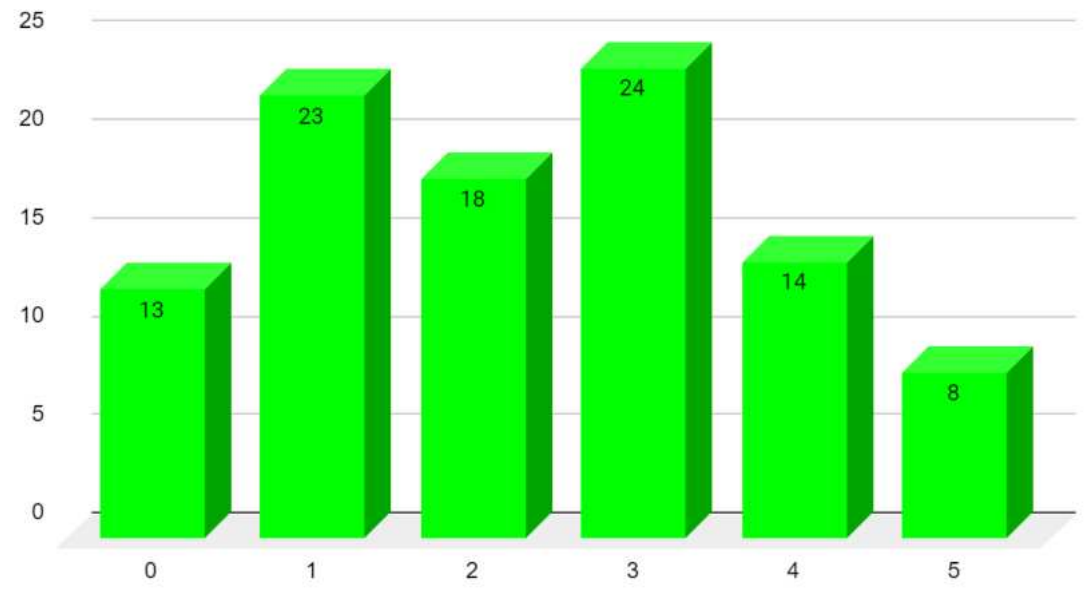




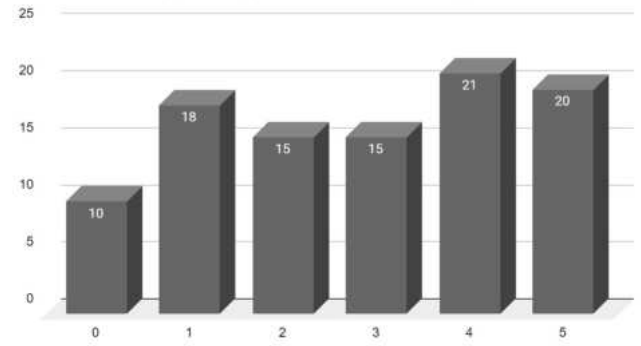
FIG Working Week 2024

19-24 May

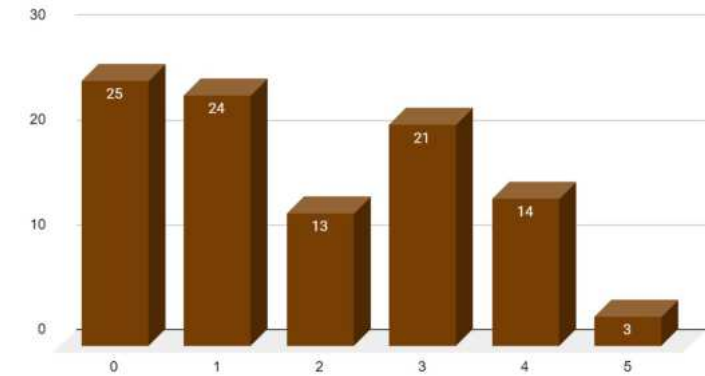
Your World, Our World:
Resilient Environment
and Sustainable
Resource Management
for All

APPLICATIONS

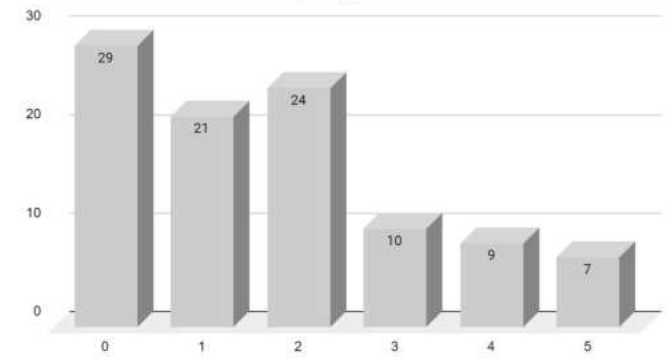
Civil Engineering and Construction Applications



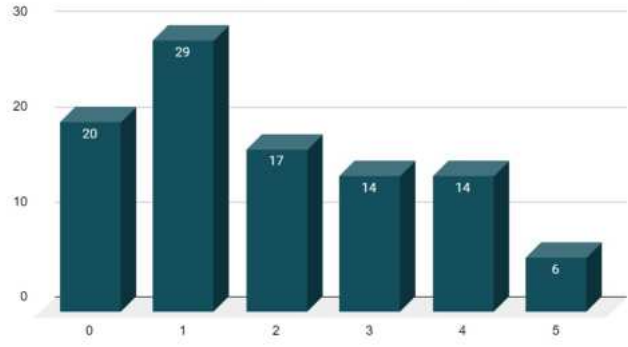
Geological-Mining Engineering Applications



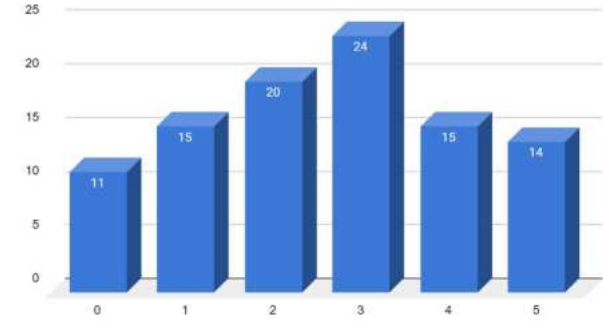
Heritage Applications



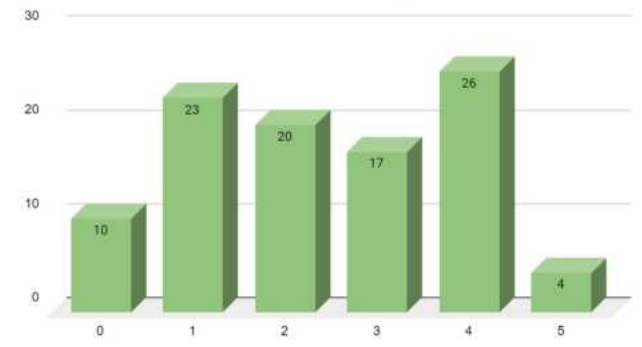
Industrial Applications and Metrology



Hydrographic Applications



Environmental/Climate Applications



ORGANISED BY



PLATINUM SPONSORS





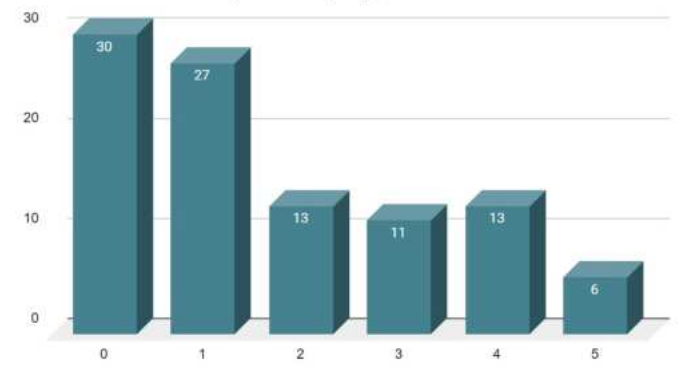
FIG Working Week 2024

19-24 May

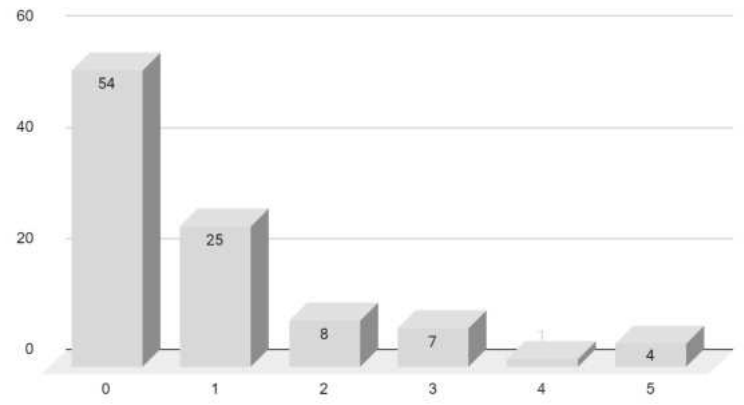
Accra, Ghana

Your World, Our World:
Resilient Environment
and Sustainable
Resource Management
for All

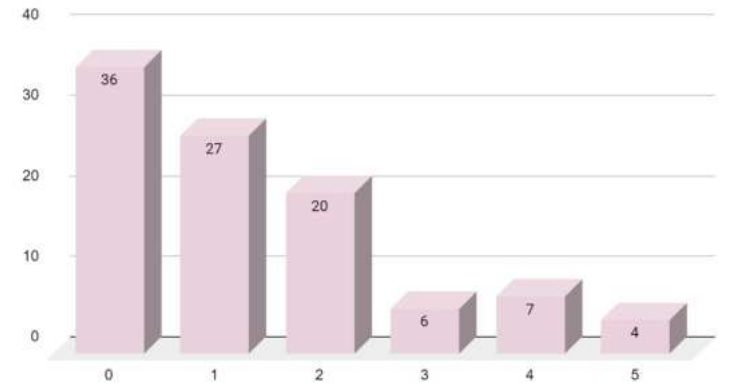
Agroforestry Applications



Medical and Forensic Applications



Geohumanities Applications



ORGANISED BY



PLATINUM SPONSORS



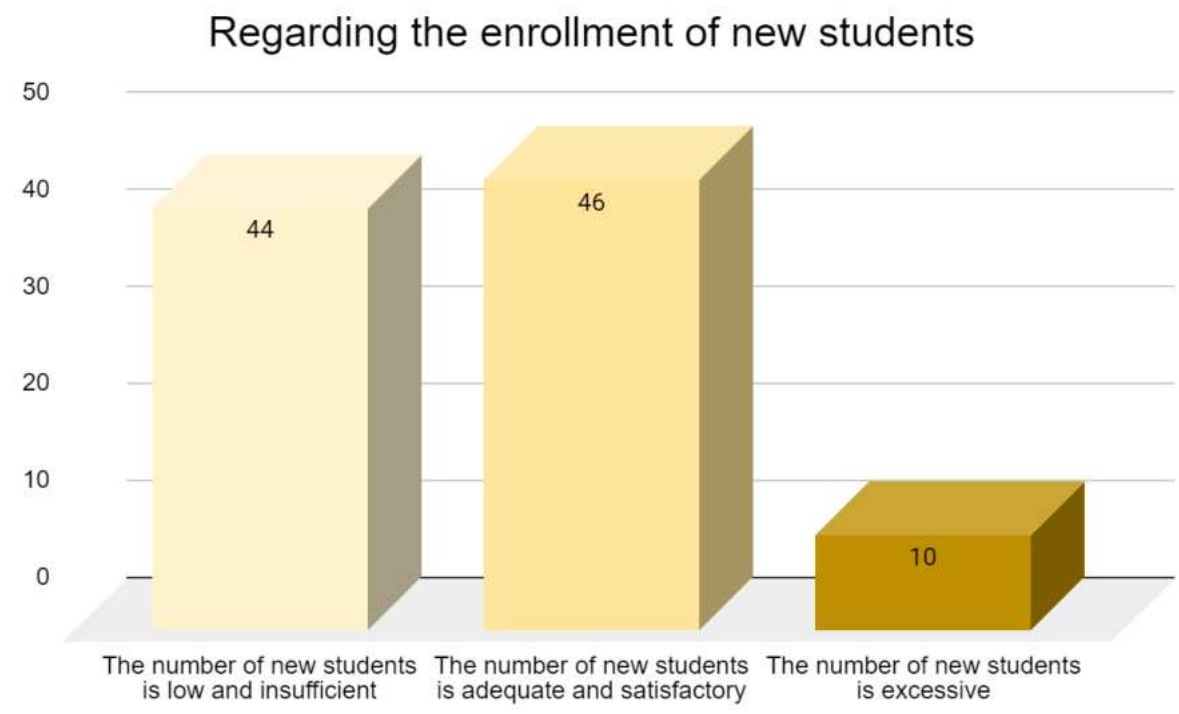


FIG Working Week 2024

19-24 May

Accra, Ghana

Your World, Our World:
Resilient Environment
and Sustainable
Resource Management
for All



ORGANISED BY



PLATINUM SPONSORS





FIG Working Week 2024

19-24 May

Accra, Ghana

Your World, Our World:
Resilient Environment
and Sustainable
Resource Management
for All

What do you understand by Geomatics, Land Surveying, Land Administration, Land Management and Geospatial Science? What do you think is the relationship between all them in your country?

Some of the responses...

Land surveying underpins the cadastre (land admin) which underpins the economy of a country.

Surveying is an undergraduate university profession with a clear and defined professional profile that includes in its professional scope the following disciplines: Geomatics, land administration and management.

Geomatics provides the correct tools and techniques for collecting and managing geospatial data, with land surveying being used as a term by many professionals, instead of geomatics. Land administration and land management rely on geospatial data and analysis to make informed decisions about land use and tenure

Geomatics, Land Surveying, Land Administration, Land Management, and Geospatial Science are related fields that deal with the collection, analysis, interpretation, and management of spatial or geographic information. Each term has a specific focus within this broader domain.





FIG Working Week 2024

19-24 May

Accra, Ghana

Your World, Our World:
Resilient Environment
and Sustainable
Resource Management
for All

Geomatics is the discipline concerned with the collection, distribution, storage, analysis, processing, and presentation of geographic data or geographic information. Land surveying is the technique, profession, art, and science of determining the terrestrial two-dimensional or three-dimensional positions of points and the distances and angles between them. Land administration is the process of determining, recording and disseminating information about the ownership, value and use of land and its associated resources. Land management is the process of managing the use and development of land resources. Geospatial science is a science about the earth and the space around us. It uses information technology to collect, analyze, and model data based on location.

Geomatics is an umbrella term for all things geospatial, including land surveying and GISc. Land surveying is focused on spatial data capture and management using various tools (both ground-based, airborne, and water-based). It has less of an analysis focus than GISc, which is concerned with modelling and analysis of geospatial data. Land administration is about information management pertaining to the relationship between people and land. Land management is about effective stewardship of Earth's resources, but it also links land policy and administration within a land administration system. Geospatial science is virtually synonymous with geomatics, but extends the discipline into the data science realm in line with modern technological influences.

PLATINUM SPONSORS





FIG Working Week 2024

19-24 May

Accra, Ghana

Your World, Our World:
Resilient Environment
and Sustainable
Resource Management
for All

SUSTAINABLE DEVELOPMENT GOALS

International Federation of Surveyors supports the Sustainable Development Goals

Commission 2

Professional Education

Serving Society for the Benefit of People and Planet



ORGANISED BY



PLATINUM SPONSORS

