



XXVII FIG CONGRESS

11-15 SEPTEMBER 2022
Warsaw, Poland

Volunteering
for the future –
Geospatial excellence
for a better living

AUTOMATIC PRODUCTION OF TOPOGRAPHIC MAPS

Ph.D. Anna Bober, anna.bober@gugik.gov.pl
Director of Geodesy, Cartography and GIS Department
Head Office of Geodesy and Cartography

ORGANISED BY



geoportal.gov.pl



PLATINUM SPONSORS



THE ROLE OF MAPS



MAP PRODUCTION PROCESS



CO - OPERATION

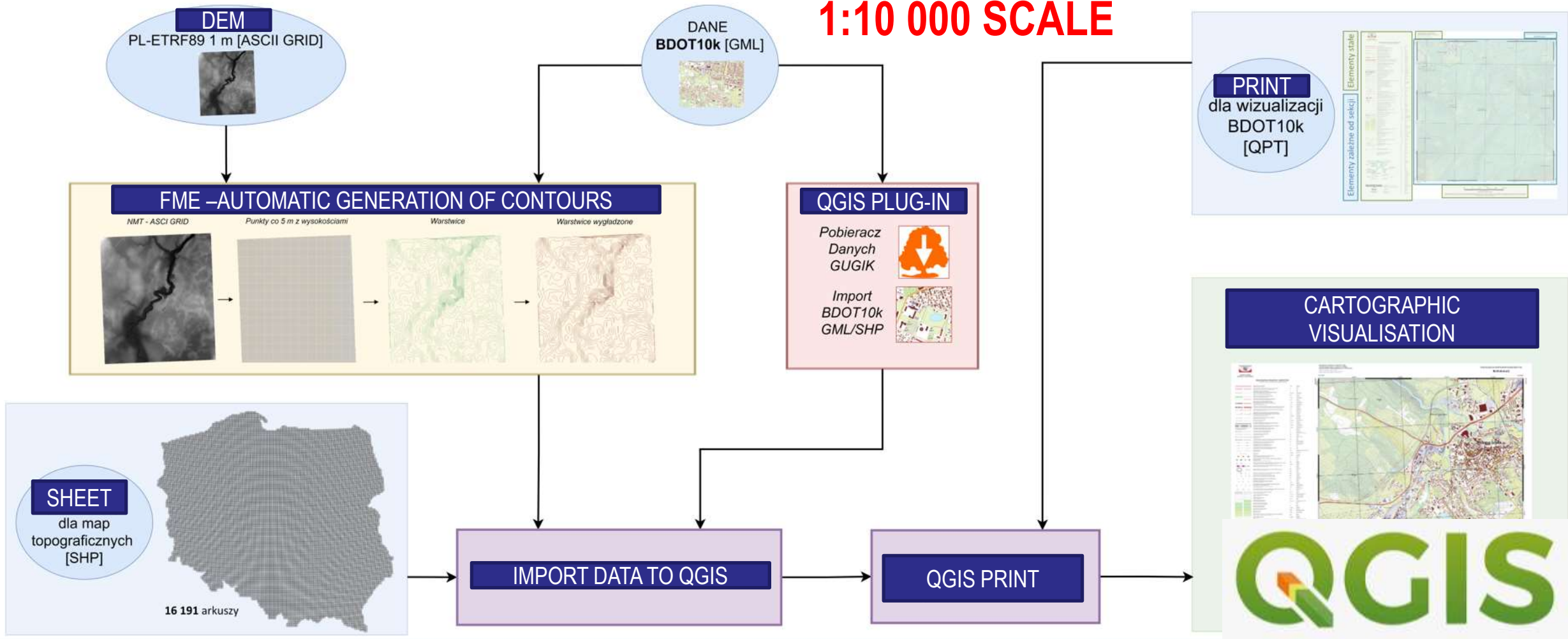


R & D ACTIVITIES

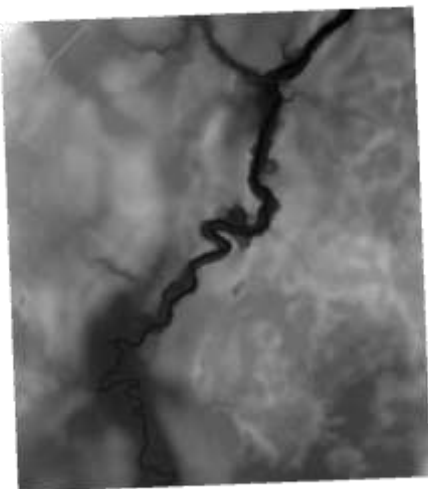


MAP PRODUCTION

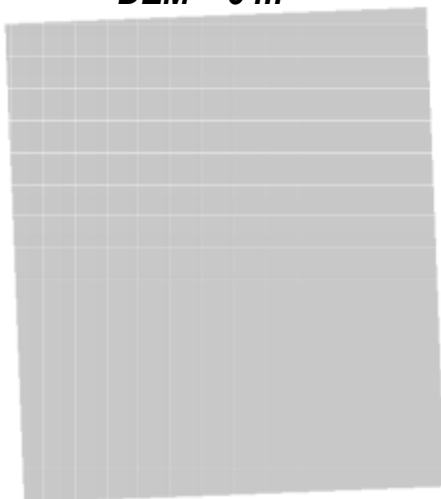
1:10 000 SCALE



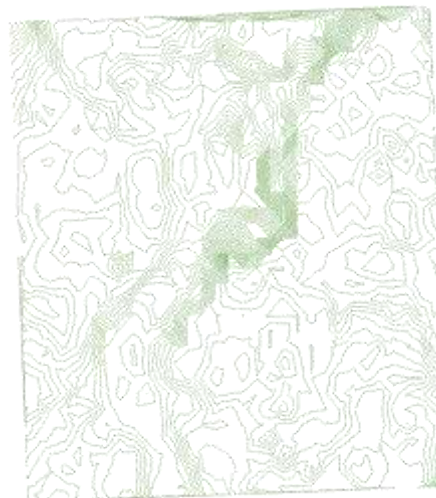
DEM - ASCII GRID 1 m



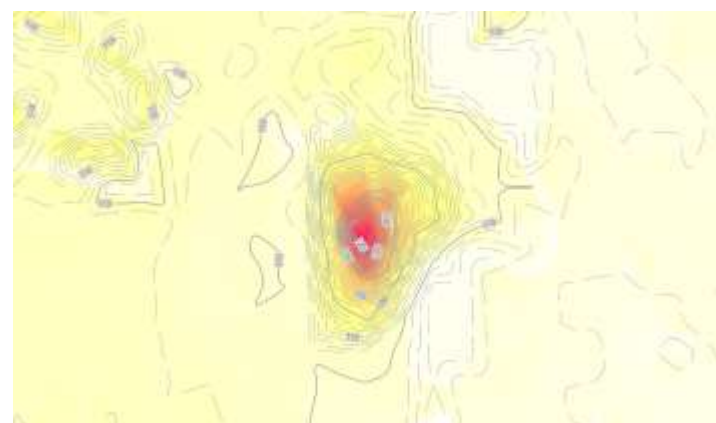
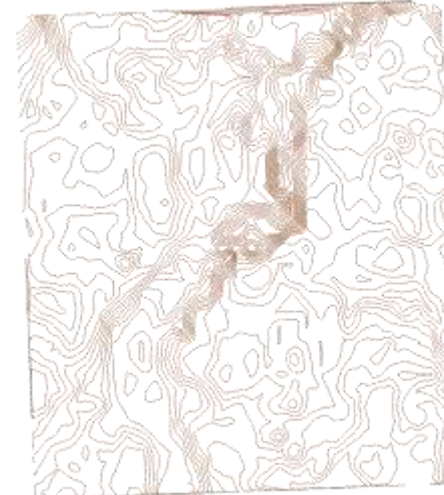
DEM - 5 m



CONTOUR LINES



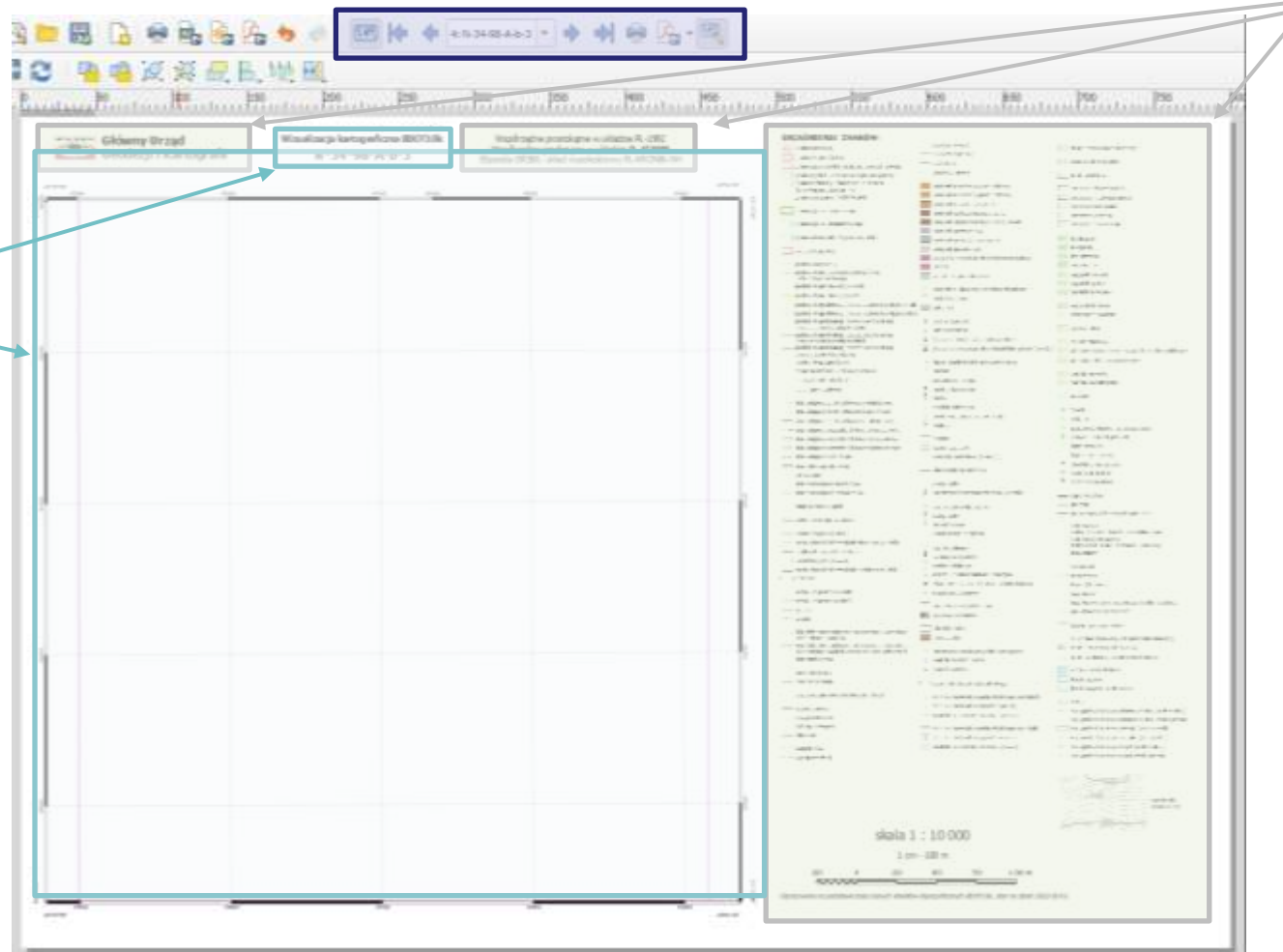
SMOOTH & SIMPLIFY



BATCH PRINTING (ATLAS)

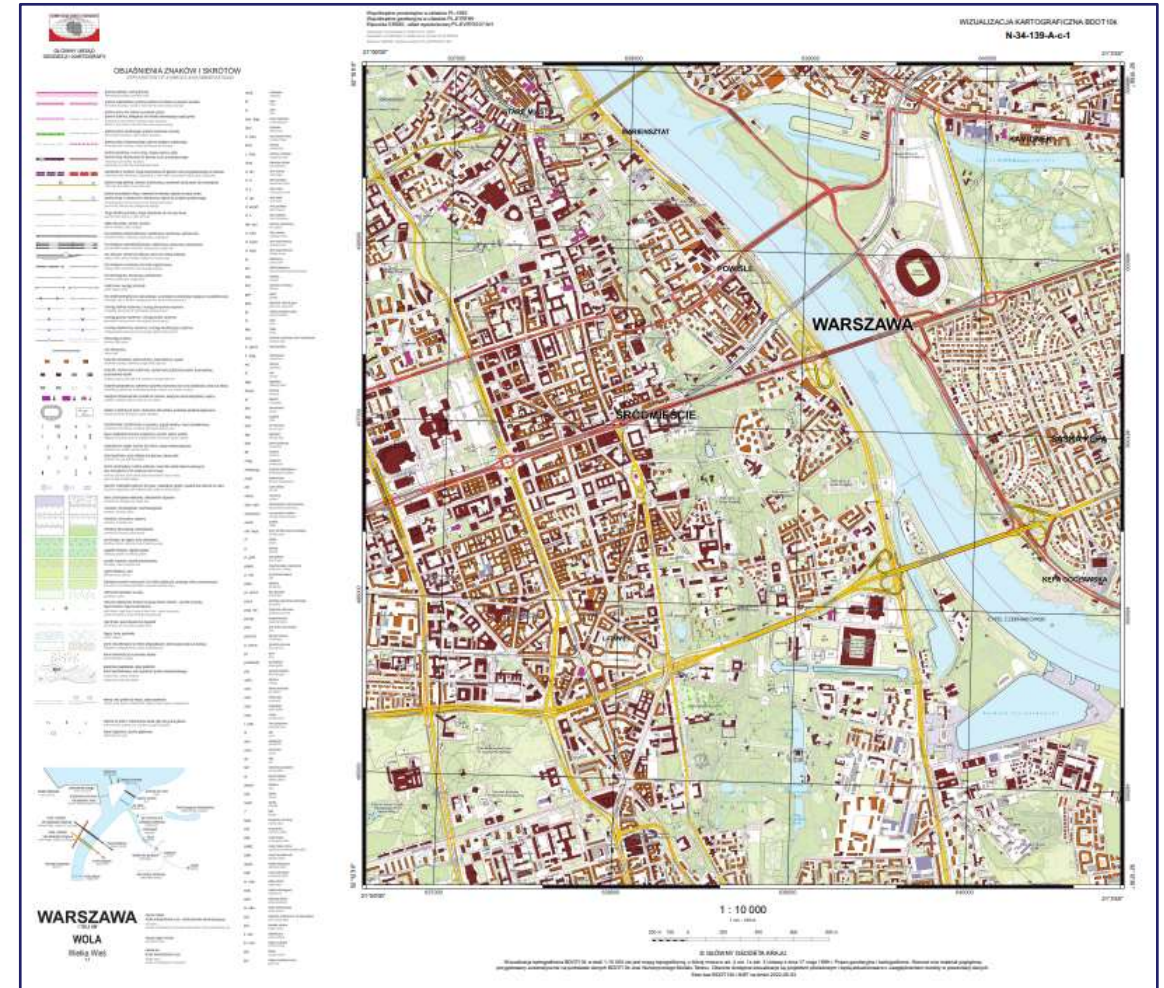
SHEET DEPENDENT OBJECTS

- Map content and range
- Map frame
- Coordinates of corners

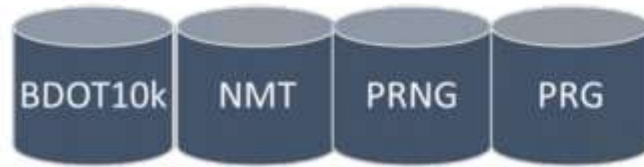


**CONSTANT
OBJECT**

Cartographic visualisation 1: 10 000



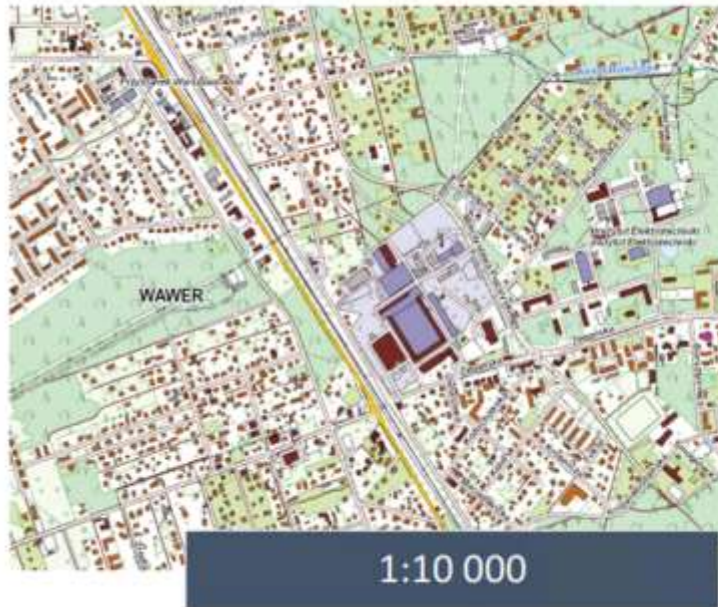
1:25 000 SCALE

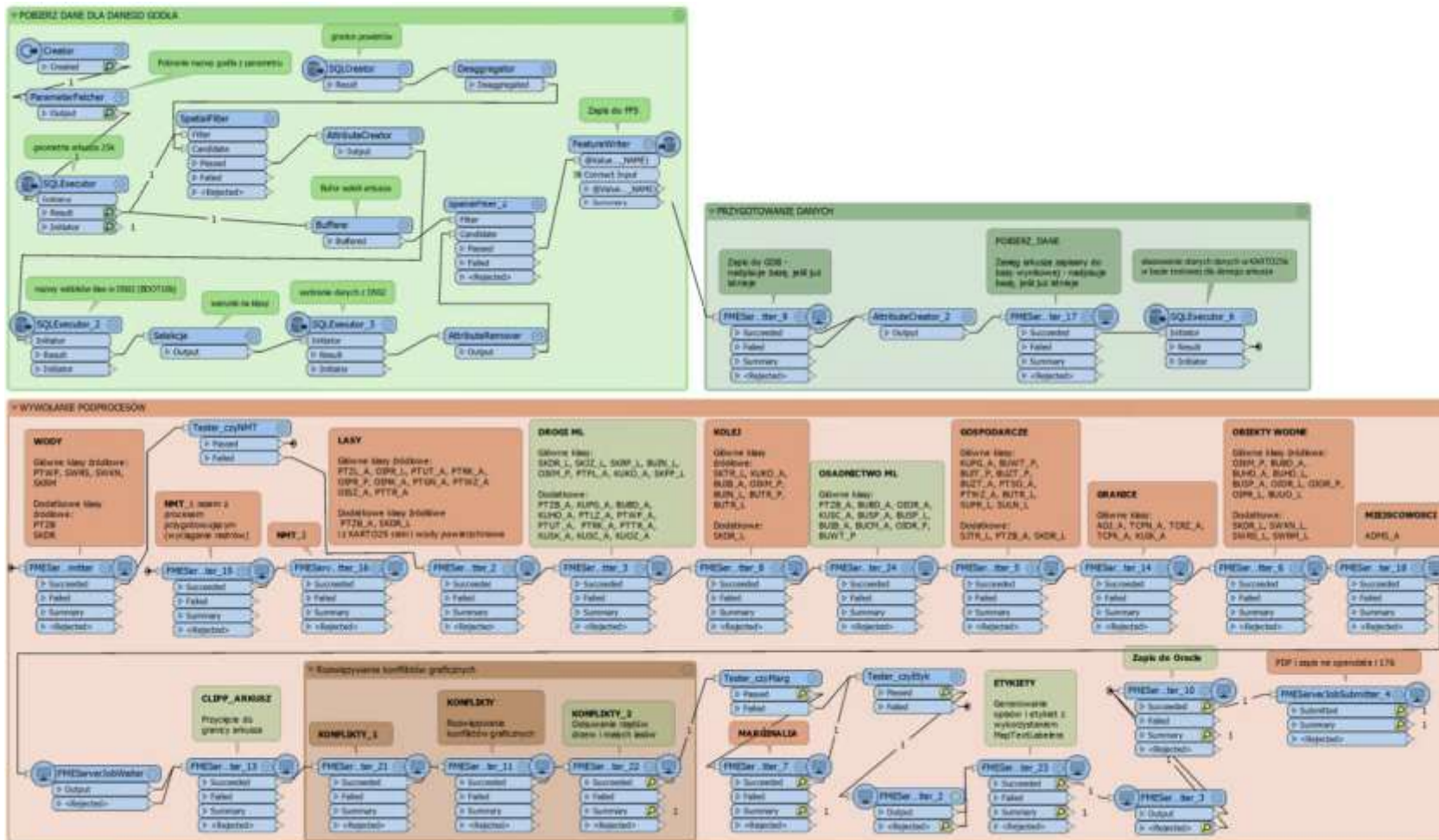


- Selection
- Quantity generalization
- Quality generalization
- Conflict reduction
- Symbology
- Frame

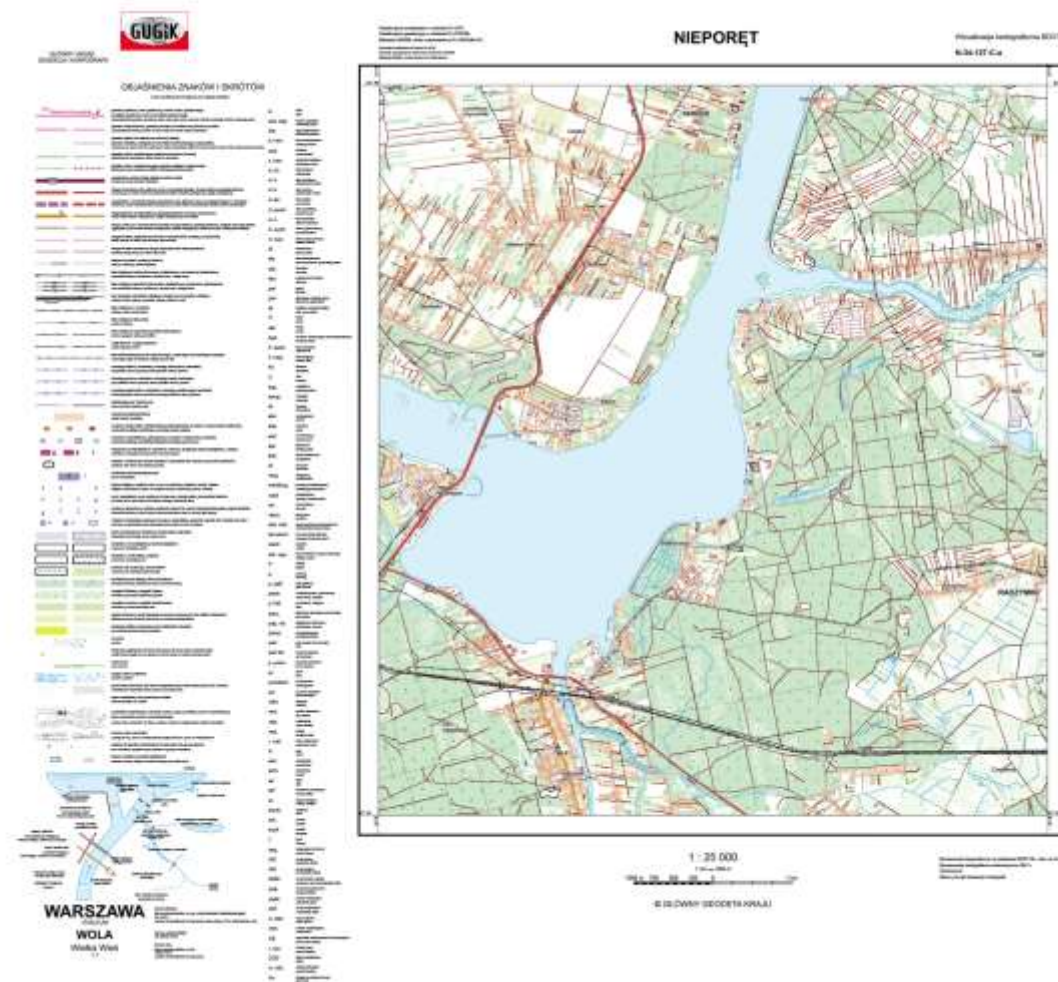


Gml
Raster

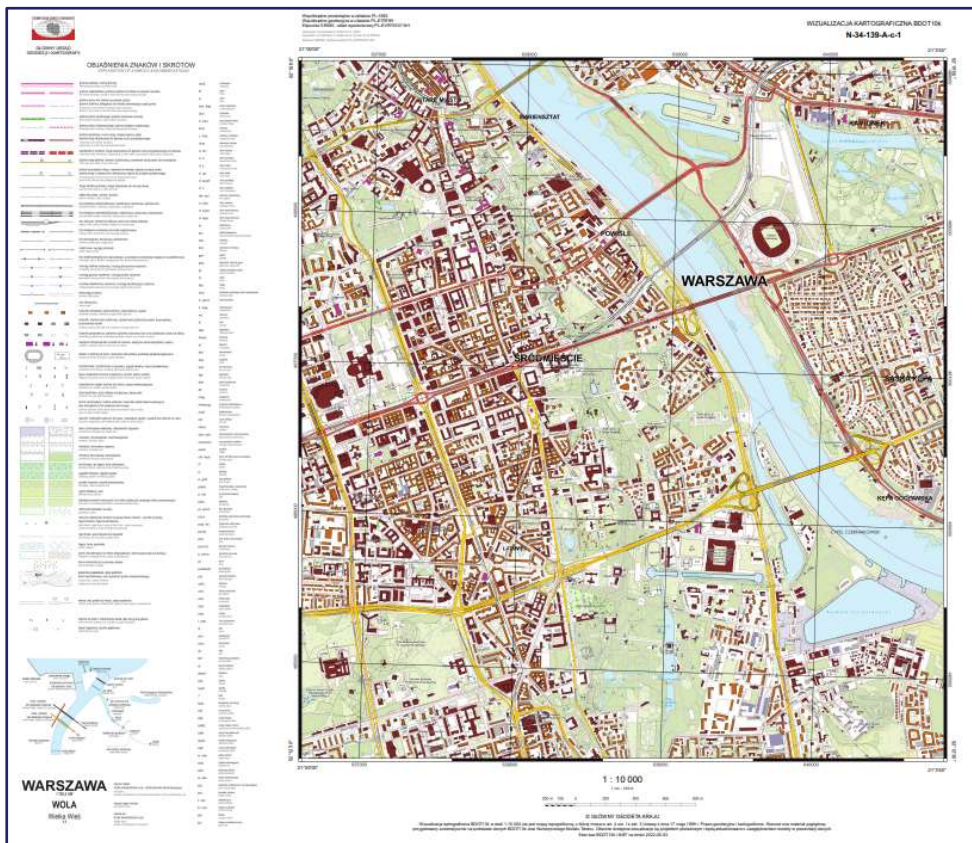




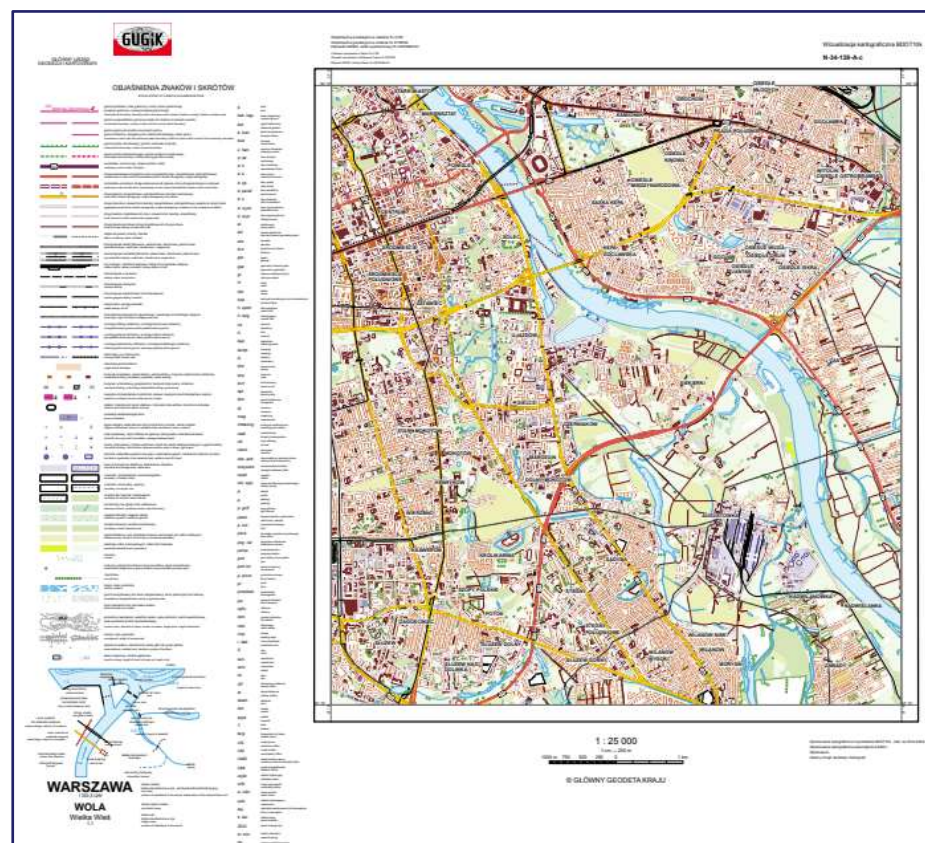
Cartographic visualisation 1: 25 000



AUTOMATIC PRODUCTION – CARTOGRAPHIC VISUALISATION



1:10 000



1:25 000

HOW TO DOWNLOAD?

geoportal.gov.pl

The screenshot shows the geoportal.gov.pl interface with a map of Poland. A pop-up window displays details for 'Arkusze - M-34-27-B-d-3'. The 'Pobierz plik' section is highlighted with a red box and a '2', containing links for 'Mapa w formacie PDF' and 'Pobierz plik'. The 'Map contents' panel on the right is also highlighted with a red box and a '1', showing the selected layer 'Wizualizacja kartograficzna BDOT10k'. A '3' is placed near the top-left navigation icons.

THANK YOU !

- Ph.D. Anna Bober, anna.bober@gugik.gov.pl
 - Director of Geodesy, Cartography and GIS Department
 - Head Office of Geodesy and Cartography