



XXVII FIG CONGRESS

11-15 SEPTEMBER 2022
Warsaw, Poland

*Volunteering
for the future –
Geospatial excellence
for a better living*

Newcomers session

Welcome to FIG Working Week 2022

ORGANISED BY



PLATINUM SPONSORS



FIG Vice President Diane Dumashie

Good morning & Welcome

Introduction

- You and Your colleagues
- Your name
- Your professional discipline, and
- How far have you travelled
- A short story about yourself

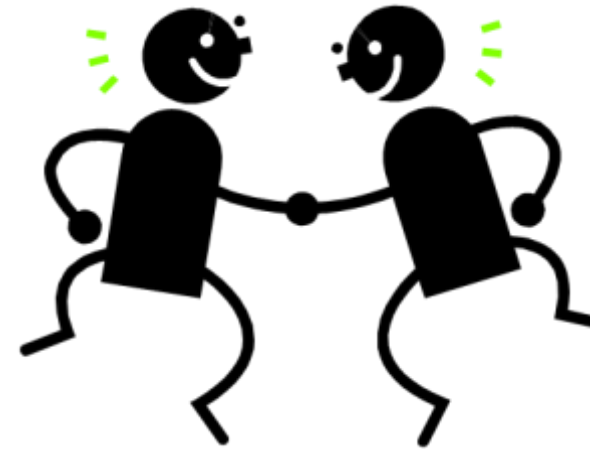


FIG- WHO, WHAT AND WHERE

- Introductions
- FIG with International reach
- Getting the most out of Your working week
- Networking, &
- Meeting up

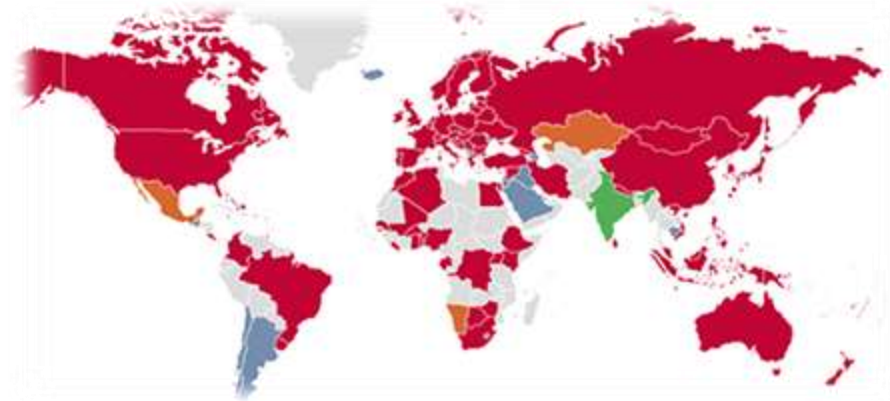
FIG with International reach

- Who
- What
- How



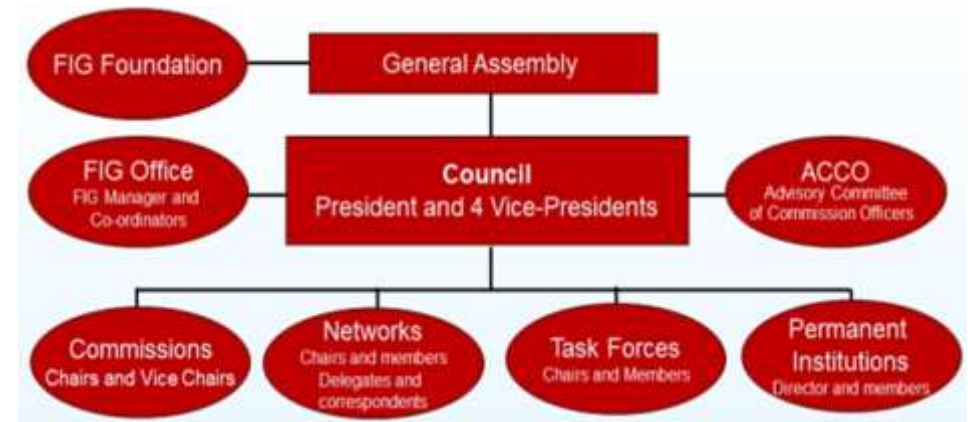
Who: International Federation of Surveyors

- FIG:
 - Members organisation,
 - Comprising national associations, academics, and corporate members
 - Drawing from over 120 countries



What: Global Member Organisation

- General Assembly – oversight and voting
- Council: President and 4 VP's over a 4 year term (2022- 26)
- Other administrative bodies
 - 3 Networks: Young Surveyors, Regional Capacity development (Africa + Asia Pacific), Standards.
 - 10 Commissions (ACCO)



How: Contribution

Professional Development

- Global forum for professional discussions and interactions
- Conferences, symposia, commission working groups,

Institutional Development

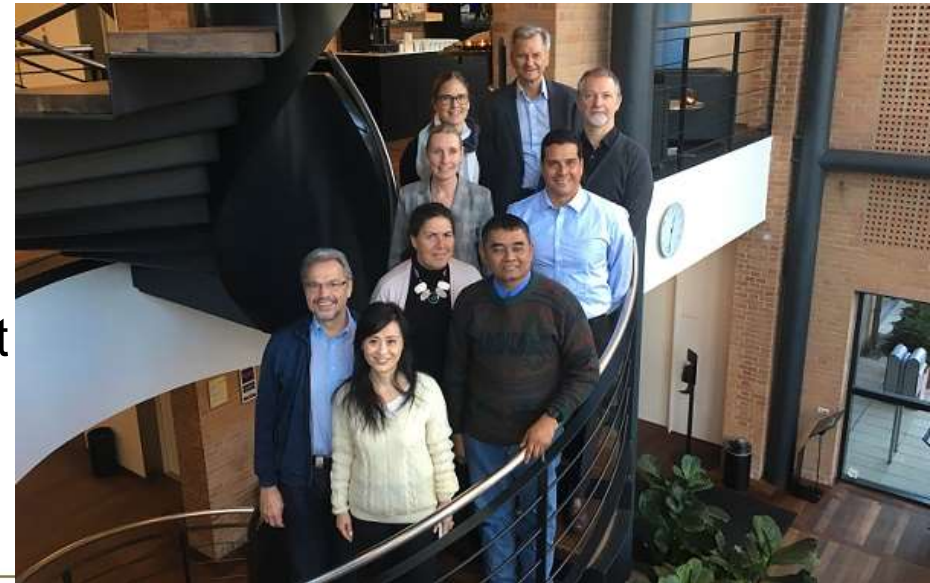
- Institutional support for educational and professional development at national and international level

Global Development

- Cooperation with international NGO's such as the UN agencies, World Bank, and sister organisations
- - Joint activities and common policy-making to reduce poverty and enforce sustainable development

Activity and outputs with Commissions

1. Professional standards & practice
2. Professional Education
3. Spatial information management
4. Hydrography
5. Positioning and measurement
6. Engineering surveys
7. Land management & cadastre
8. Spatial planning and economic development
9. Valuation and real estate
10. Construction economics



Getting the most out of the FIG Working Week

Louise Friis-Hansen
FIG Director

What is a FIG Working Week

- Programme book
- Technical Sessions - commissions
- Special Sessions
- Sessions with strategic partners (WB/FAO/GLTN +)
- FIG Platinum member sessions
- Meetings
- Commission Meetings – during lunch
- fig.net/fig2022/technical_program.htm
- fig.net/app



Platinum Sponsors



ORDER ID: 69478

Monday, 12 September						Monday, 12 September															
Ballroom "Trimble"		Ballroom "ESRI"		Walnut/Acacia		Willow		Lime/Maple		Sycamore/Magnolia/Cedar		Poplar/Alder		Rowan		Pine/Hazel		Sequoia			
08:00–08:45						Newcomers Session						08:00–08:45									
09:00–10:00						KEYNOTE SESSION 1: Geospatial Excellence for a Better Living – Digitalisation and Modern Surveying and Cadastre in a Post-Covid19 Era – Ballroom "Trimble"						09:00–10:00									
10:00–11:00						KEYNOTE SESSION 2: Urban Rural Partnership – Ballroom "Trimble"						10:00–11:00									
11:00–11:30						Morning Break – Exhibition Area						11:00–11:30									
11:30–13:00		TS01A: Mines and Geohazards – Geospatial Techniques for Monitoring and Assessment – C: 6		TS01B: Urban-Rural Land Linkages – C: 8		TS01C: Providing a Reference Frame for Geospatial Products – C: 5		TS01D: Multidisciplinary Applications of Hydrography – C: 4		TS01E: The Third Dimension of Geospatial Information – C: 3		TS01F: Professional Standards, Practice Development and Life-long Learning – C: 1, 2 & 7		TS01G: Innovations in Cadastral Data Capture and Analysis – C: 7		CLGE ex-board Meeting 1		Sponsor Presentation: LEICA GEOSYSTEMS		Sponsor Presentation: TERRASOLID LTD.	
13:00–14:30						Lunch Break – Restaurant						13:00–14:30									
14:30–16:00		TS02A: Framework for Effective Land Administration – NMCA Good Practices and Further Developments – C: EuroSDR & FIG		TS02B: Professional Standards and Practice – C: 1		TS02C: Photogrammetry and UAV in Engineering Surveying – C: 6		TS02D: Definition and Approaches of Transparency – C: 9		TS02E: FIG Platinum Corporate Member Session – Leica Geosystems		TS02F: Young Surveyors and the Future of Volunteering – C: YS		TS02G: GIS for 3D Urban Planning, Construction and Valuation – C: 3, 8 & 9		CLGE ex-board Meeting 2		Sponsor Presentation: RIEGL			
16:00–16:30						Afternoon Break – Exhibition Area						16:00–16:30									
16:30–18:00		TS03A: Blended Learning for Surveying Education – C: 2		TS03B: Coordination of Global Capacity Development – C: 2, 5 & CDN		TS03C: Addressing Sustainability in Spatial Planning – Planning Efforts in Rural and Urban Areas – C: 8		TS03D: Valuation of Unregistered Land Manual – C: 9 & GLTN		TS03E: Financing and Performance Trends in Land Administration – C: 7		TS03F: FIG Member Associations Forum		TS03G: Laser Scanning in Engineering Surveying – C: 6		CLGE ex-board Meeting 3		Sponsor Presentation: FARD TECHNOLOGIES			
Tuesday, 13 September						Tuesday, 13 September															
09:00–11:00		TS04A: Challenges and Sustainable Solutions in Hydrography for Better Living – C: 4		TS04B: Policy and Legal Innovations in Land Administration – C: 7		TS04C: Open Geospatial Data and Crowdsourcing – C: 3		TS04D: Combined Techniques in Engineering Surveying – C: 6		TS04E: Blended Learning in Practice – C: 2		TS04F: FIG Director Generals Forum		TS04G: Efficient GNSS Integration with Other Sensors – C: 5		Regional Bodies Meeting		Sponsor Presentation: AGEAGLE		09:00–11:00	
11:00–11:30						Morning Break – Exhibition Area						11:00–11:30									
11:30–13:00		TS05A: Building Back Better Informal Settlements in the UNECE Region		TS05B: Land Tenure Reform System for Mars – C: YS & VCSP		TS05C: Traditional and Modern Techniques in Engineering Surveys – C: 6		TS05D: History Session – C: History		TS05E: FIG Platinum Corporate Member Session – ESRI		TS05F: FIG Standards Meeting		TS05G: Climate Smart Planning with GIS – C: 3 & 8		GLTN Partners Meeting		Sponsor Presentation: OPEGEKA		Sponsor Presentation: GEOSLAM	
13:00–14:30						Lunch Break – Restaurant						13:00–14:30									
14:30–15:30		TS06A: Book Launch – Geospatial Data in the 2020s – Transformative Power and Pathways to Sustainability – C: 3		TS06B: The FIG Mentoring Programme for Africa – C: YS, ARN		TS06C: Spatial Planning and Affordability of Housing – C: 8 & 9		TS06D: UN-GGIM – An Update and Priorities		TS06E: Global Challenges and the Role of Land Administration Systems – C: 7		TS06F: LADM in the Classroom – Making the Land Administration Domain Model Accessible – C: 7		TS06G: Providing Vertical Control for Hydrographers, Coastal Managers and other Disciplines – C: 5				Sponsor Presentation: SKYSNAP		14:30–15:30	
15:30–16:00						Afternoon Break – Exhibition Area						15:30–16:00									
16:00–17:00						KEYNOTE SESSION 3: Land Governance in support of the 2030 Global Agenda – Ballroom "Trimble"						16:00–17:00									
17:00–18:00						KEYNOTE SESSION 4: The Generational Landscape of Our Profession: Looking to the Future – Ballroom "Trimble"						17:00–18:00									
Wednesday, 14 September						Wednesday, 14 September															
09:00–10:00						KEYNOTE SESSION 5: Mapping the Plastic – Ballroom "Trimble"						09:00–10:00									
10:00–11:00						KEYNOTE SESSION 6: Technology and Visualisation for the Future – Ballroom "Trimble"						10:00–11:00									
11:00–11:30						Morning Break – Exhibition Area						11:00–11:30									
11:30–13:00		TS07A: Land Policy Instruments for Regional Development – C: 8		TS07B: FIG/FAO/UNECE Joint Session: Accelerated Digitalisation and the Future of Land Administration in the UNECE Region and Beyond		TS07C: Geospatial Analytics Use Cases – C: 3		TS07D: The Future of Land Administration: Ideas, Technologies and Processes – C: 7		TS07E: French Session 1		TS07F: Innovation in Curriculum – C: 2		TS07G: FIG Platinum Corporate Member Session – Trimble		Open Meeting: STAND FOR HER LAND		Sponsor Presentation: DJI ENTERPRISE		11:30–13:00	
13:00–14:30						Lunch Break – Restaurant						13:00–14:30									
14:30–16:00		TS08A: Real Estate Data goes Geodata – C: 3 & 9		TS08B: FIG/FAO Joint Session: Leveraging the Potential of Multi-Purpose Land Consolidation in Eastern Europe		TS08C: Ubiquitous GNSS – C: 5		TS08D: Geospatial Data in the 2020s – C: 3		TS08E: French Session 2		TS08F: FIG & the SDGs – Making the World a Better Place with Your Skills – C: TF-SDG		TS08G: Databases, Models and Software for Land Administration – C: 7		IPMS Regional Meeting		FIG Corporate Member/Congress Sponsor Meeting		14:30–16:00	
16:00–16:30						Afternoon Break – Exhibition Area						16:00–16:30									
16:30–18:00		TS09A: Joint FIG/FAO Session: FIG Academic Forum: VGGT and UNCCD COP 14		TS09B: Land Administration and the SDGs – C: 7		TS09C: Land Use Planning and Management Fed by Spatial Analyses – C: 3, 8		TS09D: GLTN and FIG Young Surveyors WSP – Continuing on a Path of Collaboration		TS09E: Laws and Standards – C: 9		TS09F: FIG Presidents Meeting (by invitation only)		TS09G: Construction Economics and Management – C: 10						16:30–18:00	

Social Activities – Network with your fellow attendees

- Welcome reception
- Lunches and Coffee/Tea breaks – use them
- Exhibition
- Technical Tours – still tickets
- Social Tours
- Congress Dinner
- Cultural evening – (2022 combined with welcome)
- Commission Dinners (Wednesday)
- Your own initiative

The Conference does not stop when you return home

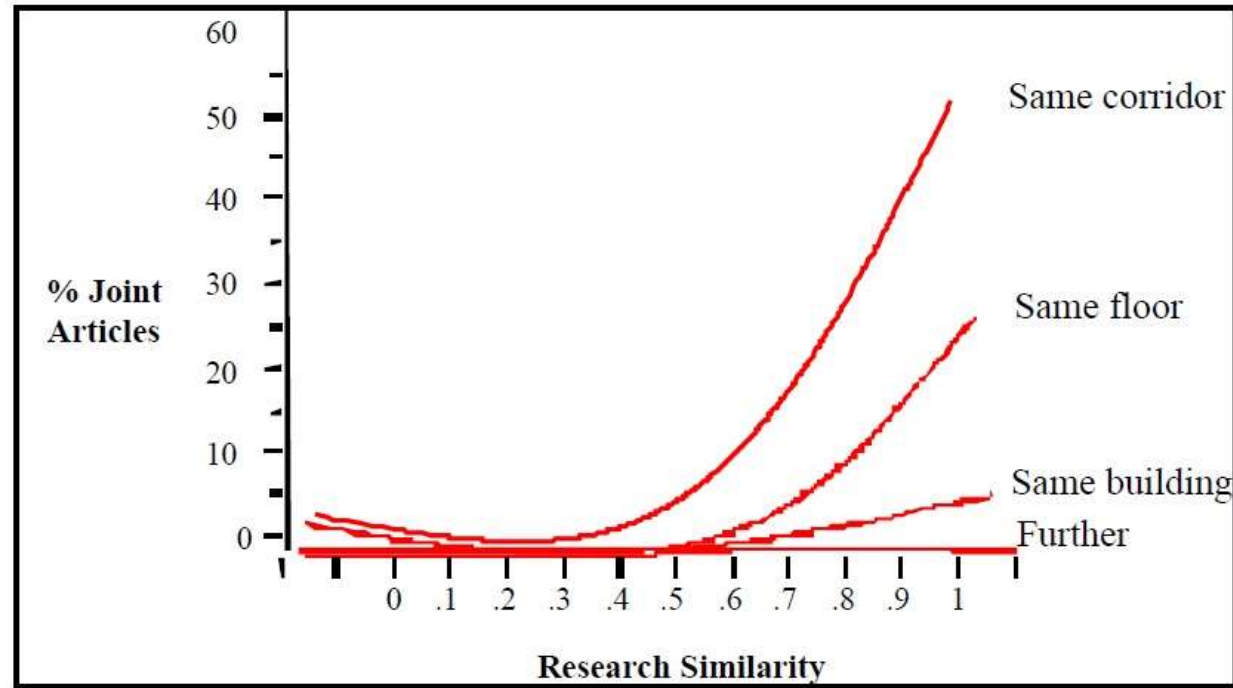
- What output do you aim to bring home
- What can you use in your daily work
- Inspiration and ideas from sessions
- Tell your colleagues what you have learned and what ideas you have
- Your action plan

- Network – during the Working Week
- Network – when you are back home

Plan to come back to new found friends!

2023/ USA, 2024/ Ghana

Why meet for a conference?



Association of research similarity and probability of collaboration at different levels of physical proximity
Understanding The Effects of Proximity, Susan R. Fussell, Robert E. Kraut, Susan E. Brennan, and Jane Siegel

What do you get out of your participation?

Participants who:

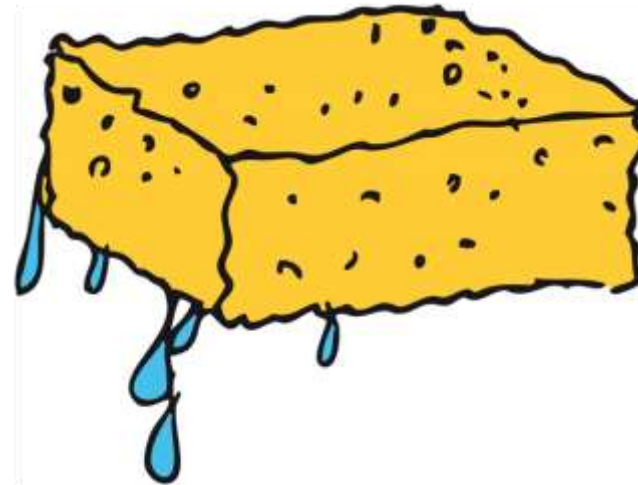
- Are aware that a conference is not only a break
- Have an execution-plan ready



What type are you?

The sponge

(who wants to get everything they can learn and read)



What type are you?

Super Fan

(who wants to meet his/her hero)



What type are you?

Escapologist

(who wants to escape the daily work)



What type are you?

The Perfect Networker
(who wants to meet new colleagues)



Back at home

- Still flying
 - Falling – back to normal
 - Organise your contacts
 - Follow up
 - De-brief with colleagues and manager
-
- Look forward to next years FIG Working Week – the FIG Working Week 2023 in Orlando, USA



WELCOME TO FIG

THANK YOU