

FIG
2018
ISTANBUL

Presented at the FIG Congress 2018
May 6-11, 2018 in Istanbul, Turkey

XXVI FIG CONGRESS

6-11 May 2018, Istanbul

www.fig.net/fig2018

Planning Practicum- Based on Sustainable Development

Haocong(Jerry) Wang

EMBRACING OUR SMART WORLD WHERE THE CONTINENTS CONNECT:
ENHANCING THE GEOSPATIAL MATURITY OF SOCIETIES

Organized by



Main Supporters



Platinum Sponsors





EMBRACING OUR SMART WORLD WHERE THE CONTINENTS CONNECT:
ENHANCING THE GEOSPATIAL MATURITY OF SOCIETIES
6-11 May 2018, Istanbul

Global challenge



Organized by



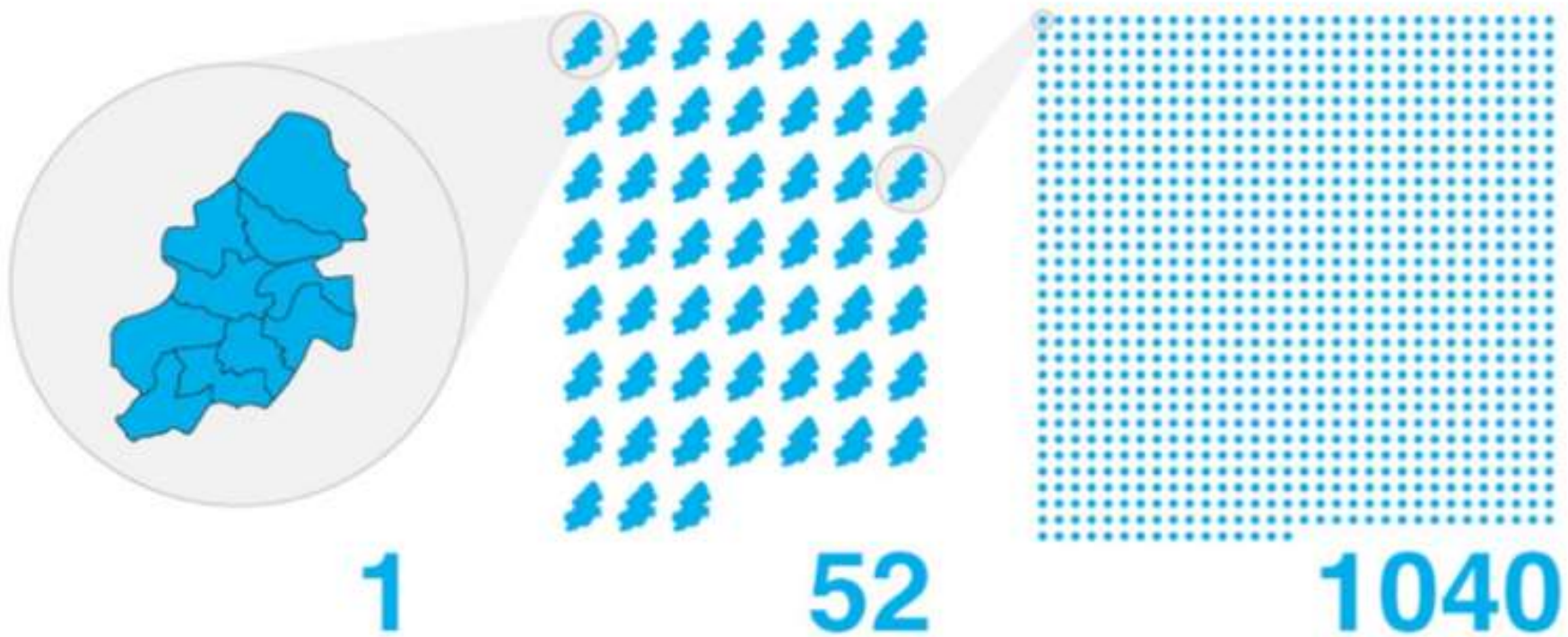


Why Should We Care?

1 Birmingham ...

... every week ...

... for 20 years ...



0 We need to build the equivalent of one Birmingham a week around the globe for the next 20 years if we are to house the growing urban economies and populations.

图片来源:

The Farrell Review, 2013





Types of Sustainable Development

Natural-ecological sustainability

Social

Economic

Science and Technology

Sustainable development is development that meets the needs of the present without compromising the ability of future generations to meet their own needs

Organized by



Main Supporters



Platinum Sponsors





EMBRACING OUR SMART WORLD WHERE THE CONTINENTS CONNECT:
ENHANCING THE GEOSPATIAL MATURITY OF SOCIETIES
6-11 May 2018, Istanbul

 SUSTAINABLE DEVELOPMENT GOALS	1 NO POVERTY 	2 ZERO HUNGER 	3 GOOD HEALTH AND WELL-BEING 	4 QUALITY EDUCATION 	5 GENDER EQUALITY 
6 CLEAN WATER AND SANITATION 	7 AFFORDABLE AND CLEAN ENERGY 	8 DECENT WORK AND ECONOMIC GROWTH 	9 INDUSTRY, INNOVATION AND INFRASTRUCTURE 	10 REDUCED INEQUALITIES 	11 SUSTAINABLE CITIES AND COMMUNITIES 
12 RESPONSIBLE CONSUMPTION AND PRODUCTION 	13 CLIMATE ACTION 	14 LIFE BELOW WATER 	15 LIFE ON LAND 	16 PEACE, JUSTICE AND STRONG INSTITUTIONS 	17 PARTNERSHIPS FOR THE GOALS 

Organized by



Main Supporters



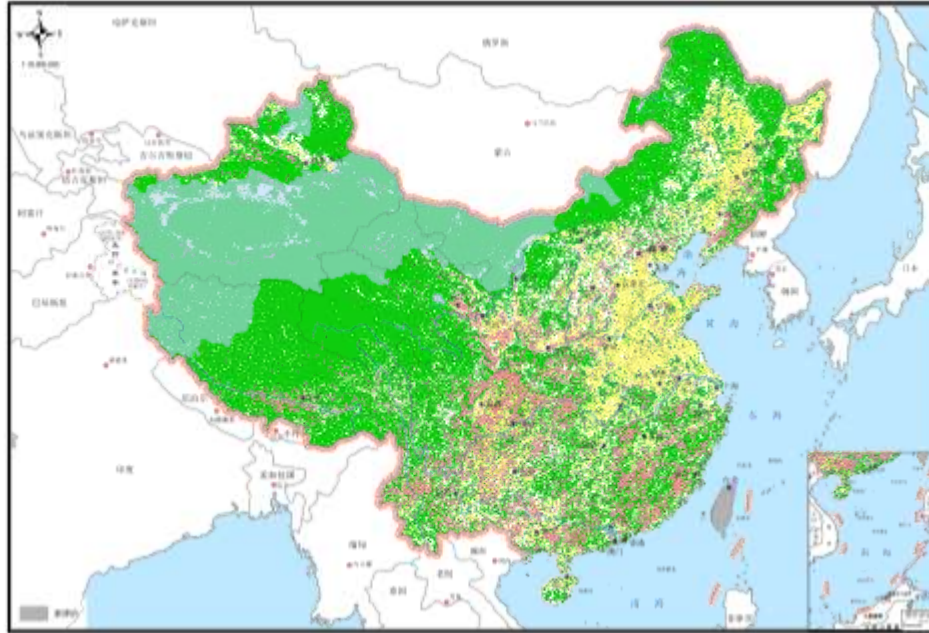
Platinum Sponsors





EMBRACING OUR SMART WORLD WHERE THE CONTINENTS CONNECT:
ENHANCING THE GEOSPATIAL MATURITY OF SOCIETIES
 6-11 May 2018, Istanbul

01.Resource Environmental Bear Capacity as Foundation



Physical Geography Food Security Ecological Safety Geological Environment Safety Water Limitation

Organized by



Main Supporters

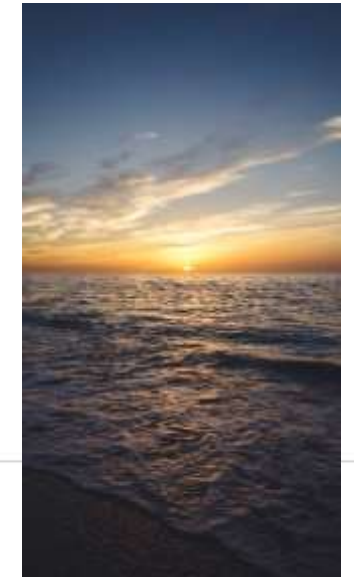


Platinum Sponsors





02. Eco-priority Policy



Should not be disturbed

Organized by



Main Supporters



Platform





Respect



Obey



Protect

Cognition

Consciousness

Operation

Organized by



Main Supporters



Platinum Sponsors

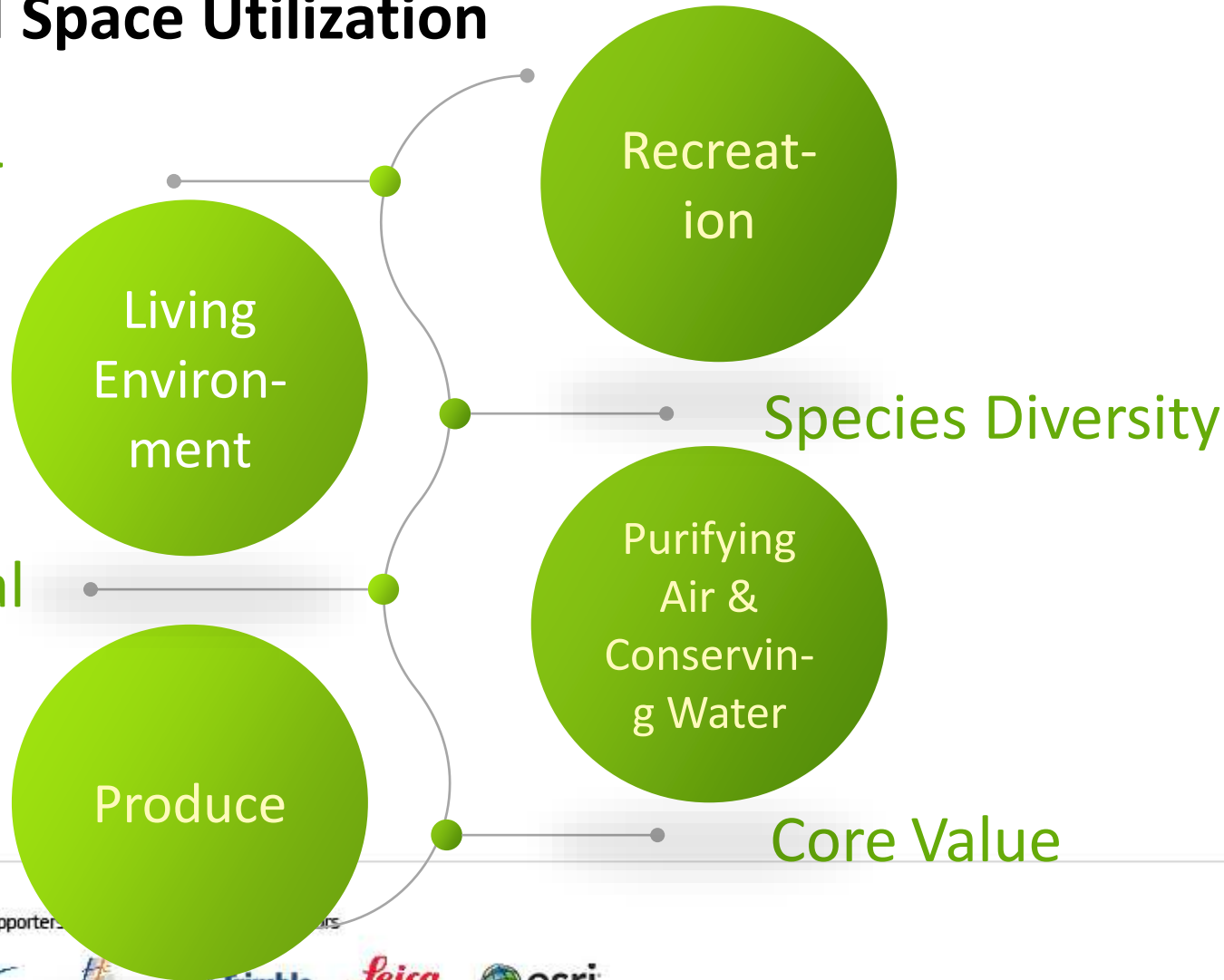




03. Agricultural Space Utilization

Urban Landscape &
Spacing Function

Improving Ecological
Environment



Organized by



Main Supporters





04. People-centered Urbanization

The victory of the city



A sign of Maturity and Civilization



Multiple Choices



Sustainable and Coordinated Development



Small Towns

Organized by



Main Supporters



Platinum Sponsors



Smart Growth



Live



Job



Travel



Service



Recreation

Comfortable House

- a wider variety of housing type
- Mixed-use Layout
- Harmonious Architectural

Near Employment

- The Cultural Space of inheriting History

Low-carbon Travel

- High-density road system
- Proper Walking Network
- Convenient public transport

Convenient Service

- High quality community service
- Walking accessibility

Vibrant Public Space

- Humanistic charm
- Multi-type public space



05.Moderate infrastructure



moderate lead

- Environment & economic development
- Guiding the rational flow of population

Coordinated layout



Organized by

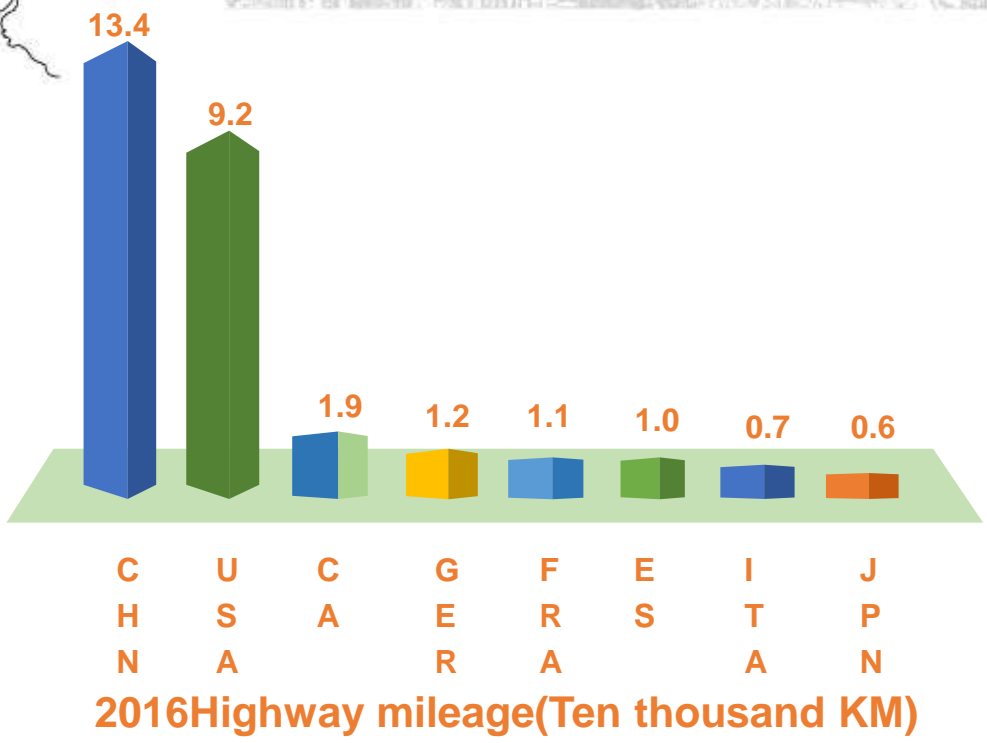


Main Supporters



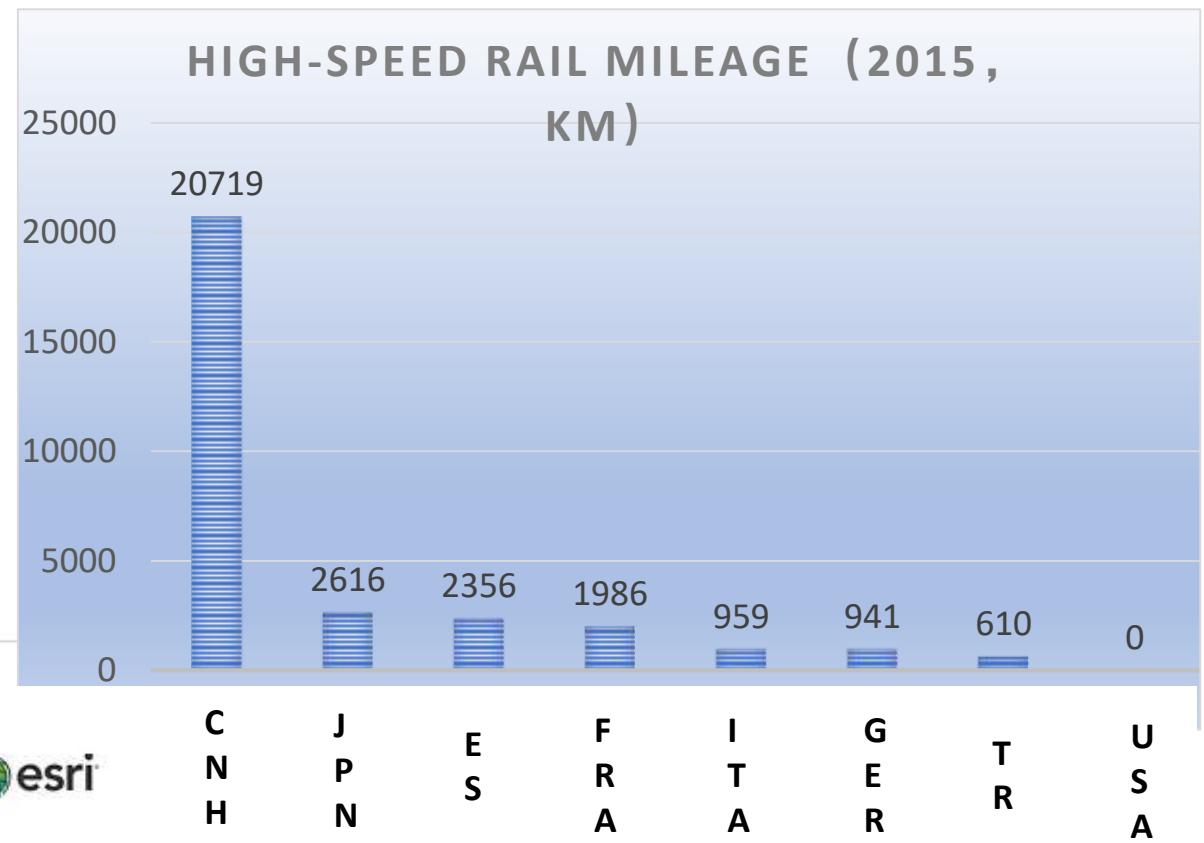
Platinum Sponsors





WHEN TO STOP?

Low ROI Land Subdivision Land Occupation



Organized by



Main Supporters

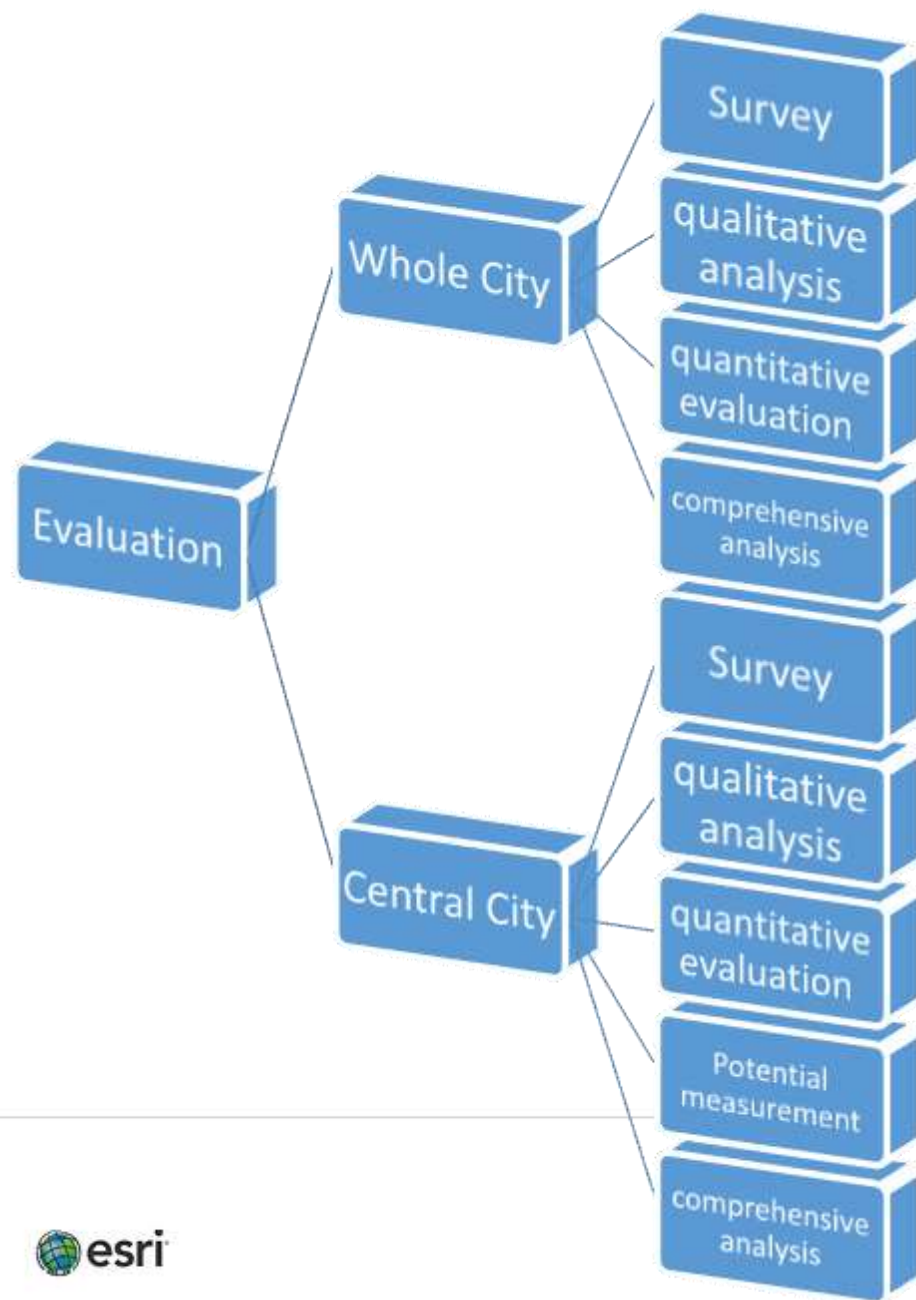
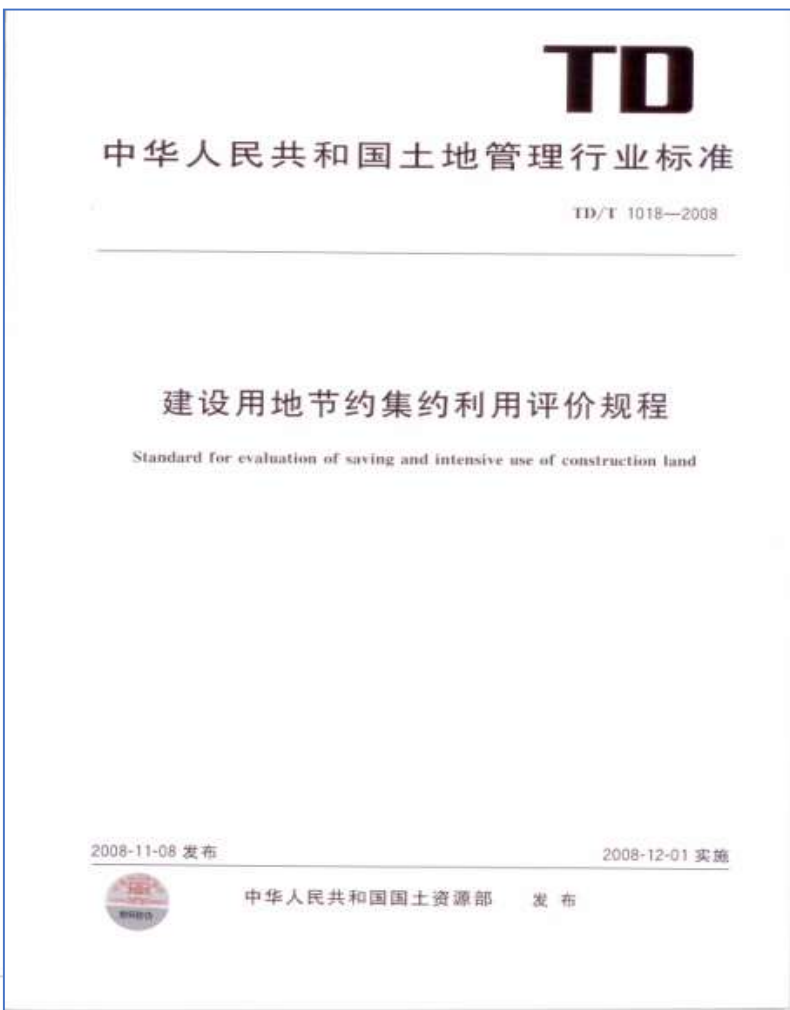


Platinum Sponsors





Evaluation System



Organized by



Main Supporters

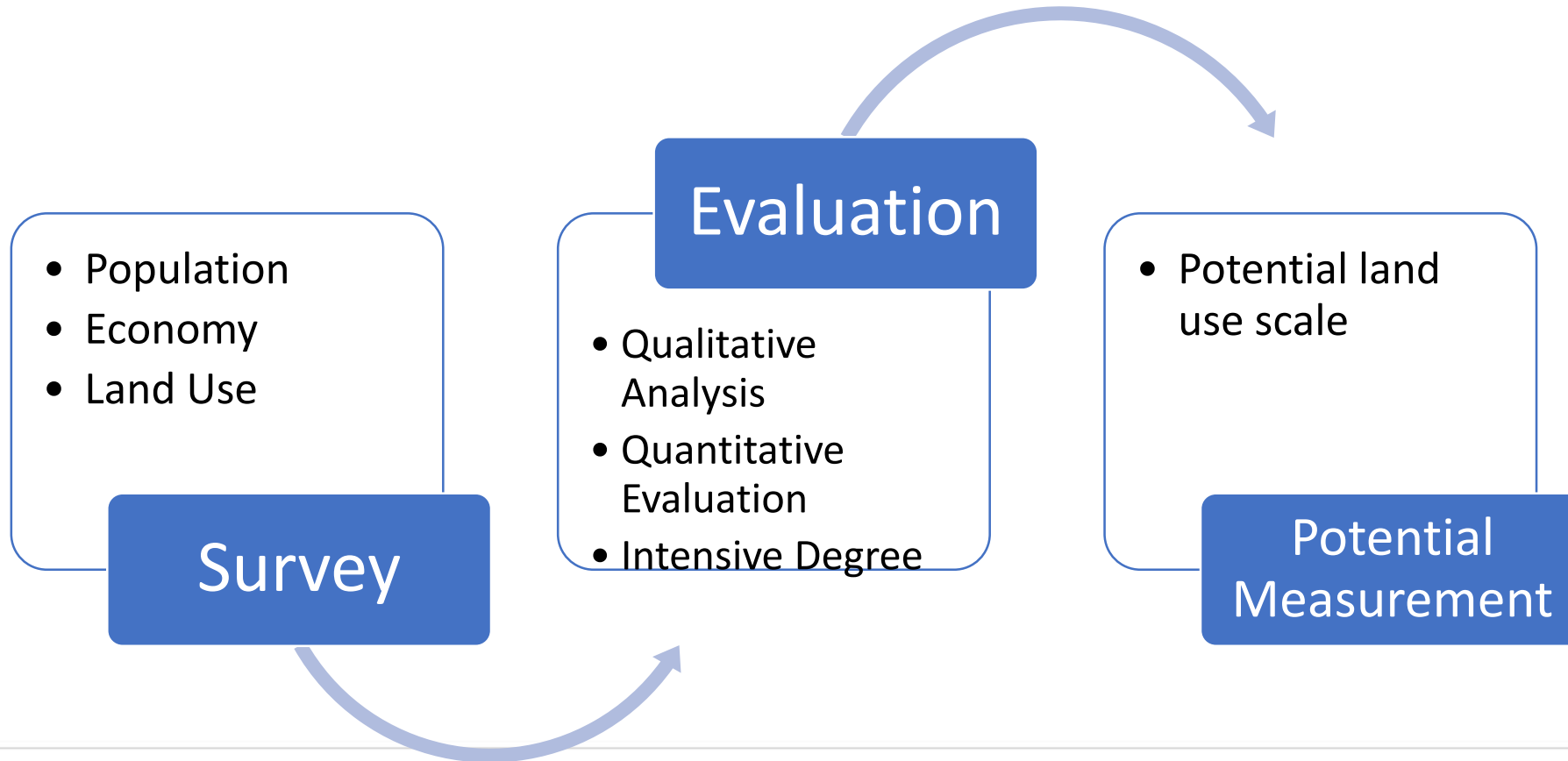


Platinum Sponsors





Evaluation System



Organized by



Main Supporters



Platinum Sponsors





Index	Sub Index	Indicator	Unit	Correlation
利用强度指数 (UII)	人口密度分指数 (PUII)	城乡建设用地人口密度 (PUII1)	人/km ²	Positive Relation
	经济强度分指数 (EUII)	建设用地地均固定资产投资 (EUII1)	万元/km ²	Positive Relation
		建设用地地均地区生产总值 (EUII2)	万元/km ²	Positive Relation
增长耗地指数(GCI)	人口增长耗地分指数 (PGCI)	单位人口增长消耗新增城乡建设用地量(PGCI1)	m ² /人	Negative Relation
	经济增长耗地分指数 (EGCI)	单位地区生产总值耗地下降率(EGCI1)	%	Positive Relation
		单位地区生产总值增长消耗新增建设用地量(EGCI2)	m ² /万元	Negative Relation
		单位固定资产投资消耗新增建设用地量(EGCI3)	m ² /万元	Negative Relation
用地弹性指数(EI)	人口用地弹性分指数 (PEI)	人口与城乡建设用地增长弹性系数 (PEI1)		Positive Relation
	经济用地弹性分指数 (EEI)	地区生产总值与建设用地增长弹性系数 (EEI1)		Positive Relation
管理绩效指数 (API)	城市用地管理绩效分指数 (ULAPI)	城市存量土地供应比率 (ULAPI1)	%	Positive Relation
		城市批次土地供应比率 (ULAPI2)	%	Positive Relation





Zhejiang University National Science Park

Land Area: 28 hectares
Building Area: 200 thousand square meters
Plot Ratio: 0.71

Idle Land: 8.65 hectares
Plot Ratio: 2.50
Increased Building Area: 216 thousand square meters
Economic Value: 2.8 billions



Organized by



Main Supporters



Platinum Sponsors





Planners' Duties

The Chartered Object of the Royal Town Planning Institute is to advance the science and art of town planning **for the benefit of the public**, shall act with competence, honesty and integrity;

shall fearlessly and impartially exercise their independent professional judgement to the best of their skill and understanding

- Code of Professional Conduct, The Royal Town Planning Institute

Organized by



Main Supporters



Platinum Sponsors





EMBRACING OUR SMART WORLD WHERE THE CONTINENTS CONNECT:
ENHANCING THE GEOSPATIAL MATURITY OF SOCIETIES
6-11 May 2018, Istanbul

Thank You

Haocong(Jerry) Wang
CLSPI
13701080707
jerry_wanghaocong@hotmail.com

Organized by



Main Supporters



Platinum Sponsors

