

FIG
2018
ISTANBUL

Presented at the FIG Congress 2018
May 6-11, 2018 in Istanbul, Turkey

XXVI FIG CONGRESS

8-11 May 2018, İstanbul

Challenges in technology, society and policy - how they influence Cadastre and Land Management

Gyula IVÁN
Government Office of the Capital City, Budapest

EMBRACING OUR SMART WORLD WHERE THE CONTINENTS CONNECT:
ENHANCING THE GEOSPATIAL MATURITY OF SOCIETIES

Organized by



Main Supporters



Platinum Sponsors





EMBRACING OUR SMART WORLD WHERE THE CONTINENTS CONNECT:
ENHANCING THE GEOSPATIAL MATURITY OF SOCIETIES
6-11 May 2018, Istanbul

Openness



**Open World
Data Sharing
Information Sharing
Everyone can be
informed of anything**

Organized by



Main Supporters



Platinum Sponsors

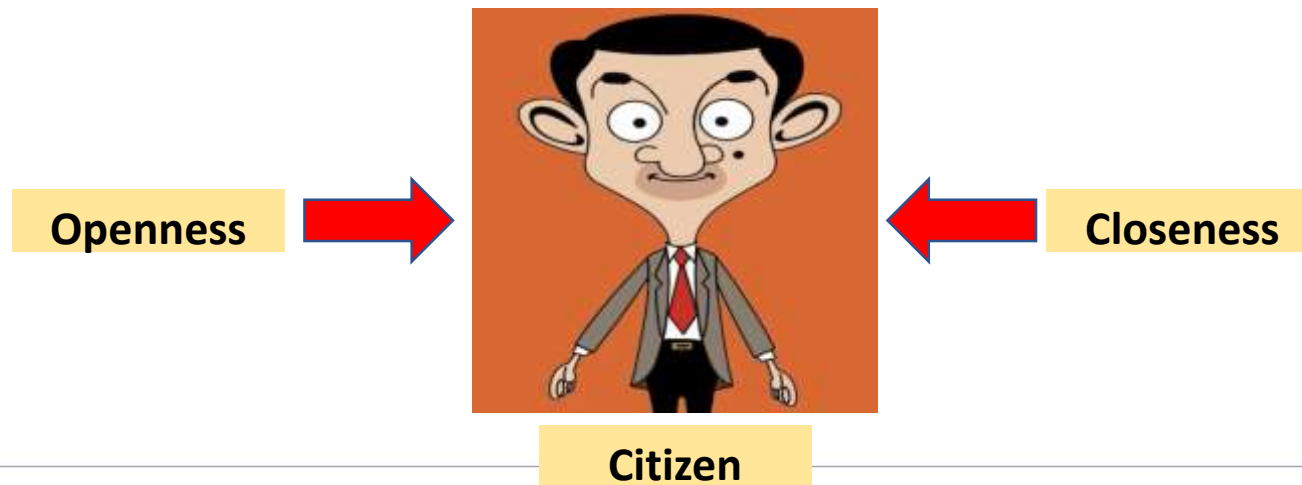




Globalism and Local Policy

„Accelerated globalism kindles nationalist emotions, which are not compatible with the laws of liberal market economy. Political leaders are not able to resolve this contradiction.”

(Nick Wilkinson, Former DA-Notice Secretary UK, 2017)



Organized by



Main Supporters

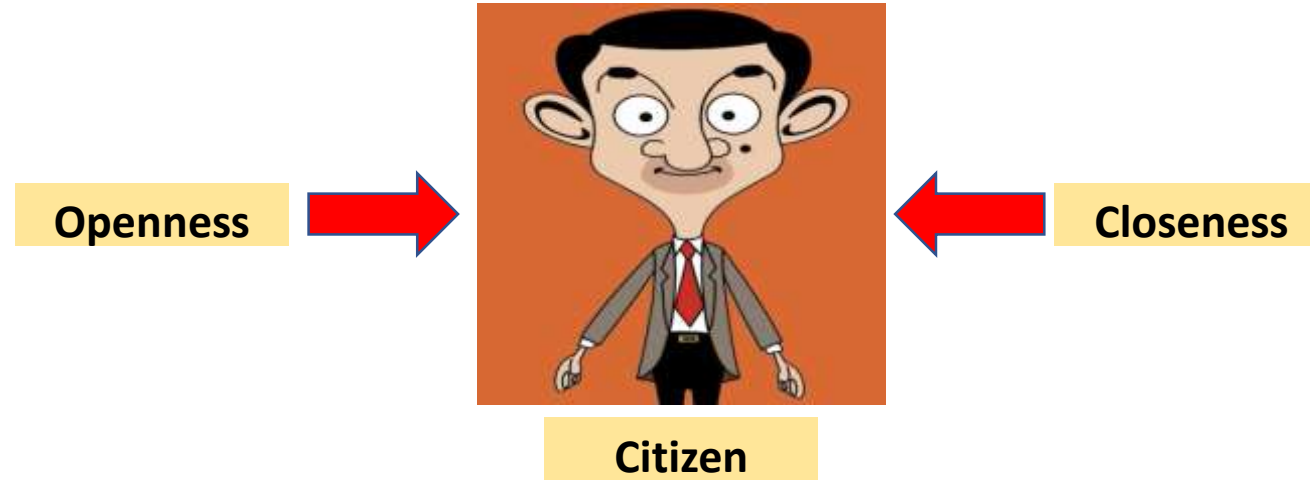


Platinum Sponsors





EMBRACING OUR SMART WORLD WHERE THE CONTINENTS CONNECT:
ENHANCING THE GEOSPATIAL MATURITY OF SOCIETIES
6-11 May 2018, Istanbul



What the Citizen needs?
Safety
&
Peace

Organized by

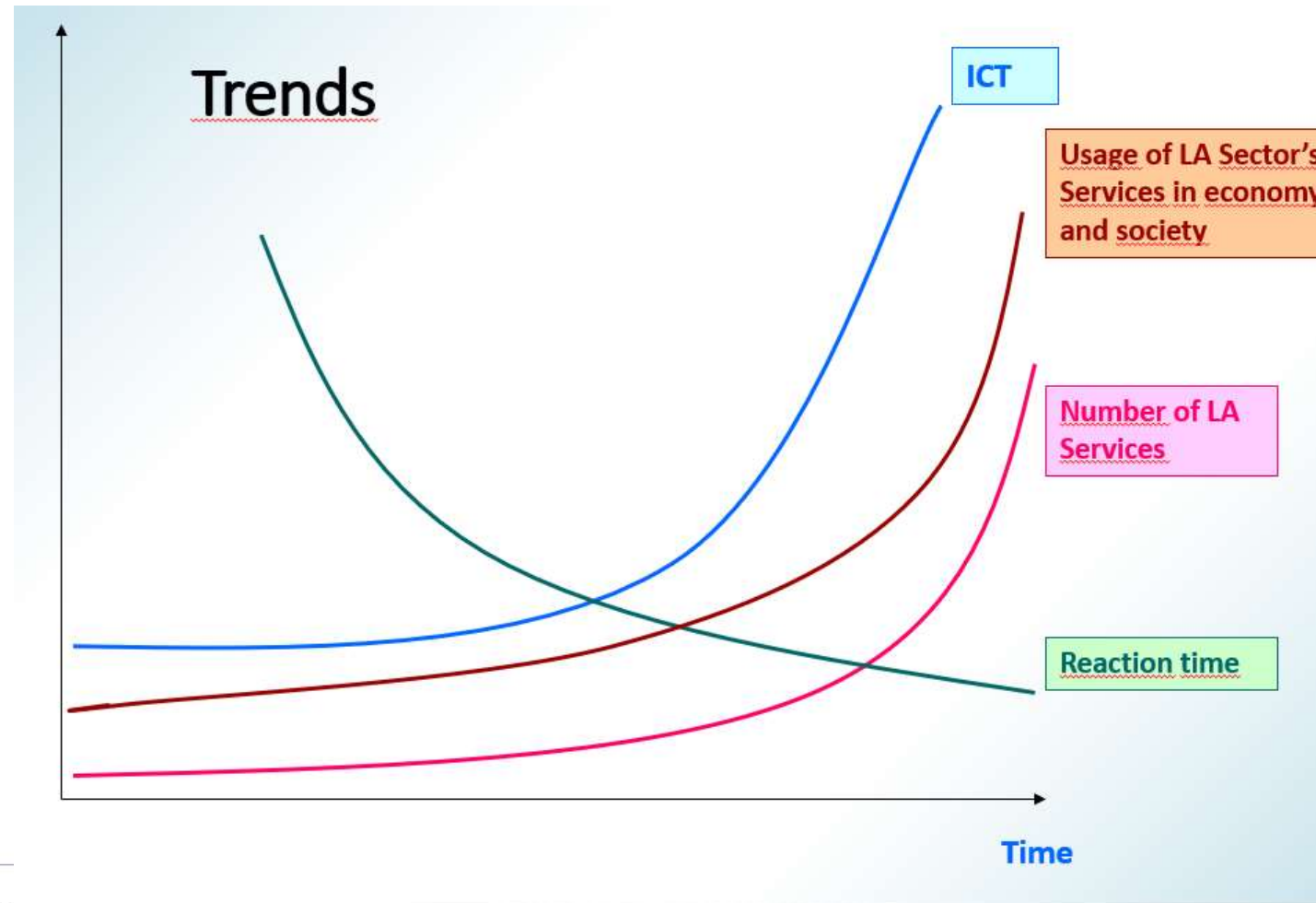


Main Supporters



Platinum Sponsors





Organized by



Main Supporters



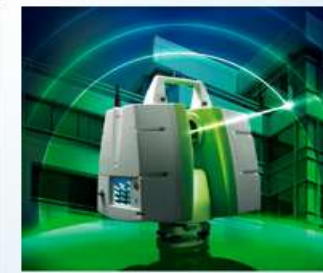
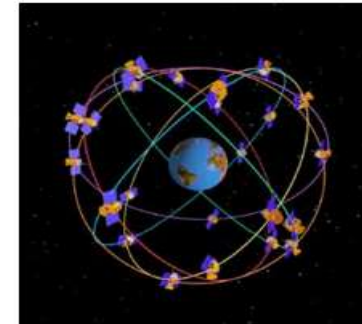
Platinum Sponsors





Technological challenges I.

- New sensors, instruments (UAV, LIDAR, Indoor positioning)
- **Remote Sensing**
- Positioning instead of field measurements
- Smart devices
- Crowdsourcing (FIG Comm. 7. WG 7.3)
- Real-time, change mapping



Organized by



Main Supporters



Platinum Sponsors



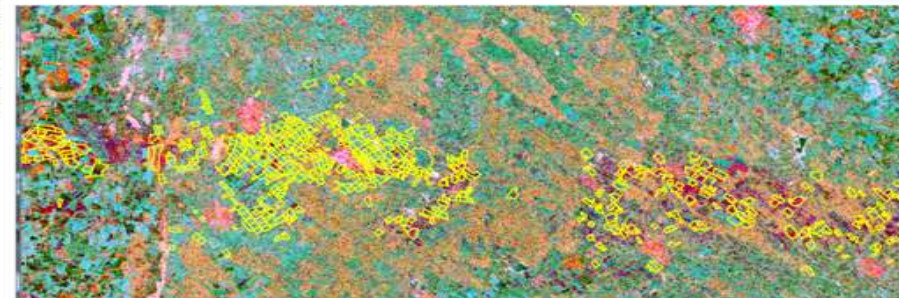


Mixed use of polymetric radar and optical satellite images

Ordered and disordered „grating”.
Different effect on polarized waves.



Hailstorm damages



LPIS blocks of claims of damages and damages detected by the analysis of radar satellite images are coincided well
Analysis were carried out within 10 days after the storm (including satellite image purchasing)

Organized by



Main Supporters



Platinum Sponsors





LADM – Land Administration Domain Model

A common LA „language” all around the world

- The most important result in LA in the last decade
- Conceptual model for designing LA systems
- Interface for exchanging information and data between LA systems
- New LADM expansion module for Land Valuation

Organized by



Main Supporters



Platinum Sponsors





FINTECH in LA

- **Blockchain ??**
 - High energy requirements
 - Stable (looks like)
 - Private or Public?
 - Other financial techniques (e.g Hashgraph, less energy, faster transactions, mathematically better than blockchain)
 - Scaling (blockchain: 4-7 transactions/sec (comp. with VISA etc.)

Organized by



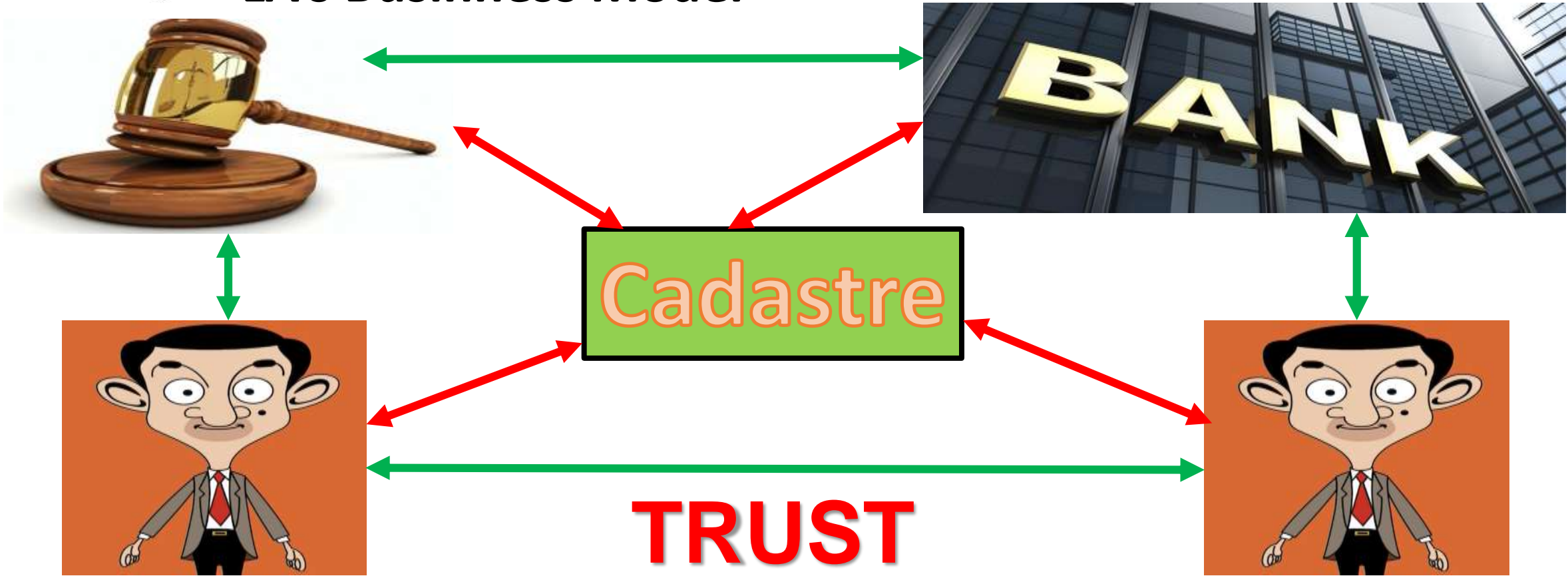
Main Supporters



Platinum Sponsors



LA's Business Model



Organized by



Main Supporters



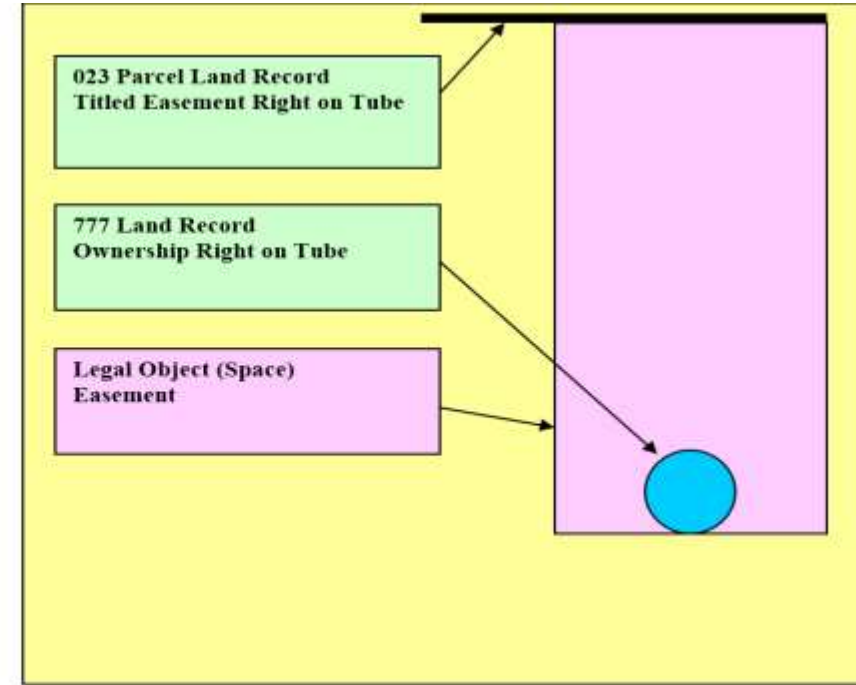
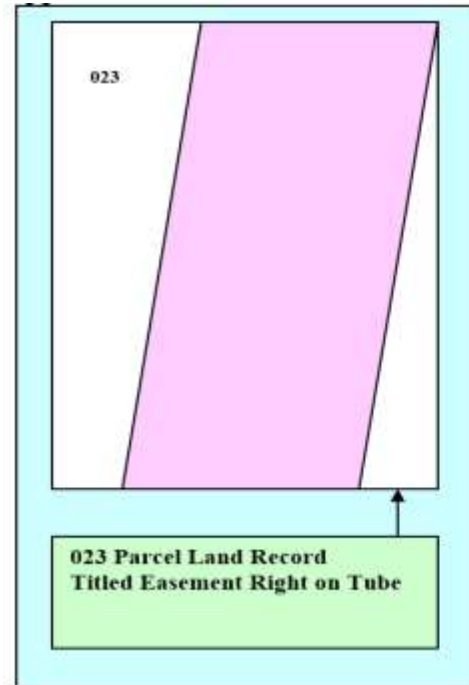
Platinum Sponsors



Civil Code of Hungary: "Ownership right on a real-property extends to the air-space above and to the subsurface below it until utilization is possible"



Ownership



Is there any legal principle, which allows the automated registration of generated rights (intersection, overlapping legal spaces) ?

Organized by



Main Supporters



Platinum Sponsors



Reasons of Migration (not completely)

- Crisis (Insecurity)
- Climate Change (Insecurity) (Comm. 7. WG 7.2)
- Openness
- Insecurity of T



Organized by



Main Supporters



Plati





Migration (from hosting countries POV)

- **Land Issues**

- Setting issues
- New forms of Tenure ? (Temporary, Conditional)
- Land Market Issues
- Land Valuation
- Land Development

- **Economic issues**

- Does it solve Labor problems?
- Does it solve Demographic problems?
- What does it cost, or what is the balance?

- **Emotional issues**



Organized by



Main Supporters



Platinum Sponsors





Conclusion

EMBRACING OUR SMART WORLD WHERE THE CONTINENTS CONNECT:
ENHANCING THE GEOSPATIAL MATURITY OF SOCIETIES
6-11 May 2018, Istanbul



Organized by



Main Supporters



Platinum Sponsors





EMBRACING OUR SMART WORLD WHERE THE CONTINENTS CONNECT:
ENHANCING THE GEOSPATIAL MATURITY OF SOCIETIES
6-11 May 2018, İstanbul



THANK YOU VERY MUCH FOR YOUR KIND ATTENTION

Gyula IVÁN

Chief Adviser on Lands

Government Office of the Capital City Budapest

Department of Geodesy, Remote Sensing and Land Offices

Contact: ivan.gyula@bfkh.gov.hu

See you at: <http://ftf@bfkh.gov.hu>

Organized by



Main Supporters



Platinum Sponsors

