



XXVI FIG Congress 2018

6-11 May 2018

ISTANBUL

CHRYSSY POTSIU

EMBRACING OUR SMART WORLD WHERE THE CONTINENTS CONNECT:
ENHANCING THE GEOSPATIAL MATURITY OF SOCIETIES

ORGANISED BY



MAIN SUPPORTERS



PLATINUM SPONSORS





XXVI FIG Congress 2018

6-11 May 2018 ISTANBUL

EMBRACING OUR SMART WORLD WHERE THE CONTINENTS CONNECT:

ENHANCING THE GEOSPATIAL MATURITY OF SOCIETIES

Ensuring our Rapid Response to Change

Ensuring the Surveyor of Tomorrow

THE FIG AGENDA and ACHIEVEMENTS 2015-2018

Prof Chryssy Potsiou, FIG President

*National Technical University of Athens,
Greece*

chryssy.potsiou@gmail.com

ORGANISED BY



MAIN SUPPORTERS



PLATINUM SPONSORS





XXVI FIG Congress 2018

6-11 May 2018 ISTANBUL

EMBRACING OUR SMART WORLD WHERE THE CONTINENTS CONNECT:

ENHANCING THE GEOSPATIAL MATURITY OF SOCIETIES

The globalization of our profession

140 years of FIG



ORGANISED BY



MAIN SUPPORTERS



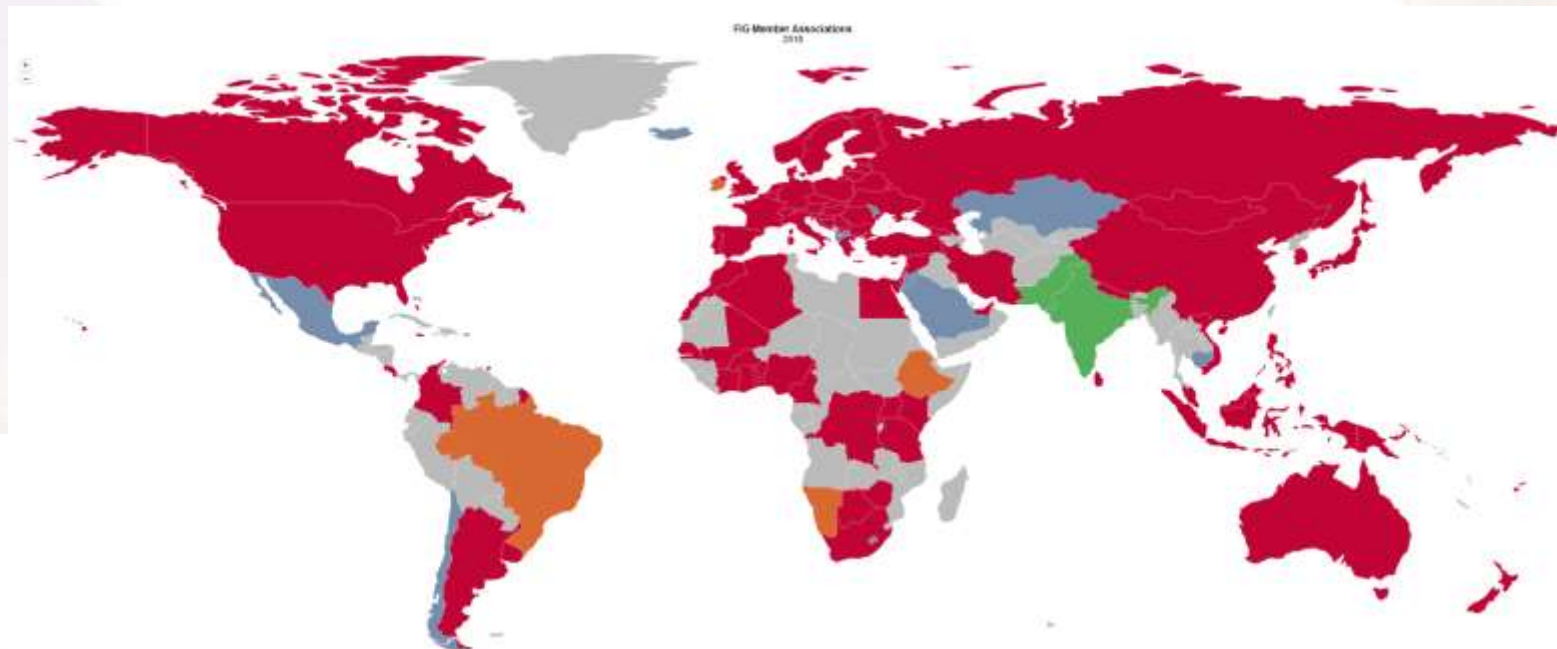
PLATINUM SPONSORS



Participation

More than 250000 surveyors

- Various levels of participation (www.fig.net)
 - ✓ *getting informed, networking*
 - ✓ *teamwork engagement,*
 - ✓ *goal setting, commitment to collective objectives,*
 - ✓ *joint consultation in decision making, at all levels of administration*
 - ✓ *We have the knowledge and the power to make global growth happen*





XXVI FIG Congress 2018

6-11 May 2018 ISTANBUL

EMBRACING OUR SMART WORLD WHERE THE CONTINENTS CONNECT:

ENHANCING THE GEOSPATIAL MATURITY OF SOCIETIES

Our vision

- *The vision of FIG is of a **modern and sustainable surveying profession** in support of society, environment and economy by providing **innovative, reliable and best practice solutions** to our rapidly changing and complex world, acting with integrity and confidence about the usefulness of surveying, and **translating these words into action.***

FIG supports international collaboration:

- *Members*
- *Sister associations, regional bodies,*
- *UN bodies, including FAO and the World Bank, and other professionals,*
in support of governments for the implementation of the ambitious Sustainable Development Agenda 2030

ORGANISED BY



MAIN SUPPORTERS



PLATINUM SPONSORS





XXVI FIG Congress 2018

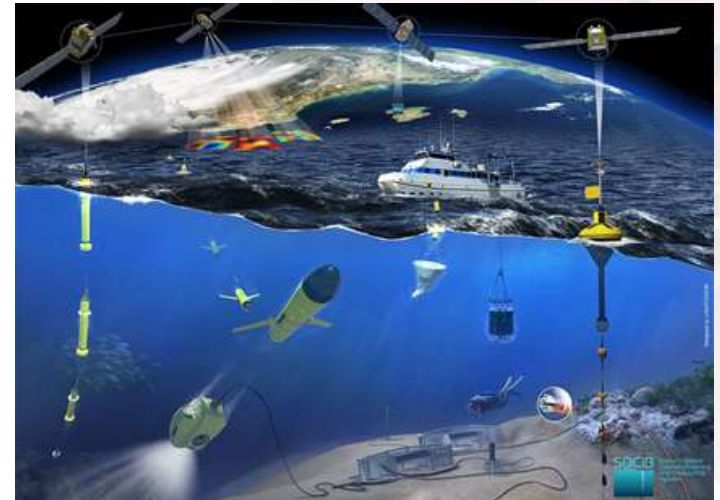
6-11 May 2018 ISTANBUL

EMBRACING OUR SMART WORLD WHERE THE CONTINENTS CONNECT:

ENHANCING THE GEOSPATIAL MATURITY OF SOCIETIES

The value of our evidence-based location information, tools and services

- The geospatial transformation of the society supports
 - Transportation
 - property markets, access to credit mechanisms,
 - construction, city modeling, monitoring
 - fair taxation, disaster recovery, humanitarian support
 - agriculture & water management, ...
- we cannot measure or monitor sustainability and growth without the intelligent use of evidence-based geospatial data
- Technology & Internet has changed the way people work and live
- helps us to “uncover” the missing information and reduce inequalities...
- Development of indicators to monitor the progress



There are many data collection devices we collect: Authoritative and non-authoritative data, good enough for various purposes

ORGANISED BY



MAIN SUPPORTERS



PLATINUM SPONSORS



The Digital Economy - an opportunity for everyone?

The road to digital transformation:

Challenges & opportunities & a lot of unanswered questions...

- ✓ Provide the digital infrastructure- Develop the **platforms**
types of investment? Metropolitan areas? rural areas? benefits?
connectivity & density (people & business)
- ✓ Engage governments: affordable **energy** to enable connectivity,
- ✓ **Informal sector?** regulations, openness & stability to attract investors
- ✓ Enable **digital financial inclusion?** To support sustainable digital and technological entrepreneurship
- ✓ Create the **digital society**: Skills? The **young** generation
- ✓ **Information**: mapping the jobs & training facilities to measure the gaps
job cuts? New jobs? retraining? Skill flow?
- ✓ Education? **on-line training** ? certification?





XXVI FIG Congress 2018

6-11 May 2018 ISTANBUL

EMBRACING OUR SMART WORLD WHERE THE CONTINENTS CONNECT:

ENHANCING THE GEOSPATIAL MATURITY OF SOCIETIES

The Sustainable Development Agenda 2030 was signed by 193 UN state members in 2015

*Surveyors' contribution to the Sustainable Development Agenda 2030:
17 goals(SDGs), 169 targets and 230 indicators.*



**FIG contributes to SDG
1,2, 4, 5, 6, 8, 9,10,11,
13,15,16,17**

ORGANISED BY



MAIN SUPPORTERS



PLATINUM SPONSORS





XXVI FIG Congress 2018

6-11 May 2018 ISTANBUL

EMBRACING OUR SMART WORLD WHERE THE CONTINENTS CONNECT:

ENHANCING THE GEOSPATIAL MATURITY OF SOCIETIES

FIG

The Sustainable Development Agenda 2030 Goal 1 and target 1.4.

- ✓ *SDG1. End poverty in all its forms everywhere.*
- ✓ *1.4. by 2030, countries should ensure that all men and women, in particular the poor and the vulnerable, have equal rights to economic resources, as well as access to basic services, ownership and control over land and other forms of property, inheritance, natural resources, appropriate new technology and financial services, including microfinance.*

DISCUSSION
TENURE SECURITY & SDG Indicator 1.4.2
How do we measure perceptions on land tenure security?
JUNE 20 - July 14, 2017

Organized by:

GLTN
LANDac
LAND ALLIANCE
landportal.info

With the support of:

LEGEND
UKaid
UN HABITAT
ON DMIOVAR NETWORK

ORGANISED BY



MAIN SUPPORTERS



PLATINUM SPONSORS





XXVI FIG Congress 2018

6-11 May 2018 ISTANBUL

EMBRACING OUR SMART WORLD WHERE THE CONTINENTS CONNECT:

ENHANCING THE GEOSPATIAL MATURITY OF SOCIETIES

SDGs: do your homework!

- ✓ Use the **crowd** in a powerful way
- ✓ **"bring the people to the data"** - increase the **usability** of the data
- ✓ secure **property rights for all!** **"informal settlements and the missing data"**,
The great economic divide: 2.5 billion people can register property rights and 5 billion they can't .
Property rights are one of the drivers of **economic growth** as well **economic freedom**
- ✓ policy issues! technical issues! **"make it simple...if you can"**
- ✓ adopt **fit-for-purpose land administration**,
- ✓ **standards** and the **blockchain technology, IoT**
- ✓ the need to **"focus and set priorities"** for **"implementation"**,



ORGANISED BY



MAIN SUPPORTERS



PLATINUM SPONSORS



Surveyors' Role in the Age of Disruption

From the need for providing society with

➤ *reliable, evidence-based, open or low cost data*

for decision-making, toward the need to manage a “tsunami” of geodata

- *extended use of affordable smart devices ; crowdsourcing*
- *5G mobile network technology, 40-60% higher speeds by 2020: massive creation & consumption of data*
- *the Internet of **Me**, Internet of **Things**,*
- *Internet of **Value**, Blockchain & Distributed Ledger Technology (DLT)*
- *Machine learning, cognitive computing for all to improve human decision-making*
- *Autonomous vehicles & drones*





XXVI FIG Congress 2018

6-11 May 2018 ISTANBUL

EMBRACING OUR SMART WORLD WHERE THE CONTINENTS CONNECT:

ENHANCING THE GEOSPATIAL MATURITY OF SOCIETIES

See the opportunity not the complexity

- *“with a 10% increase in high-speed Internet connections, economic growth increases by 1.3%” and leads to “democratization of innovation.”*
- *“in a world where only 40% of the population have access to the internet; we could boost the global GDP by \$1 trillion by connecting another 327 million people.” 5G will enable low-cost, low-power sensors to be embedded in building, appliances, and vehicles. It will be a key enabler of the “internet of things.”*



The World Economic Forum

ORGANISED BY



MAIN SUPPORTERS



PLATINUM SPONSORS





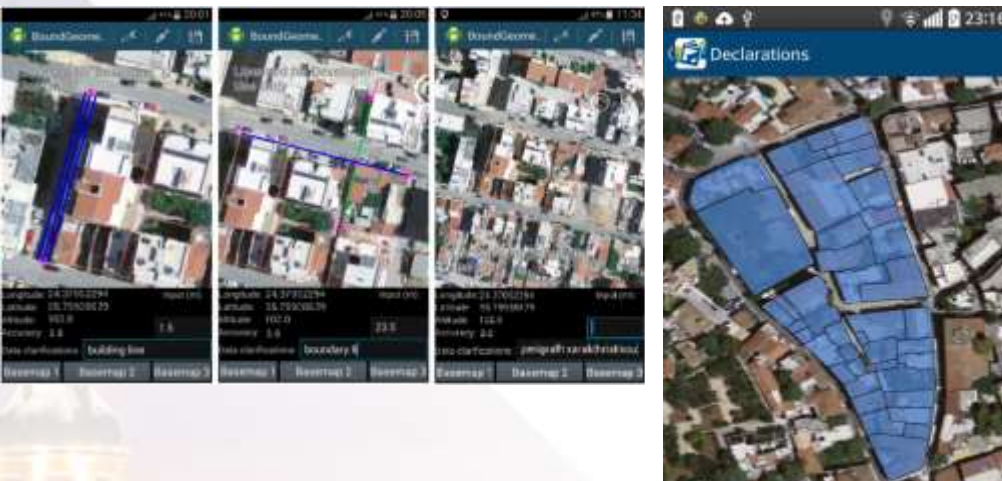
XXVI FIG Congress 2018

6-11 May 2018 ISTANBUL

EMBRACING OUR SMART WORLD WHERE THE CONTINENTS CONNECT:

ENHANCING THE GEOSPATIAL MATURITY OF SOCIETIES

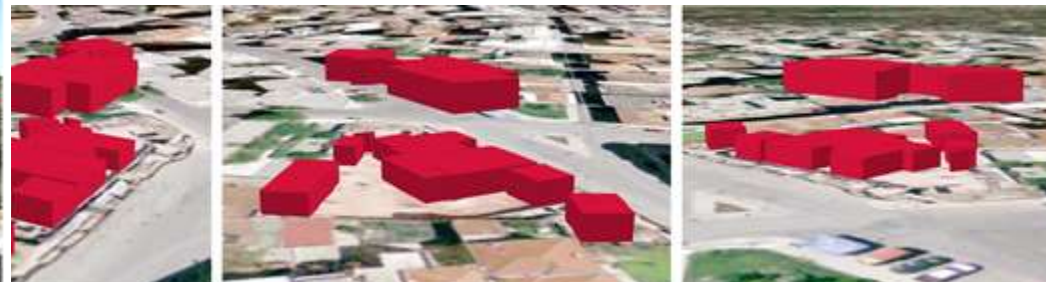
Examples of crowdsourced 2d (2015) and 3d cadastral surveying (2018)



- every person has something of value to contribute; what is the “risk”?
- work may be done **faster** and **cheaper** and with **fewer errors** when validation systems are in place
- **validation is critical** in surveying
- when crowdsourcing is used in surveying, it requires training of volunteers
- easy application for data-collection that is not positionally critical

General Rule

- it may involve the collection of information that is required to be neither positionally precise nor dimensionally accurate, **yet, important enough to achieve the SDGs, and**
- as long as positioning and validation improve the use of VGI information will be extended.



Where is the Data : increase our skills

- ✓ *Have compassion, cooperate-work with others, deal with diversity,*
- ✓ *increase our **digital fluency & computing skills** to ensure **democratization** and make **digitalization a peaceful transition power** for the benefit of all*
- ✓ *In the digitalized world to be capable to infuse codes and algorithms with our **values***



FIG
2018
ISTANBUL

XXVI FIG Congress 2018

6-11 May 2018 ISTANBUL

EMBRACING OUR SMART WORLD WHERE THE CONTINENTS CONNECT:

ENHANCING THE GEOSPATIAL MATURITY OF SOCIETIES

Diversity

- ✓ *benefits All of us,*
- ✓ *means All of us,*
- ✓ *is the key to success for All of us*
- ✓ *If we are not diverse, we are not global!*

ORGANISED BY



MAIN SUPPORTERS



PLATINUM SPONSORS





XXVI FIG Congress 2018

6-11 May 2018 ISTANBUL

EMBRACING OUR SMART WORLD WHERE THE CONTINENTS CONNECT:

ENHANCING THE GEOSPATIAL MATURITY OF SOCIETIES

“global” surveyors

It is the mandate of FIG to create “global” surveyors capable to contribute to the sustainable development agenda.

*Surveyors who will have a “**global education**” that covers all fields of surveying but also who will have an understanding of the “**global challenges**” and who will be capable to develop the profession and work efficiently **everywhere** in order to improve every part of our world, **so that nobody will be left behind.***

*Surveyors all over the world are committed and encouraged to test and **take advantage of the current and emerging technological developments** in order to improve their service to society.*

ORGANISED BY



MAIN SUPPORTERS



PLATINUM SPONSORS





XXVI FIG Congress 2018

6-11 May 2018 ISTANBUL

EMBRACING OUR SMART WORLD WHERE THE CONTINENTS CONNECT:

ENHANCING THE GEOSPATIAL MATURITY OF SOCIETIES

The Global Surveyors' Day 21st of March

A good opportunity for MAs to inform their members about the values and the challenges of globalization and of participation in FIG.



ORGANISED BY



MAIN SUPPORTERS



PLATINUM SPONSORS





XXVI FIG Congress 2018

6-11 May 2018 ISTANBUL

EMBRACING OUR SMART WORLD WHERE THE CONTINENTS CONNECT:

ENHANCING THE GEOSPATIAL MATURITY OF SOCIETIES

Our mission

*Assess & Increase the value of geospatial **data**, our **land tools** and our services for all people to maximize benefits*

Our mission:

- to deliver more benefit, more transparency, more safety, more environmental quality, more growth, more fairness, more education, more gender equality, more efficiency in governance of urban and rural areas....**more freedom***
- This is our contribution to the dream of a future intelligent city, a **happy city**, and a sustainable management of natural resources. Our contribution to the Sustainable Development Agenda 2030.*
- Since 2012 **UN World Happiness Reports** (Happiness: a Holistic Definition of Development) GNH variables: real GDP per capita, social support, healthy life expectancy, freedom to make life choices, generosity, and perceptions of corruption*
- Value of our geospatial data** can be measured: Efficiency gain & Productivity gain*

ORGANISED BY



MAIN SUPPORTERS



PLATINUM SPONSORS



6-11 May 2018 ISTANBUL

EMBRACING OUR SMART WORLD WHERE THE CONTINENTS CONNECT:

ENHANCING THE GEOSPATIAL MATURITY OF SOCIETIES

The YSN

- ✓ *international network with strong regional engagement,*
- ✓ *Several regional events have been held,*
- ✓ *UN-Habitat/GLTN-FIG Young Surveyors Volunteer Community Surveyor Program (VCSP) is a powerful driver for both social impact and professional development. 13 YS participated in 7 GLTN Programs*
- ✓ *STDM Training of Trainers (280 YS from 65 countries trained)*



ORGANISED BY



MAIN SUPPORTERS



PLATINUM SPONSORS



FIG
2018
ISTANBUL

XXVI FIG Congress 2018

6-11 May 2018 ISTANBUL

EMBRACING OUR SMART WORLD WHERE THE CONTINENTS CONNECT:

ENHANCING THE GEOSPATIAL MATURITY OF SOCIETIES

2016: 7000 € **PhD FIG F Scholarship** to Mr. Mukupa (Zambia)

2017:

- ✓ Introduction of **FIG Commission Publication Author Support Grant** of up to 28,000 € over a maximum of four years
 - ✓ 7000 € FIG Foundation **PhD Scholarship** awarded to Mr. Collins Mwangu (Kenya)
 - ✓ **FIG Foundation grant in support of new initiative by UN-Habitat/GLTN** (Global Land Tool Network) and FIG Young Surveyors Network – Volunteer Community Surveyor Program (VCSP)
 - ✓ Creation of informational **videos** on applying for grants
- 74,227 € Grants awarded (2015-2017)
80,140 € Income (2015-2017)

33 Total Grants awarded (2015-2017)

Thanks to Trimble- Charter Foundation Partner and William Marbell for continued generous support since 2002 and sponsor of FIG Foundation dinner since 2010.



Directors

John Hohol,
Mike Barry,
Pengfei Cheng,
Orhan Ercan,
L. Groenendijk,
Daniel Steudler,
Paul van der
Molen

ORGANISED BY



MAIN SUPPORTERS



PLATINUM SPONSORS





XXVI FIG Congress 2018

6-11 May 2018 ISTANBUL

EMBRACING OUR SMART WORLD WHERE THE CONTINENTS CONNECT:

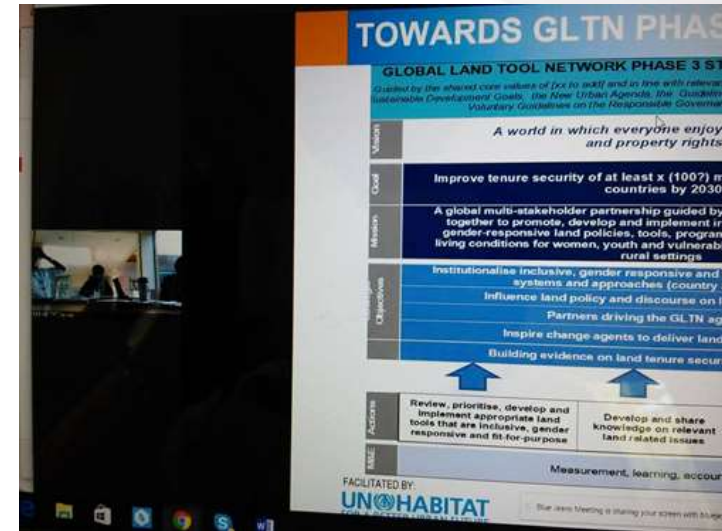
ENHANCING THE GEOSPATIAL MATURITY OF SOCIETIES

Cooperation with GLTN

- ✓ Congress special sessions
- ✓ WB sessions
- ✓ IAB GLTN meeting in 2017, & 2018
- ✓ Publications
- ✓ YSN STDM training, Volunteer Community Surveyor Program VCSProgram
- ✓ ARN FFP workshop
- ✓ FIG Foundation
- ✓ Professional cluster lead

GLTN IAB virtual meeting, 2017

GLTN IAB meeting, 2018



ORGANISED BY



MAIN SUPPORTERS



PLATINUM SPONSORS





XXVI FIG Congress 2018

6-11 May 2018 ISTANBUL

EMBRACING OUR SMART WORLD WHERE THE CONTINENTS CONNECT:

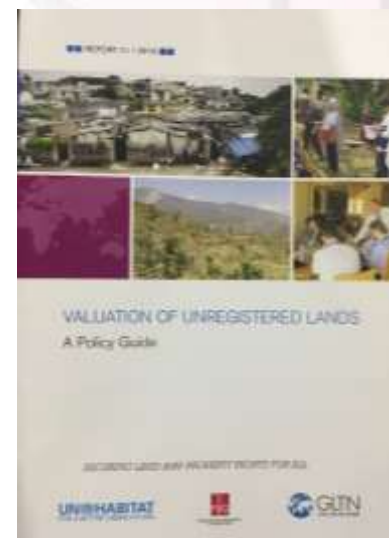
ENHANCING THE GEOSPATIAL MATURITY OF SOCIETIES

FIG Publications 2015-May 2018

in cooperation with GLTN



The Social Tenure Domain Model - A Pro Poor Land Tool in English, Japanese, French, Arabic



ORGANISED BY



MAIN SUPPORTERS



PLATINUM SPONSORS



STANDARDIZATION

Land Administration systems and Implementation

Measuring & managing Property

*The Social Tenure Domain Model - A Pro
Poor Land Tool in
English, Japanese, French, Arabic*

*ILMS, IPMS, ICMS,
develop and implement
international standards for the
measuring of land and property and
enabling global comparison of
construction project costs*

- ✓ *LADM implementation*
- ✓ *LADM II will be developed: valuation, blockchain, 4D*
- ✓ *Operationalization by the Open Geospatial Consortium*
- ✓ *GLTN STDM widely used*
- ✓ *Cadastral template 2.0
56 countries*



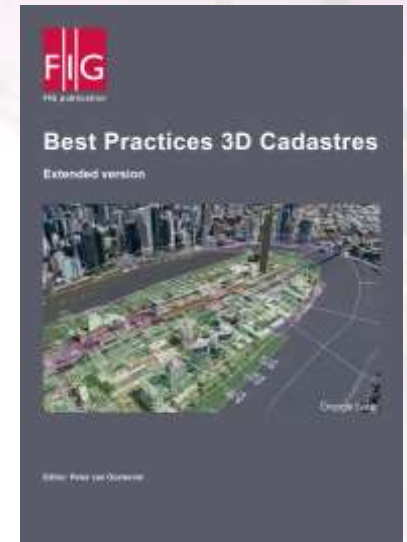
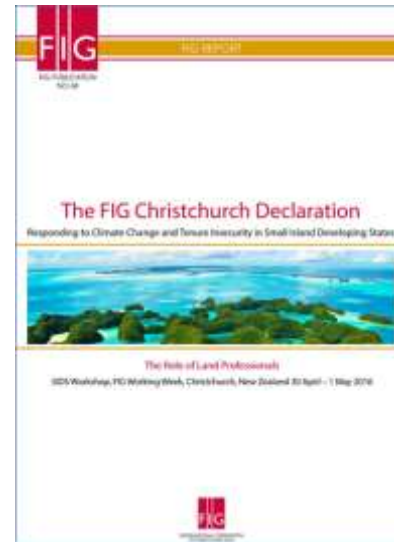
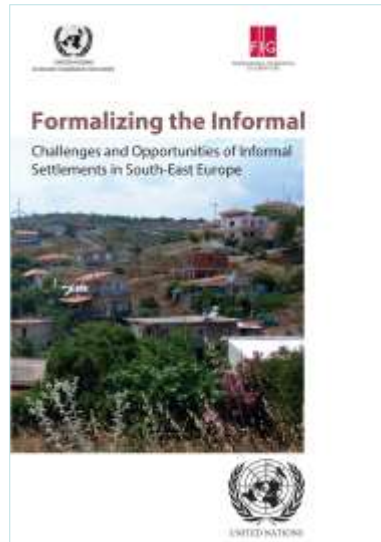
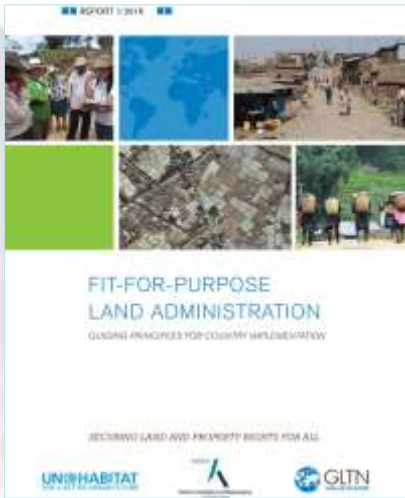
XXVI FIG Congress 2018

6-11 May 2018 ISTANBUL

EMBRACING OUR SMART WORLD WHERE THE CONTINENTS CONNECT:

ENHANCING THE GEOSPATIAL MATURITY OF SOCIETIES

FIG Publications 2015- May 2018



ORGANISED BY



MAIN SUPPORTERS

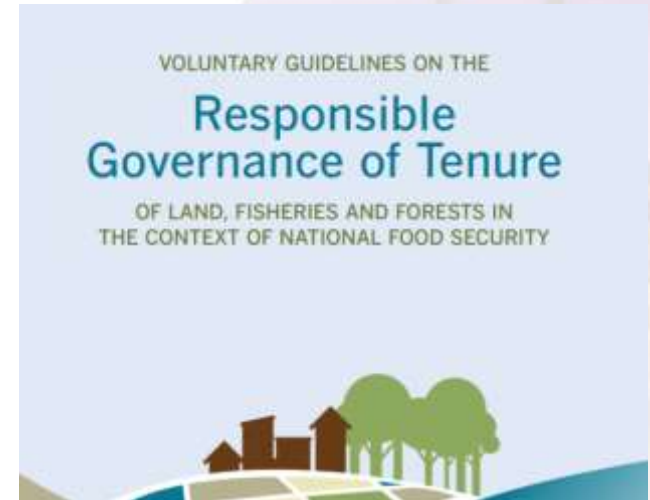


PLATINUM SPONSORS



Collaboration with FAO

- **2017 WW : FIG academic forum and commission 2** are doing excellent work to influence courses;
- **FIG Action Plan for members:** implement VGGT & policy topics; learn from existing experiences; promote VGGT technical guides & participate in reviewing them; establish national multi-stakeholder platforms in all countries; introduce UN-FAO e-learning programs in corresponding curricula
- **1 session on land consolidation**
- **2018 Congress: FIG academic forum focus on VGGT, 1 session on VGGT & 1 session on land consolidation**





XXVI FIG Congress 2018

6-11 May 2018 ISTANBUL

EMBRACING OUR SMART WORLD WHERE THE CONTINENTS CONNECT:

ENHANCING THE GEOSPATIAL MATURITY OF SOCIETIES

Collaboration with UNGGIM

- **UN GGIM Expert Group on Land Administration, March, Amsterdam, (C. Lemmen)**
- **UN-GGIM: Europe Fourth Plenary Meeting, June, Belgium (VP Lilje)**
- **Technical Seminar on Reference by FIG Com 5 and FIG APCDN, in cooperation with Japan Federation of Surveyors, IAG, UN-GGIM-AP and ICG, July, Japan, R.Sarib**
- **the 7TH UNGGIM Session NY, August 2016:**
 - President participated (presentation at UNGGIM Academic Network), VP Lilje, G.Schennach**
- **6th UN-GGIM-AP Plenary Meeting & FIG APCDN, October, Japan VP Lilje, Rob Sarib**
- **5th UN-GGIM High Level Forum, subcommittee on Geodesy, Nov, Mexico, VP Lilje**



UN-GGIM Geospatial Societies, 2017

MAIN SUPPORTERS



UN, Mexico, Nov, 2017



XXVI FIG Congress 2018

6-11 May 2018 ISTANBUL

EMBRACING OUR SMART WORLD WHERE THE CONTINENTS CONNECT:

ENHANCING THE GEOSPATIAL MATURITY OF SOCIETIES

The World Bank

President, VP DD & VP OE as well as Com8 & 9 Chairs participated in the WB conferences March 2017 & 2018, master classes and strategic sessions

Finnish reception in USA, GLTN, HABITAT FOR HUMANITY receptions: networking events



- *MoU FIG/WB on joint research & conferences in 2018 (Greece)*
- *President presented a paper, chaired TSs (2017&18) the progress on the compilation of the **FIG / UNECE Guidelines for Formalizing the Informal***
- *Strategic sessions on FFP , Valuation of unregistered lands, Gender in 2017 & 2018*
- *Celebrations for the Global Surveyors Day*

ORGANISED BY



MAIN SUPPORTERS



PLATINUM SPONSORS





XXVI FIG Congress 2018

6-11 May 2018 ISTANBUL

EMBRACING OUR SMART WORLD WHERE THE CONTINENTS CONNECT:

ENHANCING THE GEOSPATIAL MATURITY OF SOCIETIES

Cooperation with UNECE WPLA

- **President** presented her **on-going research** on informal development in the region and on formalization practices; as well as the progress of the compilation of the **guidelines for formalization**
- **President** participated in the **10th session of the Working Party on Land Administration** and is elected as **UNECE WPLA bureau member** in March 2017 and made a presentation about a future joint research



PLATINUM SPONSORS





XXVI FIG Congress 2018

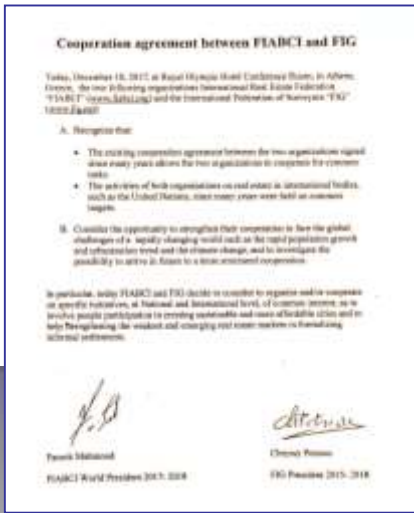
6-11 May 2018 ISTANBUL

EMBRACING OUR SMART WORLD WHERE THE CONTINENTS CONNECT:

ENHANCING THE GEOSPATIAL MATURITY OF SOCIETIES

Cooperation with FIABCI events, 2017, 2018

Agreement for Cooperation with the International Real Estate Federation (FIABCI) on Sustainable Real Estate Markets and Formalization of Informal Development





XXVI FIG Congress 2018

6-11 May 2018 ISTANBUL
EMBRACING OUR SMART WORLD WHERE THE CONTINENTS CONNECT:
ENHANCING THE GEOSPATIAL MATURITY OF SOCIETIES

FIG MAJOR STRATEGIC EVENTS 2015- May 2018



MAIN SUPPORTERS



SPONSORS





XXVI FIG Congress 2018

6-11 May 2018 ISTANBUL

EMBRACING OUR SMART WORLD WHERE THE CONTINENTS CONNECT:

ENHANCING THE GEOSPATIAL MATURITY OF SOCIETIES

Global FIG representation in activities and events

FIG Member Associations
2018



ORGANISED BY



MAIN SUPPORTERS



PLATINUM SPONSORS





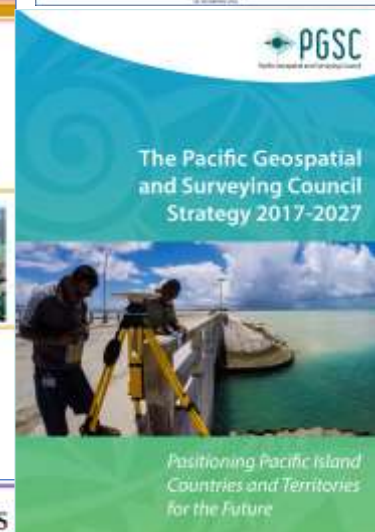
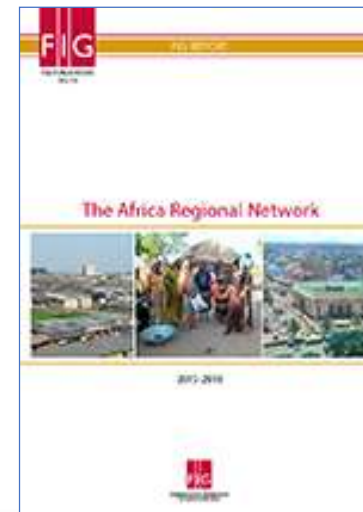
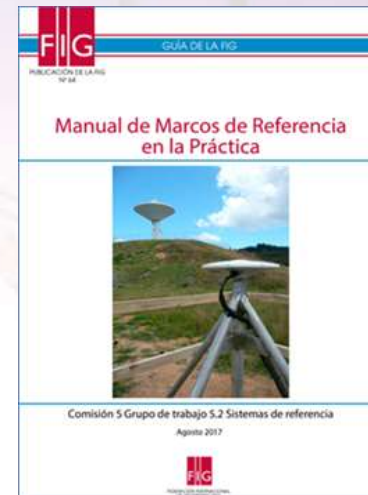
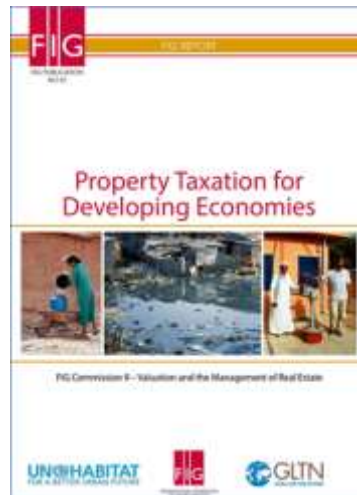
XXVI FIG Congress 2018

6-11 May 2018 ISTANBUL

EMBRACING OUR SMART WORLD WHERE THE CONTINENTS CONNECT:

ENHANCING THE GEOSPATIAL MATURITY OF SOCIETIES

FIG Pub on New Trends in Spatial Information: Surveyors' Role in the Era of Crowdsourcing



ORGANISED BY



MAIN SUPPORTERS



PLATINUM SPONSORS



FIG
2018
ISTANBUL

XXVI FIG Congress 2018

6-11 May 2018 ISTANBUL

EMBRACING OUR SMART WORLD WHERE THE CONTINENTS CONNECT:

ENHANCING THE GEOSPATIAL MATURITY OF SOCIETIES



FIG Office
FIG Council
FIG Commission Chairs
FIG TF Chairs
Chairs of Permanent Institutions and
Networks
FIG members

*Thank you all for the great cooperation
and your valuable contributions in 2017*

ORGANISED BY



MAIN SUPPORTERS



PLATINUM SPONSORS

