

Presented at the FIG Working Week 2016,
May 2-6, 2016 in Christchurch, New Zealand

Building Floor Levels and Verticality Surveys: Data capture and presentation

Phil Dewar

Fox and Associates,
Christchurch



FIG Working Week 2016

CHRISTCHURCH, NEW ZEALAND 2-6 MAY 2016

Recovery

from disaster

Organised by



Platinum Partners



Diamond Partner





FIG Working Week 2016

CHRISTCHURCH, NEW ZEALAND 2-6 MAY 2016

Recovery

from disaster



Platinum Partners:



Diamond Partner





New Work Demands:

- Building assessment surveys
 - Vertical condition
 - Floor levels
- Minimal prior experience
- Data accuracy, quantity, timeliness





Floor Level Surveys – Data Capture Considerations:

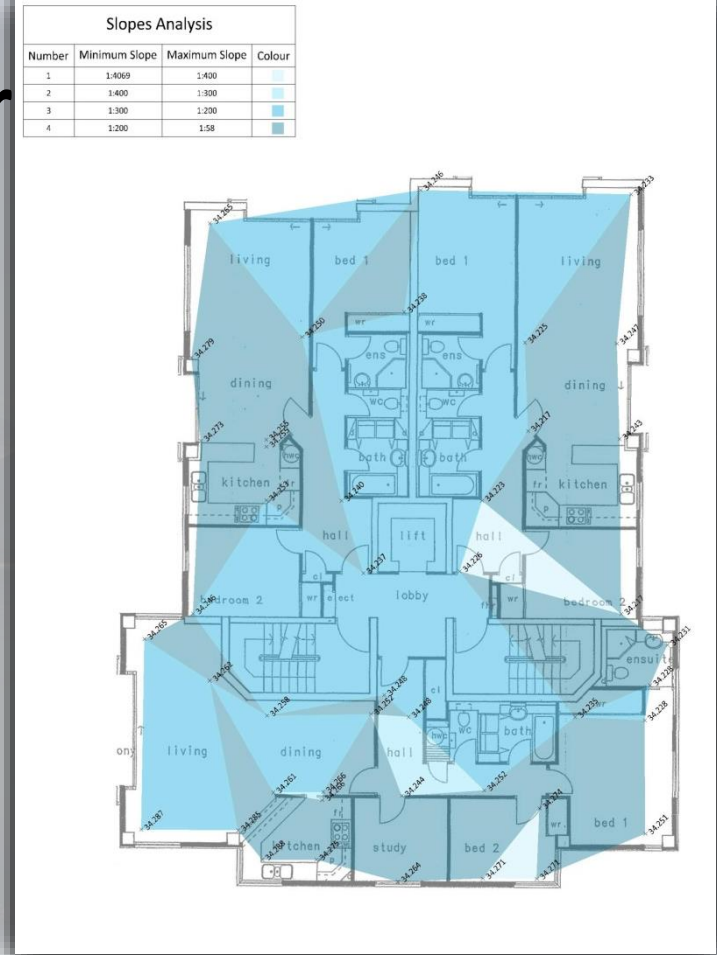


- Accuracy requirements
- Equipment choice
- Appropriate personnel
- Selection of floor level measurement locations
- Floor coverings



Floor Level Surveys – Data Pr

- Floor level positions
- Referenced to floor plan layout
- Contours
- False origin datum
- Colours
- Additional analyses





Verticality Surveys – Data Capture Considerations:

- Structure assumptions
- Site limitations
- Equipment selection
- Expectations of end-users
- Processing methods and data-useability

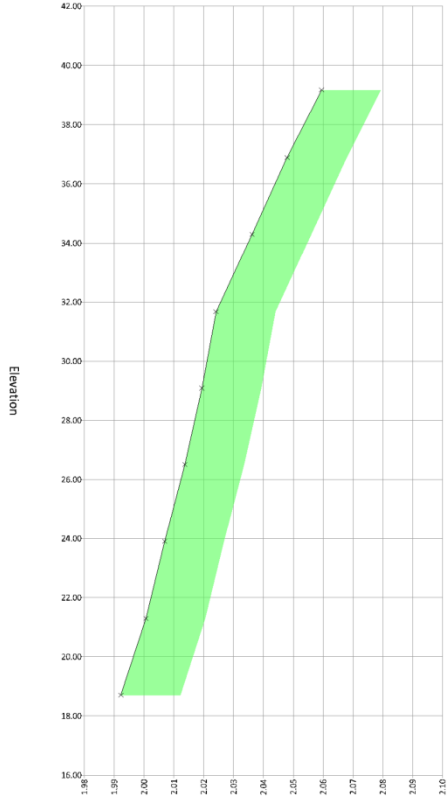
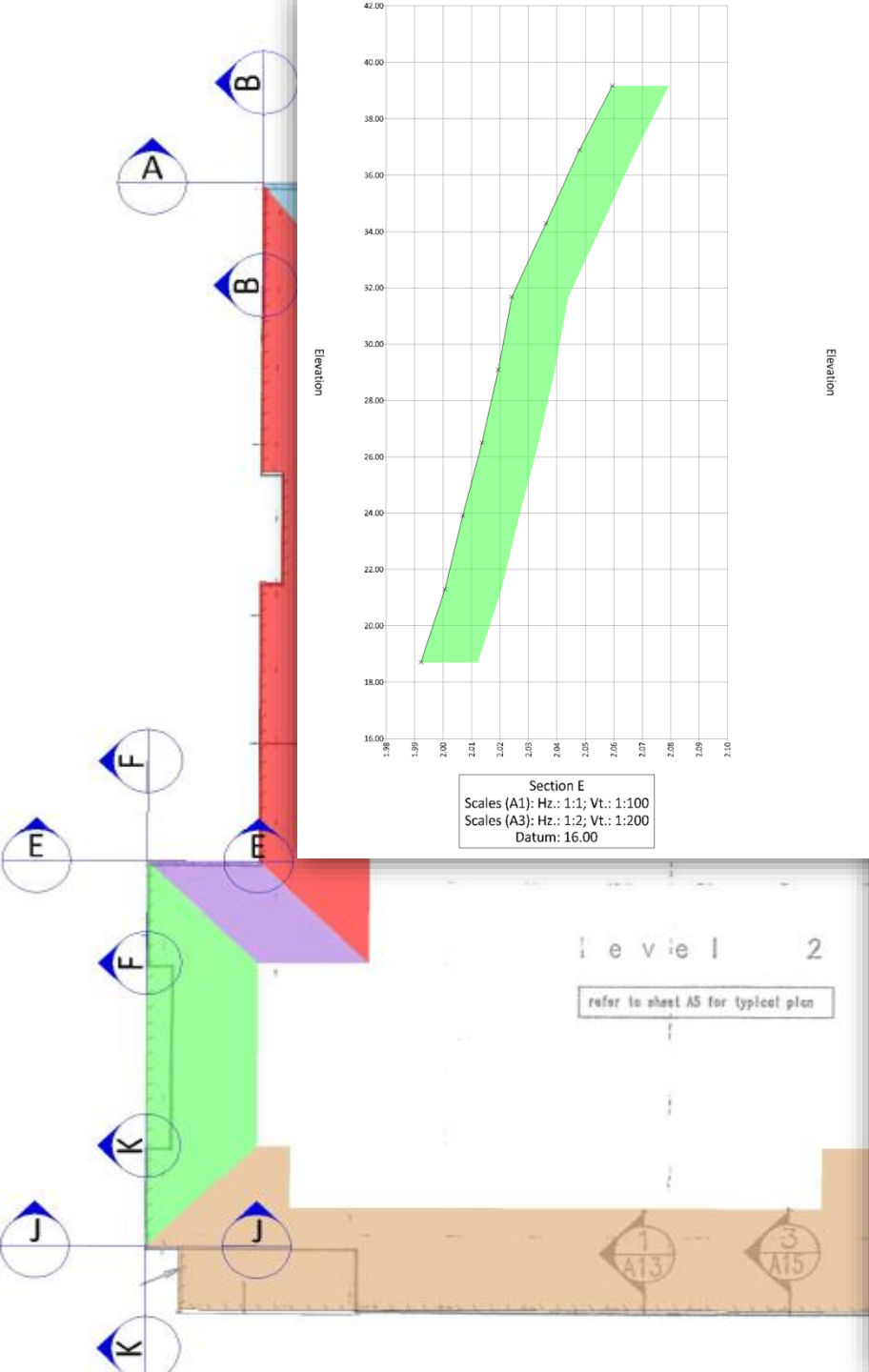


16

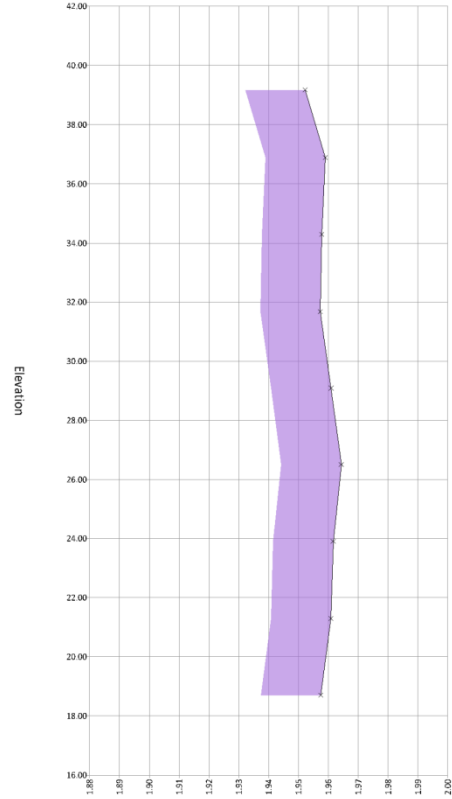
Recovery

from disaster

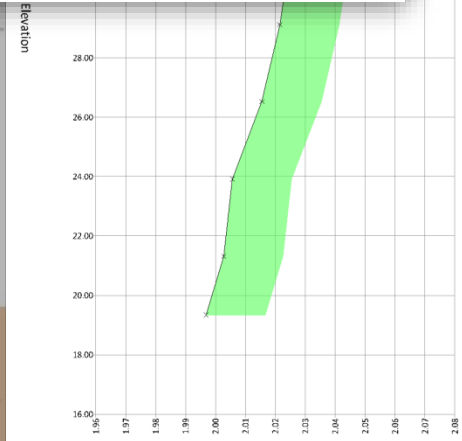
on:



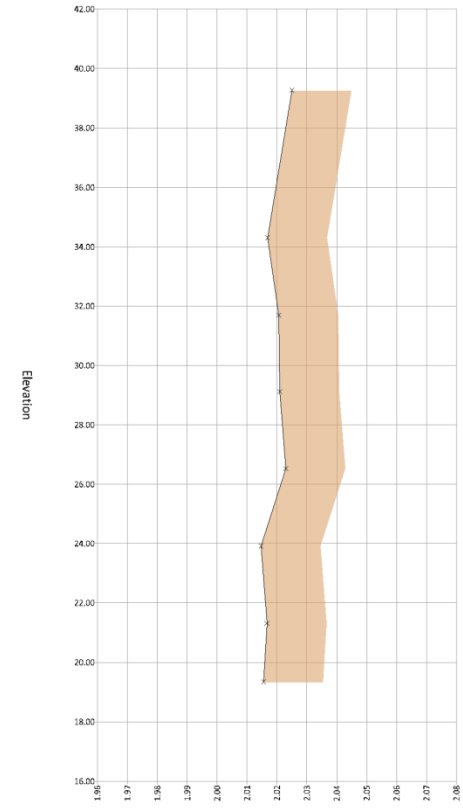
Section E
Scales (A1): Hz.: 1:1; Vt.: 1:100
Scales (A3): Hz.: 1:2; Vt.: 1:200
Datum: 16.00



Section F
Scales (A1): Hz.: 1:1; Vt.: 1:100
Scales (A3): Hz.: 1:2; Vt.: 1:200
Datum: 16.00



Section J
Scales (A1): Hz.: 1:1; Vt.: 1:100
Scales (A3): Hz.: 1:2; Vt.: 1:200
Datum: 16.00



Section K
Scales (A1): Hz.: 1:1; Vt.: 1:100
Scales (A3): Hz.: 1:2; Vt.: 1:200
Datum: 16.00



FIG Working Week 2016

CHRISTCHURCH, NEW ZEALAND 2-6 MAY 2016

Recovery

from disaster



Platinum Partners:



Diamond Partner

