

Facing the Global Agenda – Focus on Land Governance

Prof. Stig Enemark



President

Aalborg University, Denmark

FIG WORKING WEEK
EILAT, ISREAL, 3-8 MAY 2009

Outline of presentation

The global agenda

- Facing the Millennium Development Goals

From measurement to management

- The changing role of the surveyors

Land governance

- Managing land rights, restrictions, and responsibilities

The role of FIG

- Capacity development to face the challenges

Do Surveyors have a role to play in the global agenda?

Yes !

Simply, no development will take place without having a spatial dimension

And no development will happen without the footprint of the surveyor

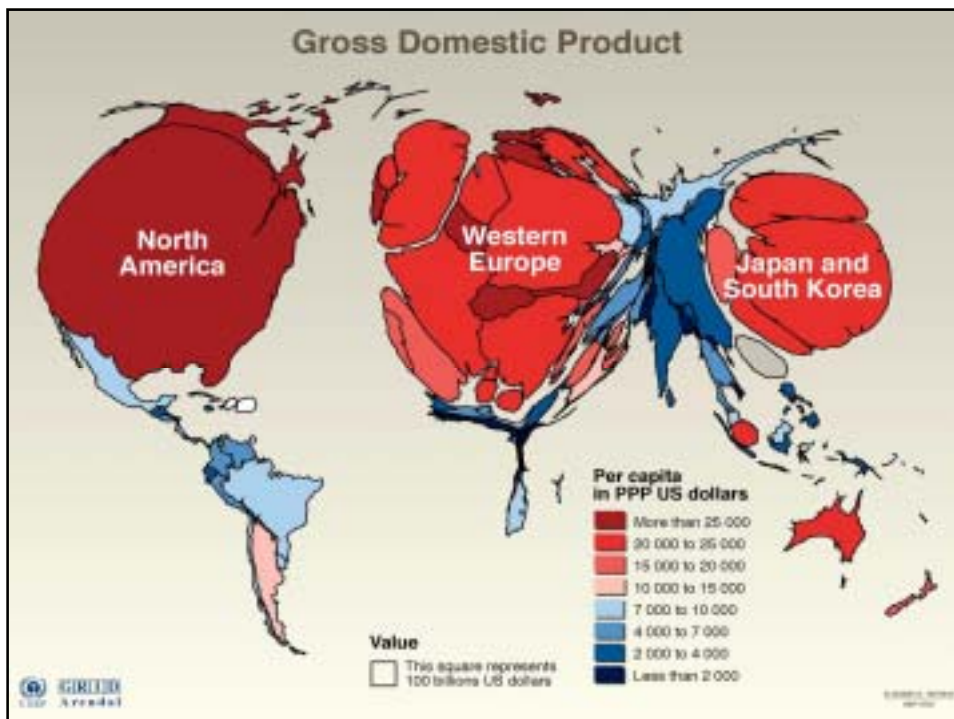
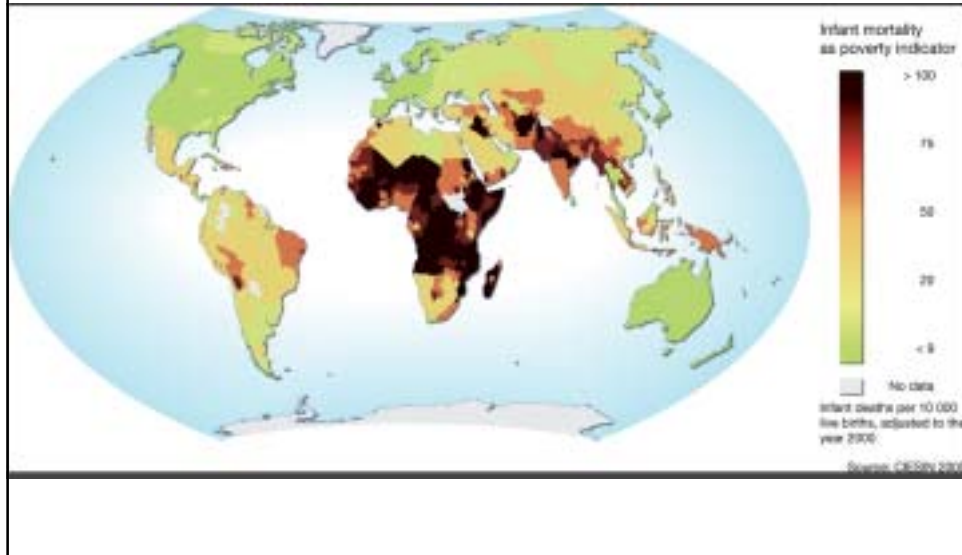
The Millennium Development Goals

- Goal 1: Eradicate extreme poverty and hunger
- Goal 2: Achieve universal primary education
- Goal 3: Promote gender equality and empower women
- Goal 4: Reduce child mortality
- Goal 5: Improve maternal health
- Goal 6: Combat HIV/AIDS, malaria and other diseases
- Goal 7: Ensure environmental sustainability

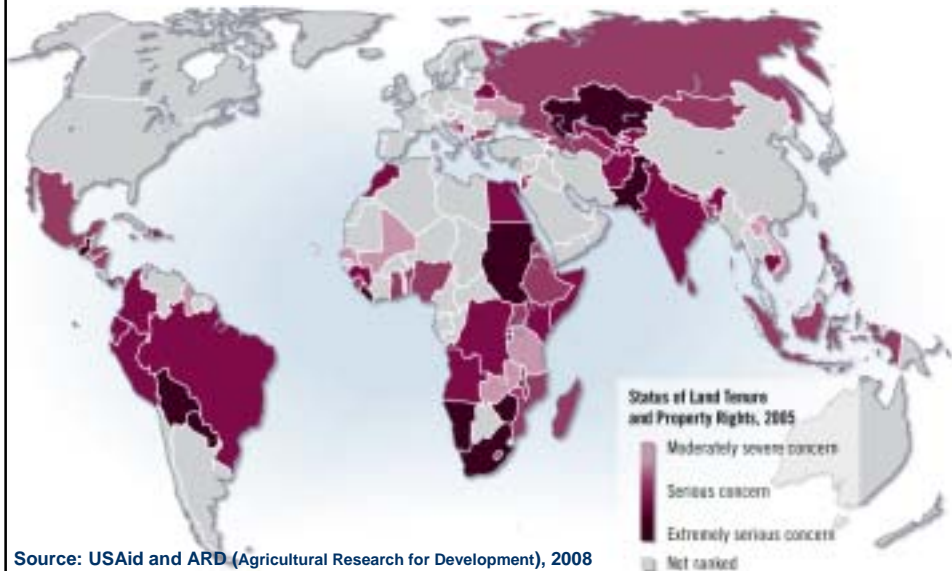
Goal 8: Develop a Global Partnership for Development

The framework includes 18 targets and 48 indicators enabling the ongoing monitoring of annual progress

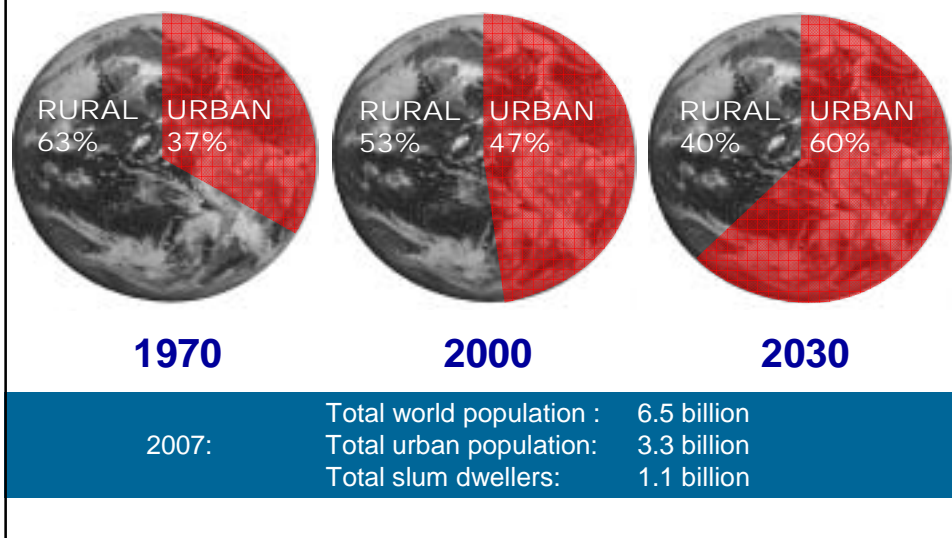
World status of poverty



World status of land tenure and property rights



Urban population growth





Kibera, Nairobi, 250 ha, 1 mill+ people

It is all about:

- People,** human rights, engagement and dignity
- Politics,** land policies and good governance
- Places,** shelter, land rights, and natural resources
- and **Power,** decentralisation and empowerment



Outline of presentation

The global agenda

- Facing the Millennium Development Goals

From measurement to management

- The changing role of the surveyors

Land governance

- Managing land rights, restrictions, and responsibilities

The role of FIG

- Capacity development to face the challenges

Current  policies

Is the role of the surveyors changing ?

The role of surveyors is changing

▪ From measurement

Surveyors will still be high level experts within measurement science, but due to technology development the role is changing more into managing the measurements

▪ To management

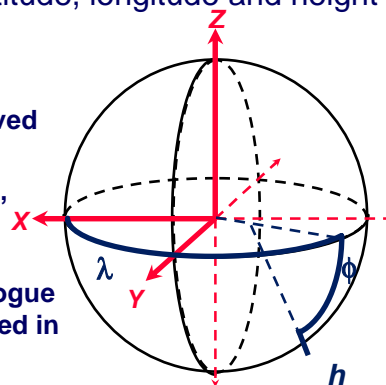
Surveyors will increasingly contribute to building sustainable societies as experts in managing land and properties

The land professionals

Positioning infrastructures

Versus traditional Geodetic Datum

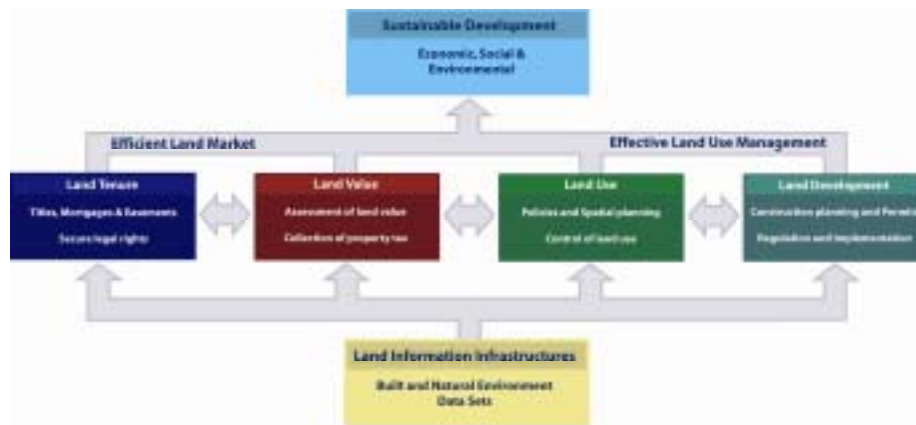
- Enables description of position as latitude, longitude and height and underpins all geo-spatial data;
- Characteristics:
 - Coverage - initially local but has evolved to national and continental;
 - Measurement – initially ground based, labor intensive, now more efficient using GNSS;
 - Data management - initially very analogue but now a key part and often integrated in Spatial data Infrastructures (SDI)



Positioning infrastructures are the only truly global infrastructure underscoring capture and management of spatial data world wide

Source: Matt Higgins, Washington, 2009

A global land management perspective



LAS provide the infrastructure for implementation of land policies and land management strategies in support of sustainable development.

Outline of presentation

The global agenda

- Facing the Millennium Development Goals

From measurement to management

- The changing role of the surveyors

Land governance

- Managing land rights, restrictions, and responsibilities

The role of FIG

- Capacity development to face the challenges

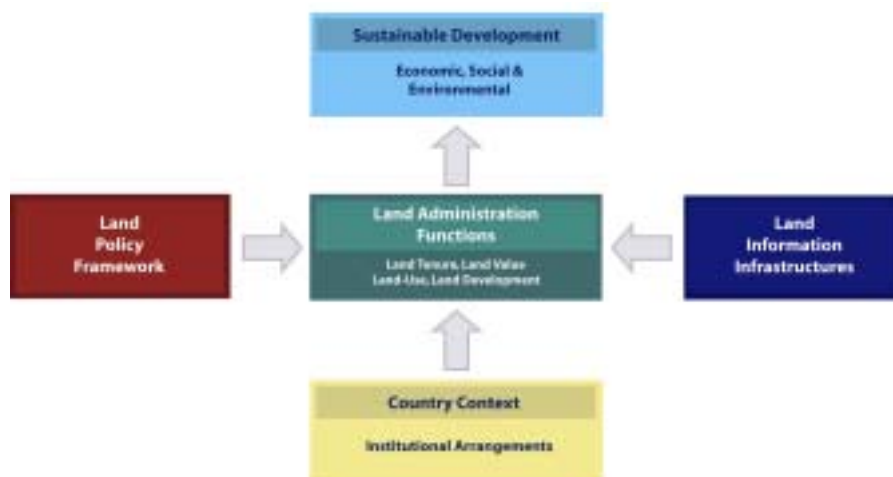
Land governance

Land governance is about the policies, processes and institutions by which land, property and natural resources are managed.

This includes decisions on access to land; land rights; land use; and land development.

Land governance is about determining and implementing sustainable land policies.

Understanding the land management paradigm

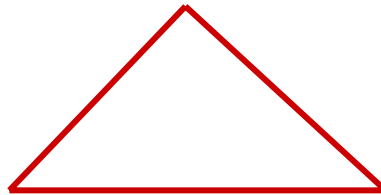


Interests in land

Land administration systems are the basis for conceptualising rights, restrictions and responsibilities related to people, policies and places.

Rights:

Registration and security of tenure positions



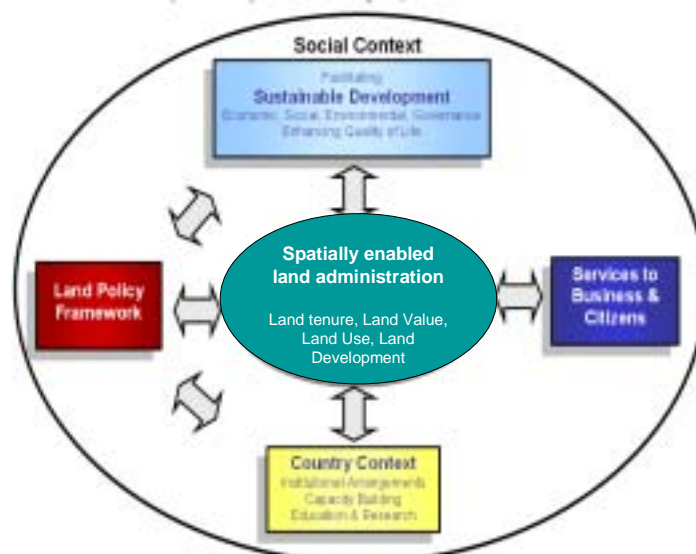
Responsibilities:

Social, ethical commitment to environmental sustainability and good husbandry

Restrictions:

Planning and control of land-use and land development

A land management vision



Place matters

Everything happens somewhere

If we can understand more about the nature of “place” where things happen, and the impact on the people and assets on that location, we can plan better, manage risk better, and use our resources better.

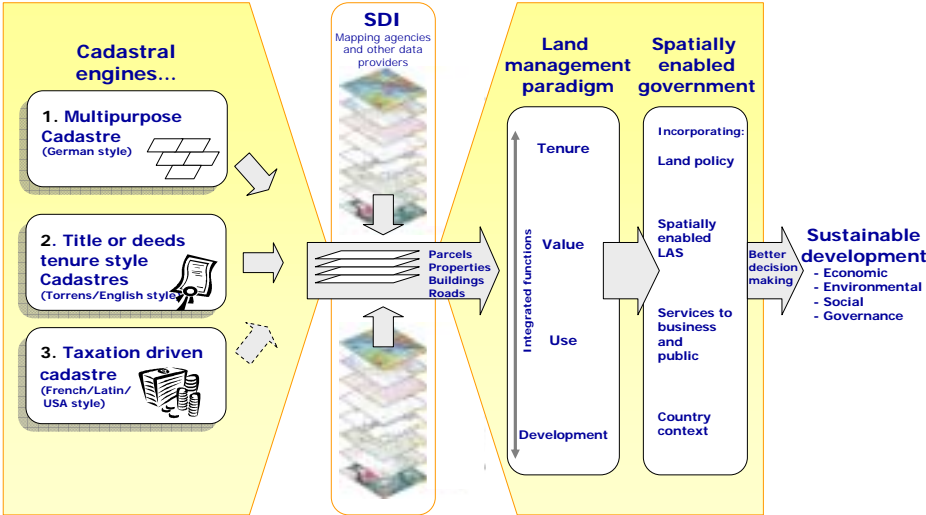
“Heading toward spatial enabled society”

Spatially Enabled Government

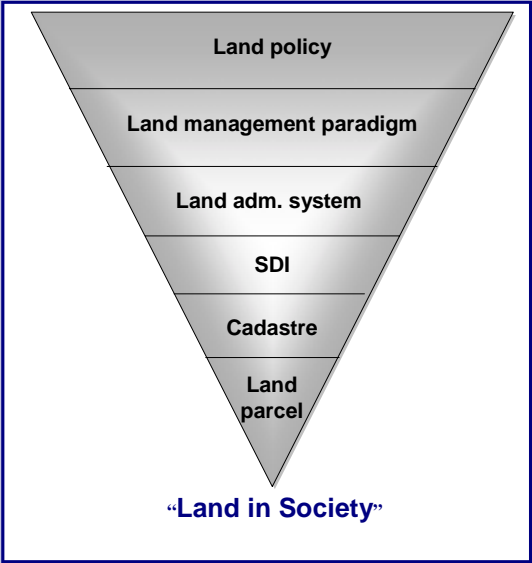
A spatially enabled government organises its business and processes around “place” based technologies, as distinct from using maps, visuals, and web-enablement.

The technical core of Spatially Enabling Government is the **spatially enabled cadastre**.

Significance of the Cadastre



Land Governance – a hierarchy of land issues



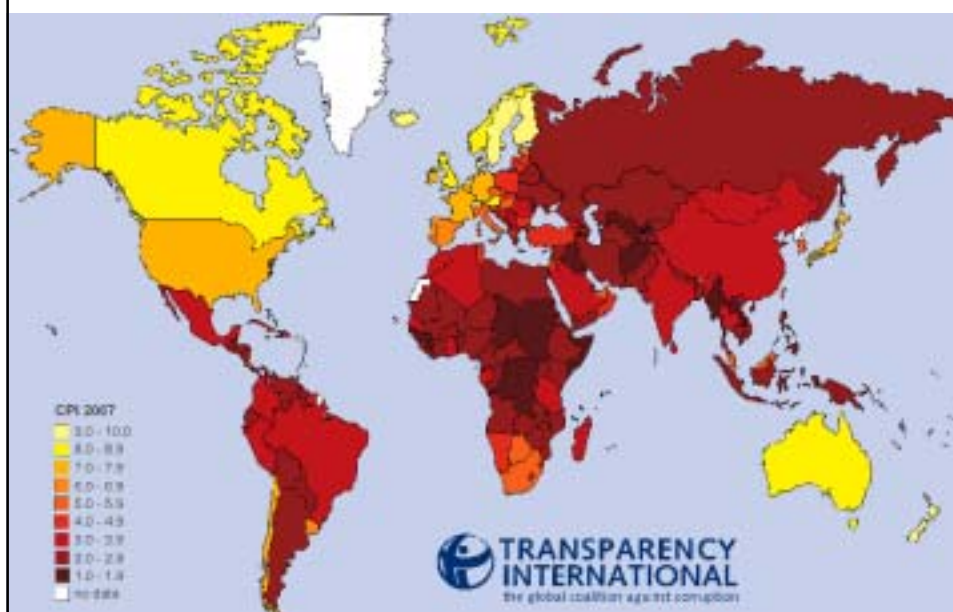
Good governance is:



- **Sustainable and locally responsive:** It balances the economic, social, and environmental needs of present and future generations, and locates its service provision at the closest level to citizens.
- **Legitimate and equitable:** It has been endorsed by society through democratic processes and deals fairly and impartially with individuals and groups providing non-discriminatory access to services.
- **Efficient, effective and competent:** It formulates policy and implements it efficiently by delivering services of high quality
- **Transparent, accountable and predictable:** It is open and demonstrates stewardship by responding to questioning and providing decisions in accordance with rules and regulations.
- **Participatory and providing security and stability:** It enables citizens to participate in government and provides security of livelihoods, freedom from crime and intolerance.
- **Dedicated to integrity:** Officials perform their duties without bribe and give independent advice and judgements, and respects confidentiality. There is a clear separation between private interests of officials and politicians and the affairs of government.

Adapted from FAO, 2007

Good governance and corruption



Outline of Presentation

The global agenda

- Facing the Millennium Development Goals

From measurement to management

- The changing role of the surveyors

Land governance

- Managing land rights, restrictions, and responsibilities

The role of FIG

- Capacity development to face the challenges

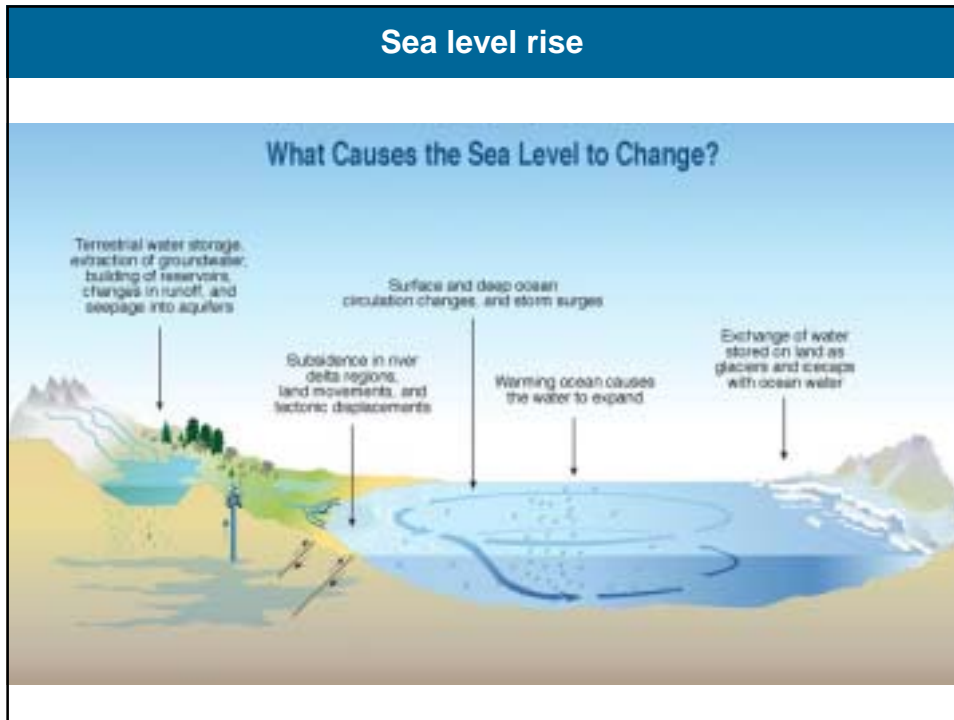
Facing the new challenges

Focusing on land Governance and achieving the MDGs, also includes facing the big challenges of the new millennium:

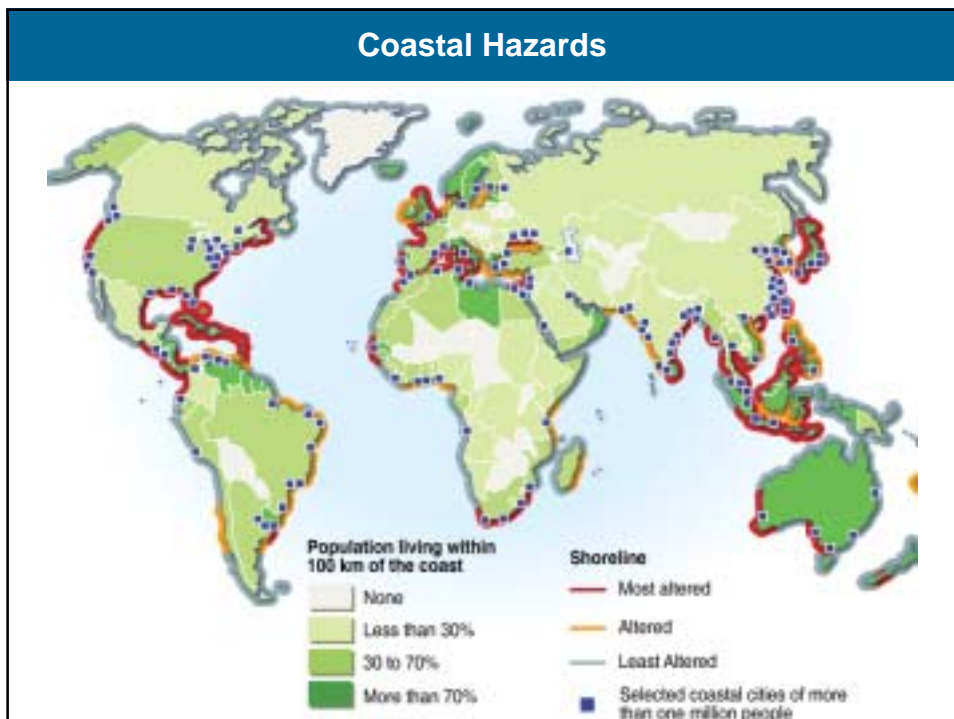
- Climate change
- Food shortage
- Energy scarcity
- Urban growth
- Environmental degradation
- Natural disasters
- Global financial crisis

**All these challenges relate to governance and management of land
The surveyors – the land professionals - play a key role**

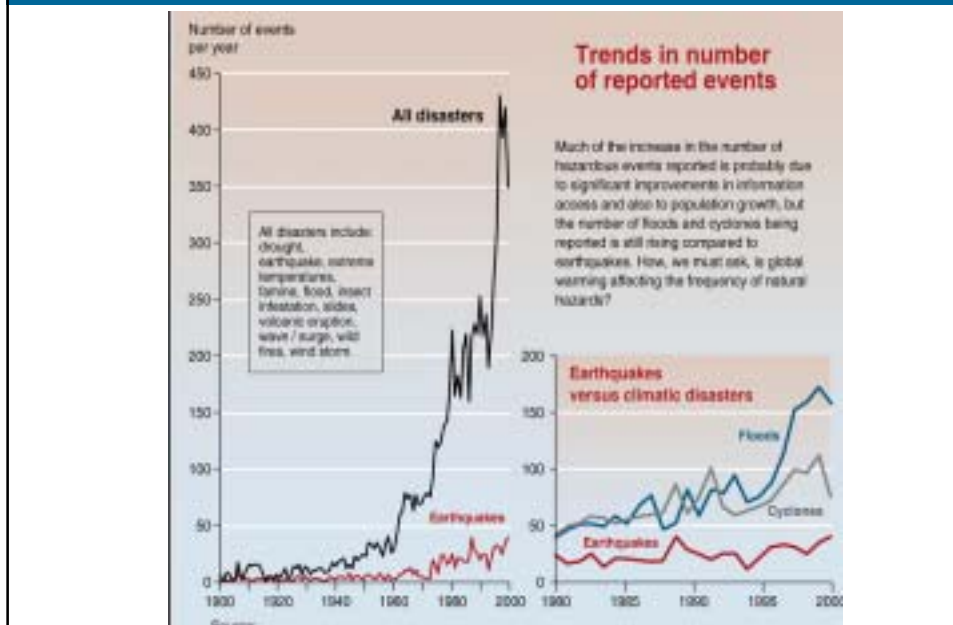
Sea level rise



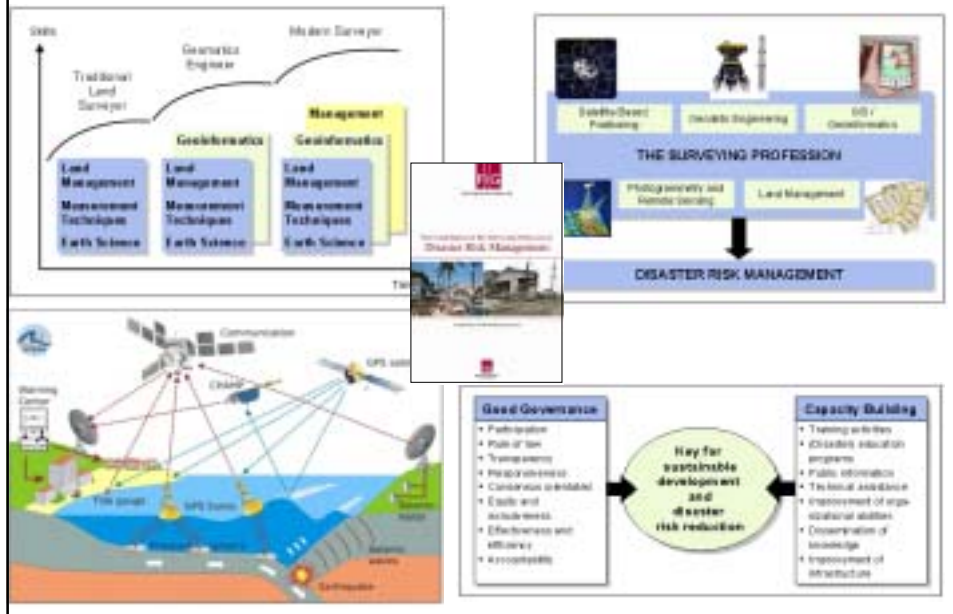
Coastal Hazards



Increase in disasters



Disaster Risk Management – FIG publication no 38




The role of the surveying profession

Land governance and management is a core area for surveyors/geo-spatial profession. It will require:

- High level geodesy models to predict future change
- Modern surveying and mapping functions to support management and implementation
- Spatial data infrastructures to support decision making on the natural and built environment
- Secure tenure systems
- Sustainable systems for land valuation, land use management and land development
- Systems for transparency and good governance

Land governance is a cross cutting issue confronting all traditional silo-organised land administration systems.

The role of

 intend to play a strong role in building the capacity to design, build and manage national surveying and land administration systems that facilitates sustainable Land Governance in support of the MDGs.

“Building the capacity
for taking the land policy agenda forward”

XXIV  International Congress 2010



www.fig2010.com

11 – 16 April 2010



*Facing the Challenges
- Building the Capacity*

Surveyors Key Role in Accelerated Development

New Horizons across the Red Sea



Thank you for your attention