

As-built Documentation and Reverse Engineering Derived from Laser Scanning

Ivo Milev¹
Lothar Gruendig²

¹ Technet GmbH, 10777 Berlin, Germany

² Technical University Berlin, 10624 Berlin, Germany

Outlines

- Project structure
- Unique reference frame
- Tools for data processing
- Surface approximation
- Data acquisition of railway facilities
- Clearance simulation

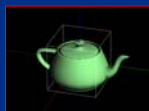
TS38.2 - As-built Documentation and Reverse Engineering Derived from Laser Scanning
FIG Working Week 2005 - Cairo, Egypt April 16-21, 2005



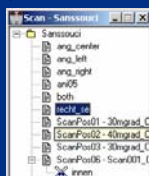
Project structure and project management

Common conditions :

virtual
reality



- Data base related point cloud management
- Object oriented data processing
- Nodes , Edges , Polygons, Surfaces, Volume bodies
- As build documentation and related maintenance



TS38.2 - As-built Documentation and Reverse Engineering Derived from Laser Scanning
FIG Working Week 2005 - Cairo, Egypt April 16-21, 2005



Final products derived from the Laser scan data processing

TS38.2 - As-built Documentation and Reverse Engineering Derived from Laser Scanning
FIG Working Week 2005 - Cairo, Egypt April 16-21, 2005



North Pavilion – Big Colonnades Schloss Sanssouci



TS38.2 - As-built Documentation and Reverse Engineering Derived from Laser Scanning
FIG Working Week 2005 - Cairo, Egypt April 16-21, 2005



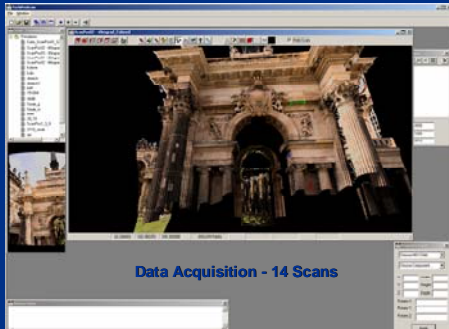
Registration of the Scanner Stations Data

- Targets placed on the object
- Station linkage via non natural references placed in the scans
 - Cylinder
 - Sphere
- Object space references
 - Planes
 - Curved surfaces
- Iterative-Closest-Point-Method

TS38.2 - As-built Documentation and Reverse Engineering Derived from Laser Scanning
FIG Working Week 2005 - Cairo, Egypt April 16-21, 2005



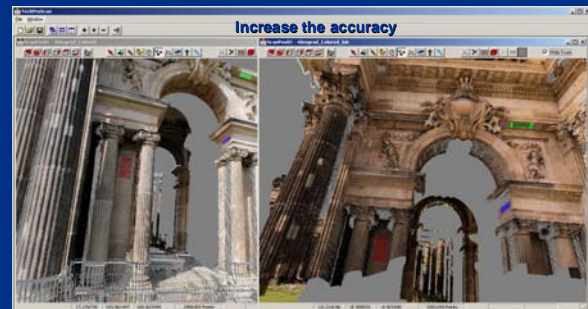
North Pavilion – Big Colonnades



TS38.2 - As-built Documentation and Reverse Engineering Derived from Laser Scanning
FIG Working Week 2005 - Cairo, Egypt April 16-21, 2005



Corresponding point cloud surfaces



TS38.2 - As-built Documentation and Reverse Engineering Derived from Laser Scanning
FIG Working Week 2005 - Cairo, Egypt April 16-21, 2005



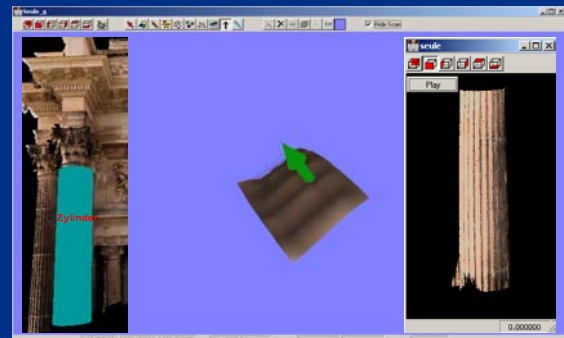
Processing tools

- Fitting of geometrical primitives like lines, circles, ellipses, planes, spheres, cylinders and cones
- Non completed point clouds fitting of circle and ellipses curves, sphere segments, parts of cylinders, cone obtuse
- Fitting of cover elements for circle, sphere and quader (important for the segmentation - the so called functional patches)
- Fitting of smooth free form curves (NURBS)
- Comparison between the point cloud and the fitted element with deflections, measuring against CAD and false color visualization

TS38.2 - As-built Documentation and Reverse Engineering Derived from Laser Scanning
FIG Working Week 2005 - Cairo, Egypt April 16-21, 2005



Geometrical Primitives



TS38.2 - As-built Documentation and Reverse Engineering Derived from Laser Scanning
FIG Working Week 2005 - Cairo, Egypt April 16-21, 2005



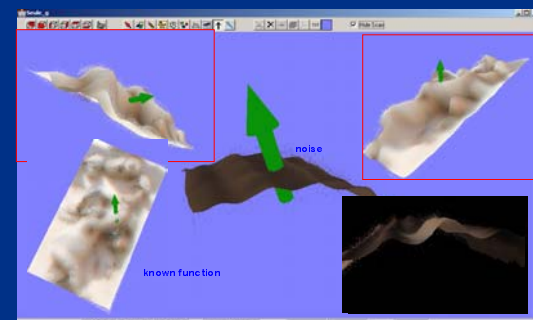
Non Uniform Rational B-Spline (NURBS)

- NURBS have a precise and well-known definition.
- NURBS can accurately represent both: standard geometric objects like lines, circles, ellipses, spheres and tori, and free-form geometry like car bodies, other complex double curved surfaces also human bodies.
- The amount of information required for a NURBS representation of a piece of geometry is much smaller than the amount of information required by common faceted approximations .
- NURBS can be implemented on a computer in a way that is both efficient and accurate.

TS38.2 - As-built Documentation and Reverse Engineering Derived from Laser Scanning
FIG Working Week 2005 - Cairo, Egypt April 16-21, 2005



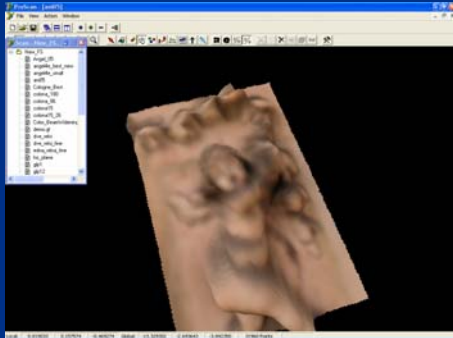
Generation of free form surfaces



TS38.2 - As-built Documentation and Reverse Engineering Derived from Laser Scanning
FIG Working Week 2005 - Cairo, Egypt April 16-21, 2005



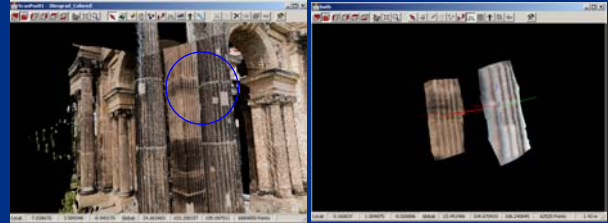
Generation of free form surfaces



TS38.2 - As-built Documentation and Reverse Engineering Derived from Laser Scanning
FIG Working Week 2005 - Cairo, Egypt April 16-21, 2005



Measuring distances between free form surfaces



TS38.2 - As-built Documentation and Reverse Engineering Derived from Laser Scanning
FIG Working Week 2005 - Cairo, Egypt April 16-21, 2005



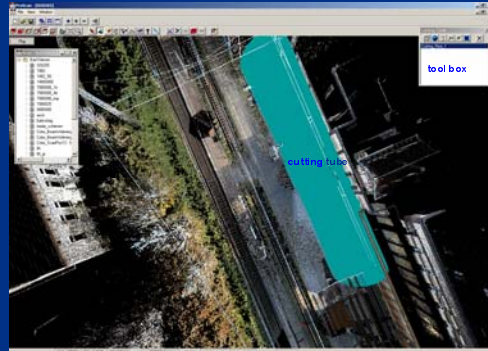
Feasibility study Railway



TS38.2 - As-built Documentation and Reverse Engineering Derived from Laser Scanning
FIG Working Week 2005 - Cairo, Egypt April 16-21, 2005



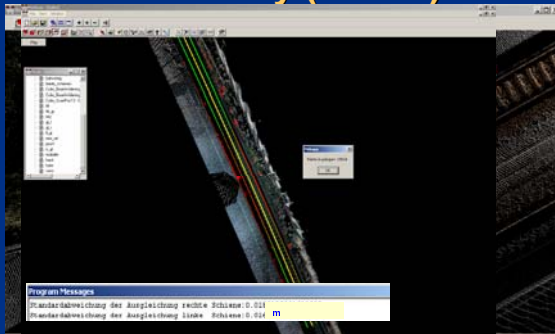
3D Data - Restriction



TS38.2 - As-built Documentation and Reverse Engineering Derived from Laser Scanning
FIG Working Week 2005 - Cairo, Egypt April 16-21, 2005



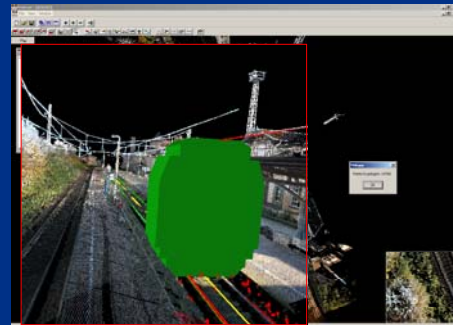
Automated Rail Geometry Recovery (ARGR)



TS38.2 - As-built Documentation and Reverse Engineering Derived from Laser Scanning
FIG Working Week 2005 - Cairo, Egypt April 16-21, 2005



TLS for 3D Data Acquisition



TS38.2 - As-built Documentation and Reverse Engineering Derived from Laser Scanning
FIG Working Week 2005 - Cairo, Egypt April 16-21, 2005



