

# Long-term geodetic monitoring of seasonal deformations of earth dams and relevant finite element verification

George Pantazis<sup>1</sup>, Dimitrios Skarlatos<sup>2</sup>, Loizos Pelecanos<sup>3</sup>

<sup>1</sup> Department of Rural and Surveying Engineering, National Technical University of Athens, Greece, ([gpanta@survey.ntua.gr](mailto:gpanta@survey.ntua.gr))

<sup>2</sup> Department of Civil Engineering and Geomatics, Cyprus University of Technology, Cyprus

<sup>3</sup> Department of Architecture and Civil Engineering, University of Bath, UK

Earth dams are massive structures retaining large volumes of reservoir-water. They constitute an important part of modern civil infrastructure contributing to water supply, irrigation and power generation. Their structural stability/safety is crucial, as a possible failure of a large dam will lead to a sudden release of huge amounts of water which may potentially lead to damage and casualties in the downstream. It is therefore important to monitor their deformations and the structural health to avoid any such unfortunate events.

This paper presents a comprehensive study on the long-term monitoring of earth dams. A well-documented case, the Kouris dam, which is the largest dam in Cyprus, is examined in detail. The paper consists of three main parts. The first part presents the different types of instrumentation installed and how data processing of the monitoring data is performed. The second part presents the analysis and interpretation of the monitoring data, both in the time- and frequency-domain. The third part presents relevant complementary finite-element analyses of the dam and its calculated long-term response subject to embankment construction, reservoir impoundment, operation and reservoir level fluctuations.

The collected monitoring data exhibit a consistent pattern of long-term crest settlements and downstream deformations. The magnitude of these is compared well to previous monitored dam cases and was therefore expected. It is also shown that frequency analysis reveals a strong correlation between crest settlements and reservoir level fluctuations, suggesting a seasonal variation of dam deformations. Additionally, the finite-element analysis shows that soil consolidation is the dominant mechanism of dam settlements in the short-term, whereas reservoir level fluctuations dominate in the long-term. Finally, the main message of this investigation is that robust and reliable measurements are important and high-quality and accurate monitoring data are substantial for evaluating the long-term structural health monitoring of large earth dams.

**Keywords:** *long-term monitoring; deformations; geodetic measurements; earth dams; finite element analysis; structural health monitoring*

## 1. Introduction

Earth dams built around the world are used for various purposes, such as water supply, irrigation or hydroelectric power infrastructure. Their long-term maintenance is important as this is crucial for their resilience and safety. The International Committee on Large Dams – ICOLD has identified some major threats for dam safety which include seismic activity (Elgamal et al., 1990; Pelecanos et al., 2013; 2015; 2016), internal erosion (Bridle & Fell, 2013; Shire & O’Sullivan, 2013, 2016), faulting, climate variation and change (Pytharouli & Stiros, 2005; Gikas & Sakellariou, 2008), hydraulic fracture etc. Climate variations are an important factor for dam safety as large seasonal changes (e.g. hot summers and cold winters) result in significant reservoir level changes which further affect the water pressures within the dam and the entire stress regime. It is therefore important to

understand the impact of climate changes on the behaviour of earth dams and be able to predict and quantify its effects, especially if they become a threat for the dam's safety.

A plethora of studies exist in the literature which cover field monitoring (Kyrou et al., 2005; Dounias et al., 2012), laboratory experiments and computational simulations (Tedd et al., 1997; Alonso, 2005; Charles et al., 2008) for understanding dam performance and safety under various climate conditions. Many of these studies have raised the issue of reservoir-induced dam deformations and attempted to quantify this interaction. However, this is not an easy task and therefore more studies are needed in order to fully understand the effects of reservoir level changes on dam deformations and safety.

This paper presents a combined field monitoring and computational modelling study to understand and quantify the effects of climate variation and thus reservoir level changes on the performance of earth dams. Kouris dam, the largest dam in Cyprus was instrumented and the displacement data from over 25 years are analysed and further processed to identify a relationship between reservoir level and dam crest displacements. Subsequently, a nonlinear finite element analysis is performed which analyses the entire stress history of the dam, including reservoir level changes and confirms that indeed reservoir level changes affect dam crest deformations. It is therefore suggested that continuous long-term monitoring is needed to ensure observation of the safety of earth dams.

## 2. Kouris Dam

### 2.1. Background & Geometry

Kouris dam is the largest and tallest dam in Cyprus. It is a zoned earth-rockfill and serves as the main water storage facility in the country. It was built during 1984-1988 and its embankment consists of a central clay core of low permeability, followed by thin layers of fine and coarse filters. The upstream shell consists of terrace gravels, which are adjacent to the upstream filters and then river gravels covered by rip rap on the upstream dam slope with a small cofferdam at the upstream dam toe. The downstream shell consists in its entirety by terrace gravels with talus deposits, which rest on a thin drainage gallery. Its crest is 570m long and the embankment is 112m high with the highest level of its reservoir at 102m, and its total reservoir capacity is 115 million m<sup>3</sup>. Figure 1 shows a cross-sectional view with the various soil layers.

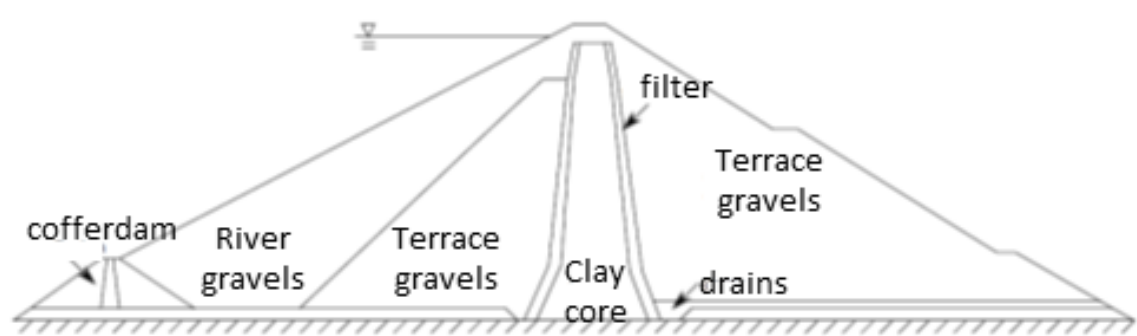


Figure 1: Geometry of the dam

### 2.1. Instrumentation

Three independent instrumentation sets are installed on the dam providing monitoring data about the deformations of the dam: (a) Embankment Crest Movement Indicators (ECMI), (b) a vertical geodetic network and (c) a three-dimensional (3D) geodetic network.

The first instrumentation network, installed in 1991, consists of an observation pillar, (fixed point) and six embankment crest movement indicators (ECMI) installed at the time of construction. The measurements of these points are being carried out (irregularly, monthly or bi-monthly) since

1990 by the Cyprus WDD. The horizontal distance and the height difference of each ECMI from the pillar was determined using a Leica TC1101 total station, which provides accuracy of  $\pm 2\text{mm} \pm 2\text{ppm}$  for the distance measurements and  $\pm 1''$  for the angle measurements.

Additionally, two modern geodetic networks were installed in 2006. A vertical (1D) and a three-dimensional (3D) control network. Generally, deformation monitoring is applied by the establishment, the measurement and the adjustment of such network. The vertical control network was established in 2006 (Constantinou, 2013). It consists of 7 control points. Six of them (R1-R6) are bronze benchmarks, located along both sides of the wall on the road at the crest of the dam and in a distance of about 100m between each other. The seventh point is the pillar T2 about 1 km far away, which serves as the fixed reference point of the network.

Three periods of measurements (July and December 2006 (Temenos, 2007) and June 2012 (Pantelidou, 2013)) were carried out for the determination of the height differences between the points by using either (a) the spirit leveling method, or (b) the accurate trigonometric heighting method (Lambrou, 2007; Lambrou & Pantazis, 2007, 2010). The latter two modern systems are extremely robust and much more accurate than the old initial system. Figure 2 shows the position of the instruments on the dam.

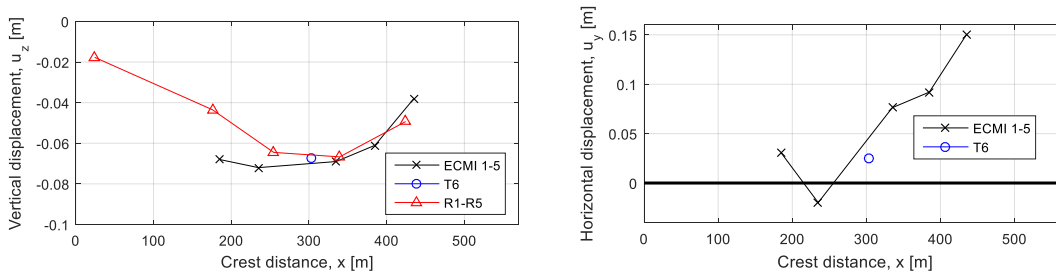


Figure 2: Instrumentation on the dam crest

### 3. Monitoring Data

#### 3.1. Dam deformations

Figure 3 shows a comparison of dam deformations (both vertical and horizontal crest displacements) as those where obtained from the three different and independent instrumentation sets over the period 2006-2012. This is the period that was monitored from all three instrumentation sets. It is shown that a very good comparison is obtained between the three monitoring data sets which confirm their accuracy and reliability. Minor observed differences are well within what might be considered “noise” and therefore the monitoring system is proved to be working well.



(a)

(b)

Figure 3: Dam deformations: profiles of (a) vertical and (b) horizontal dam crest displacements.

### 3.2. Statistical Analysis

Supplementary post-processing of the monitoring data was undertaken using statistical analysis. The aim of this exercise was to identify any relation between the reservoir level changes and the vertical displacement fluctuations and therefore recognise any causative relationship between the two. The time-histories of reservoir changes and crest settlements were analysed in the frequency domain and their dominant frequencies were determined. Because of the irregular time steps in the data, a Lomb-Scargle (Lomb, 1976; Scargle, 1982) periodogram was produced, which is similar to Fourier analysis but for non-equally spaced data. Figure 3 shows the periodograms for the reservoir level and the dam crest settlements. It is observed that both show clearly a single dominant frequency at  $2.73 (1/\text{day} \times 10^{-3})$ , which means a period of  $1000/2.73 \approx 365$  days, i.e. a full year. This supports the earlier observation that the reservoir level exhibits yearly peaks and this is in agreement with earlier observations (Pytharouli & Stiros, 2005).

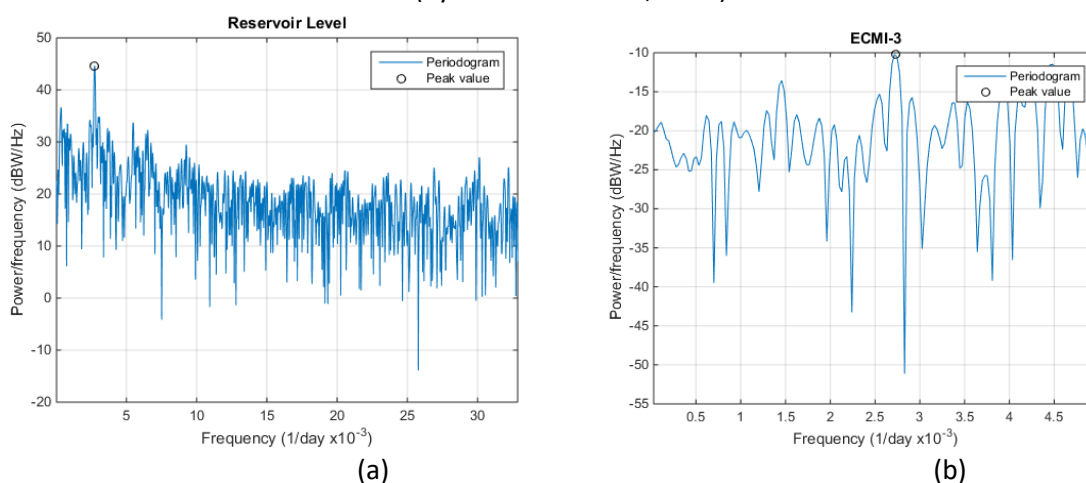


Figure 4: Statistical analysis of the monitoring data: Lomb periodogram of (a) reservoir level, (b) vertical displacements.

### 4. Finite element analysis

After a frequency relation between reservoir level changes and dam crest displacements was identified, an assessment of the relative effects of consolidation and reservoir level changes on the dam displacements was undertaken. For this, a relevant finite element analysis was conducted to investigate the long-term behaviour of the dam and understand the mechanisms of the observed long-term settlements of the dam crest. In particular, a comparison between the relative effects of soil consolidation and reservoir level fluctuations can be made.

Two-dimensional (2D) plane-strain non-linear elasto-plastic transient coupled-consolidation finite element (FE) analyses were performed with the FE software ABAQUS/Standard. The analysis was performed in a number of stages to reproduce the exact stress history of the dam. Firstly, initial stresses were initiated with level ground and then the dam embankment was constructed in successive layers over a period of 12 months. Subsequently, the reservoir was impounded and its fluctuations followed the monitored time-history of the level of the reservoir.

Figure 5 (a) shows the pore water pressure distribution within the dam at the time of full reservoir. This shows the saturation of the upstream rockfill and the drop of hydraulic head within the dam due to the seepage through the low-permeability clay core and grout curtain. Figure 5 (b) shows the vertical displacements at various points within the dam (C: crest, E: mid-height of Embankment height, F1: shallow point in the foundation, F2: deep point in the foundation).

It is shown that there is generally a good match between the field-monitored (from ECMI-4) and numerically-predicted displacement values. It is also shown that there is a general trend of downward movements due to consolidation of the dam materials and that the reservoir fluctuations do not seem to have a severe impact on the dam settlements. On the same figure, the vertical displacements in the embankment and the two foundation layers (Points E, F1 and F2) are included too. It is shown that the consolidation settlement values of the foundation layers are considerably large and comparable to those of the dam crest, which would suggest that the consolidation settlements within both the dam embankment and the foundation contribute significantly to the overall crest settlements. This is due to the seepage of the excess pore water pressure generated in the embankment and the low-permeability foundation because of the construction of the large 110m embankment. This also suggests that the effects of the reservoir level fluctuations are not very significant and the dominant mechanism inducing long-term vertical crest displacements is indeed consolidation of the soil materials of both the dam foundation and the embankment. It is therefore concluded that there is no significant effect from the reservoir level fluctuations and that the majority of displacements is due to long-term consolidation.

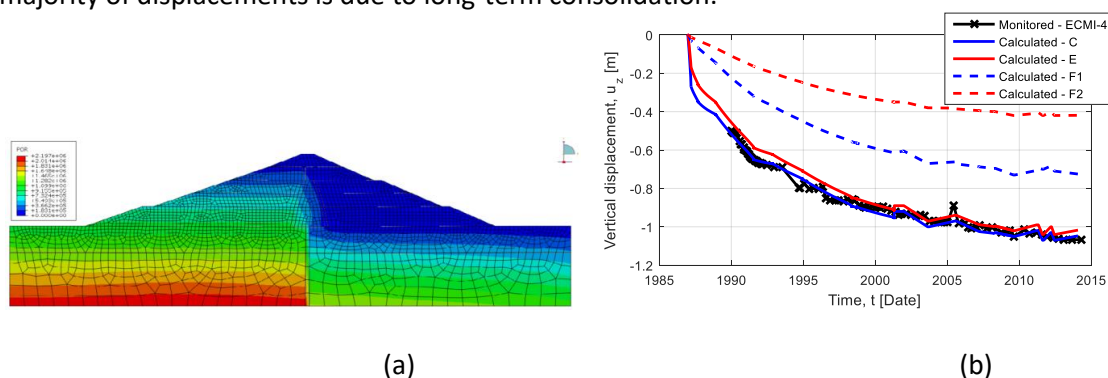


Figure 5: Finite element analysis results: (a) pore water pressure distribution, (b) vertical displacements.

## 5. Conclusions

This work studies the long-term deformation behaviour of earth dams due to climate changes, in particular due to variations of the reservoir level. The investigation considers the long-term monitoring data from a well-instrumented dam along with relevant nonlinear finite element analyses. The findings of this study may be summarised as follows:

- (a) Long-term geodetic monitoring of large structures, such as earth dams, is essential for establishing their safety and structural health.
- (b) Soil consolidation after the construction of the embankment is observed to be the dominant factor affecting the long-term dam settlements.
- (b) A correlation between the displacements and reservoir level fluctuations is observed: their dominant frequencies are identical, suggesting seasonal variations of dam settlements.
- (c) Reservoir level fluctuations appear to affect the displacements of the dam, but that was found to have a smaller effect compared to that of long-term consolidation.

## Acknowledgements

Assistance, data and information were provided by S. Patsali, and E. Kanonistis of the Cyprus Water Development Department. Students C. Temenos, G. Stavrou, C. Constantinou and A. Pantelidou of NTUA and CUT participated in the field measurements and data processing. This contribution is gratefully acknowledged.

## References

- Alonso, E.E., Olivella, S. and Pinyol, N.M., (2005).** *A review of Beliche Dam.* Géotechnique, 55 (4) 267-285.
- Bridle, R. and Fell, R. eds., (2013).** *Internal erosion of existing dams, levees and dykes, and their foundations.* Bulletin 164, Volume 1: Internal Erosion Processes and Engineering Assessment.
- Charles, J.A., (2008).** *The engineering behaviour of fill materials: the use, misuse and disuse of case histories.* Géotechnique, 58(7) 541-570.
- Constantinou, C., (2013),** *Monitoring the defromation of Kouris dam in Cyprus by using GNSS measurements.* Diploma thesis (in Greek), Cyprus University of Technology, Cyprus.
- Dounias, G.T., Anastasopoulos, K. and Kountouris, A., (2012).** *Long-term behaviour of embankment dams: seven Greek dams.* ICE-Geotechnical Engineering, 165(3) 157-177.
- Elgamal, A.W.M., Scott, R.F., Succarieh, M.F., Yan, L., (1990).** *La Villita dam response during five earthquakes including permanent deformation.* Journal of Geotechnical Engineering, 116(10) 1443-1462.
- Gikas, V. and Sakellariou, M., (2008).** *Settlement analysis of the Mornos earth dam (Greece): Evidence from numerical modeling and geodetic monitoring.* Engineering Structures, 30(11) 3074-3081.
- Kyrou, K., Penman, A. and Artemis, C., (2005).** *The first 30 years of Lefkara Dam.* ICE-Geotechnical Engineering, 158(2)113-122.
- Lambrou, E., (2007),** *Accurate definition of altitude difference with geodetic total stations (in Greek),* Technika Chronika, 10, (1-2) 37-46.
- Lambrou, E. and Pantazis, G., (2007),** *A convenient method for accurate height differences determination,* Sofia.
- Lambrou, E. and Pantazis, G., (2010),** *Applied Geodesy,* Athens: Ziti.
- Lomb, N.R., (1976).** *Least-squares frequency analysis of unequally spaced data.* Astrophysics and space science, 39(2) 447-462.
- Pantelidou, A., (2013),** *Monitoring the vertical displacements of Kouris dam in Cyprus by usng modern accurate methods.* Diploma thesis (in Greek), Cyprus University of Technology, Cyprus.
- Pelecanos, L., Kontoe, S. and Zdravković, L., (2013).** *Numerical modelling of hydrodynamic pressures on dams.* Computers and Geotechnics, 53, 68-82.
- Pelecanos, L., Kontoe, S. and Zdravković, L., (2015).** *A case study on the seismic performance of earth dams.* Géotechnique, 65(11) 923-935.
- Pelecanos, L., Kontoe, S. and Zdravković, L., (2016).** *Dam–reservoir interaction effects on the elastic dynamic response of concrete and earth dams.* Soil Dynamics and Earthquake Engineering, 82, 138-141.
- Pytharouli, S.I. and Stiros, S.C., (2005).** *Ladon dam (Greece) deformation and reservoir level fluctuations: evidence for a causative relationship from the spectral analysis of a geodetic monitoring record.* Engineering Structures, 27(3) 361-370.
- Scargle, J.D., (1982).** *Studies in astronomical time series analysis. II-Statistical aspects of spectral analysis of unevenly spaced data.* The Astrophysical Journal, 263, 835-853.
- Shire, T. and O’Sullivan, C., (2013).** *Micromechanical assessment of an internal stability criterion.* Acta Geotechnica, 8(1) 81-90.
- Shire, T. and O’Sullivan, C., (2016).** *Constriction size distributions of granular filters: a numerical study.* Géotechnique, 66(10) 826-839.
- Tedd, P., Charles, C.J.A., Holton, I.R., Robertshaw, A.C., (1997).** *The effect of reservoir drawdown and long-term consolidation on the deformation of old embankment dams.* Geotechnique, 47(1) 33-48.
- Temenos, C., (2007),** *Monitoring the deformations of Kouris dams in Cyprus.* Diploma thesis (in Greek). Diploma Thesis, National Technical University of Athens, Greece.