

FIG Pacific Small Island Developing States Symposium

Policies and Practices for Responsible Governance



Fiji 18–20 September 2013

CC-BY 2.5, photo by Matt Wright



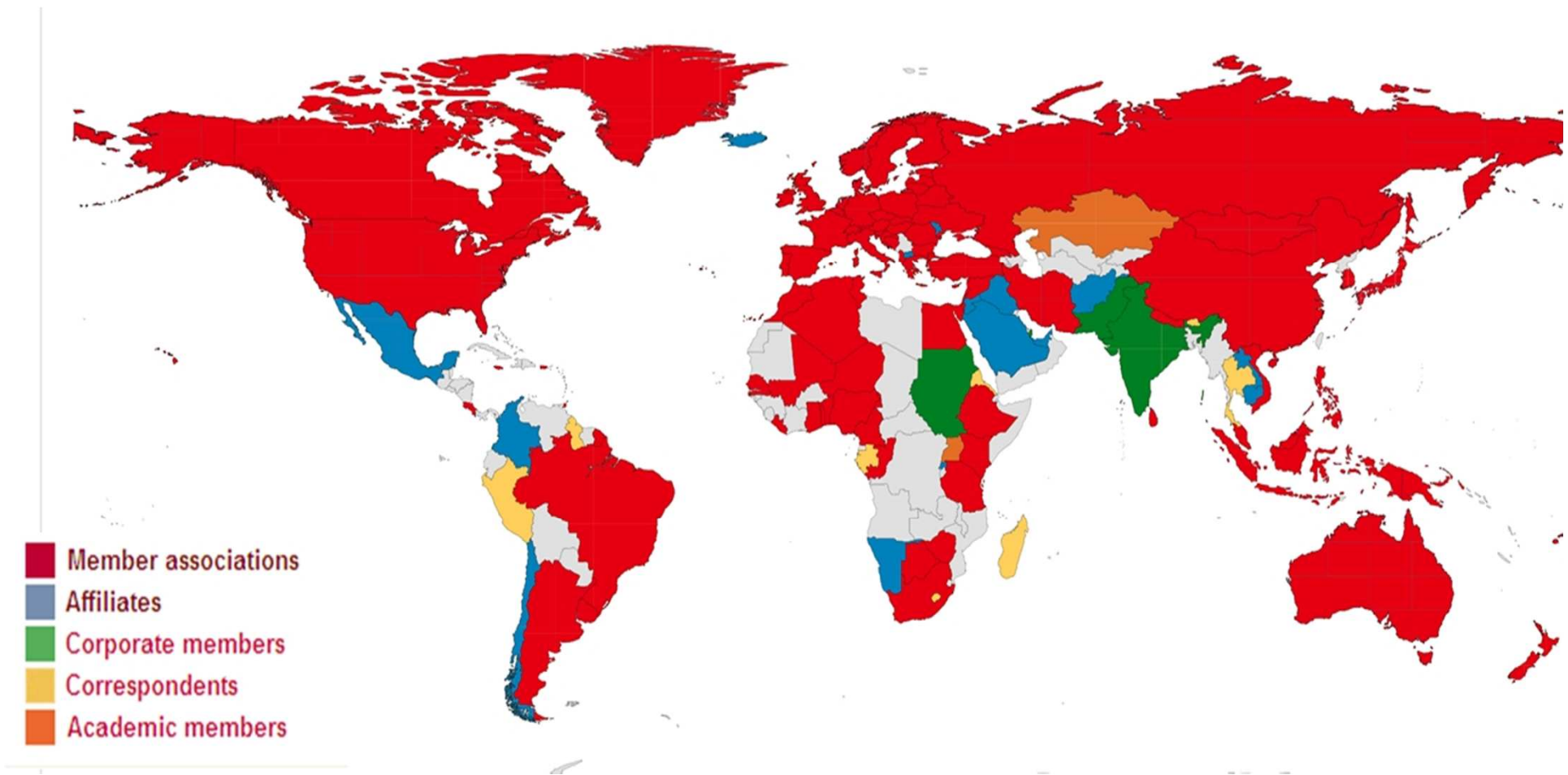
Policies and Practices for Responsible Governance

FIG Pacific Small Island Developing States Symposium

Novotel Conference Centre, Suva, Fiji

18 – 20 September 2013





Member Associations; Affiliate Members; Academic Members; Corporate Members & Correspondents
120+ Countries

FIG Council

FIG Commission 1
Professional
Practice

FIG Commission 2
Professional
Education

FIG Commission 3
Spatial
Information
Management

Commission 4
Hydrography and
Administration of
Marine Spaces

Commission 5
Positioning and
Measurement

Commission 6
Engineering
Surveys

Commission 7
Cadastre and
Land
Management

Commission 8
Spatial Planning
and Development

Commission 9
Valuation and
Management of
Real Estate

Commission 10
Construction
Economics and
Management

Standards Network

Young Surveyors Network

Task Force for Africa

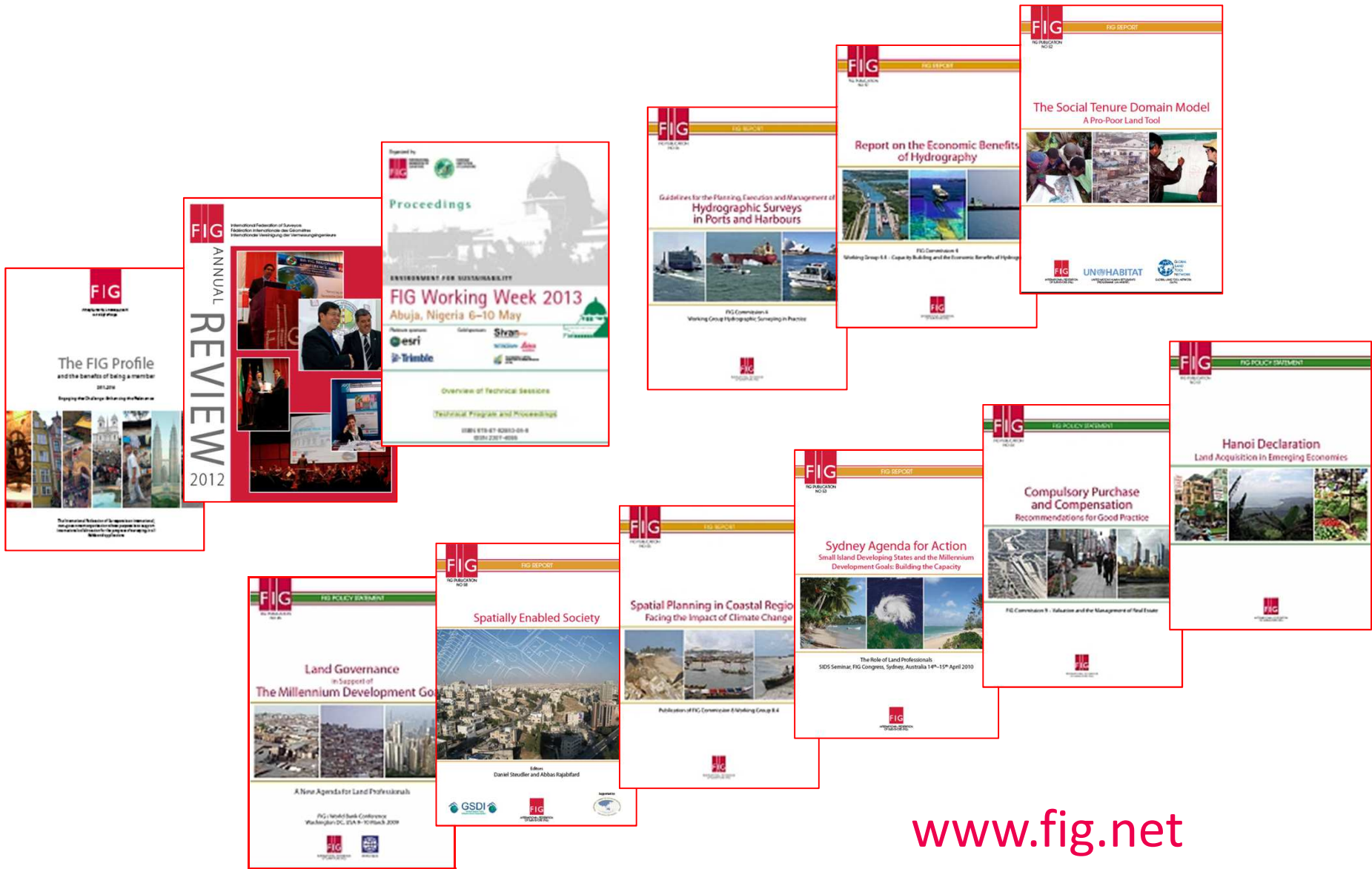
**Task Force on Surveyors
and Climate Change**

**Task Force on Property
and Housing**

**FIG Permanent Institution on History of
Surveying and Measurement**

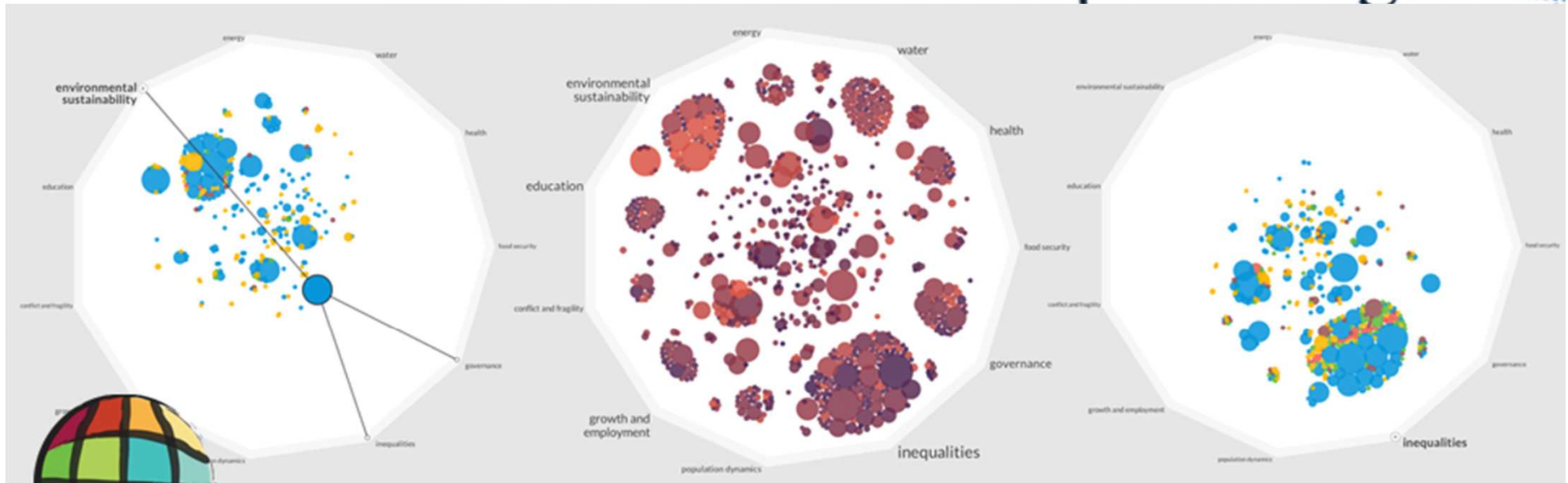
**FIG International Office of Cadastre and
Land Records**

FIG Foundation



www.fig.net

High-level Panel the Post-2015 Development Agenda



The High Level Panel Report is of the view that “business-as-usual is not an option. We concluded that the post-2015 agenda is a universal agenda. It needs to be driven by five big transformative shifts”



RIO+20

United Nations Conference on Sustainable Development

“Recognize the importance of comprehensive hazard and risk assessments, and knowledge and information sharing, including reliable geospatial information”

*‘The Future We Want’
2012 Rio +20 Conference*

VOLUNTARY GUIDELINES ON THE
**Responsible
 Governance of Tenure**
 OF LAND, FISHERIES AND FORESTS IN
 THE CONTEXT OF NATIONAL FOOD SECURITY

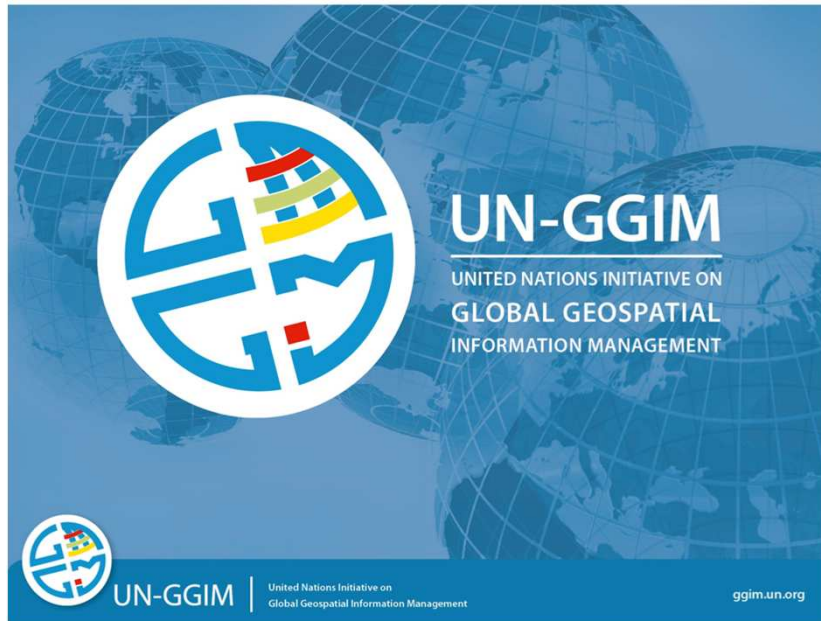


Endorsed on 11th May 2012 by
 the United Nations Committee
 on World Food Security

“We now have a shared vision.
 It’s a starting point that will help
 improve the often dire situation
 of the hungry and poor”

Jose Graziano da Silva
 (FAO Director General)
 May 2012

ACCESS TO LAND, FISHERIES AND FORESTS 

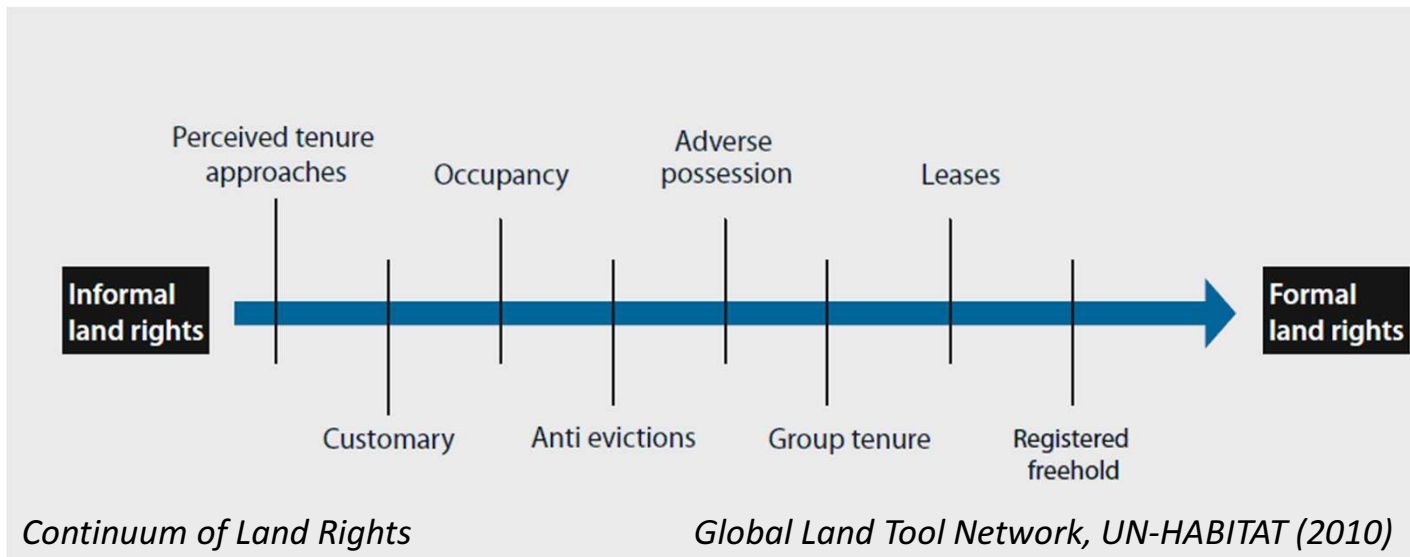


“Sound geospatial information is crucial for addressing the complex problems the world is facing today. These problems are global in nature and affect different regions, rural and urban areas alike, requiring coordinated efforts, more innovative and sophisticated approaches, as well as effective tools to ultimately guide our way to sustainable development”

*Prof. Paul Cheung
(UN Statistics Division & GGIM Secretariat),
February 2012*



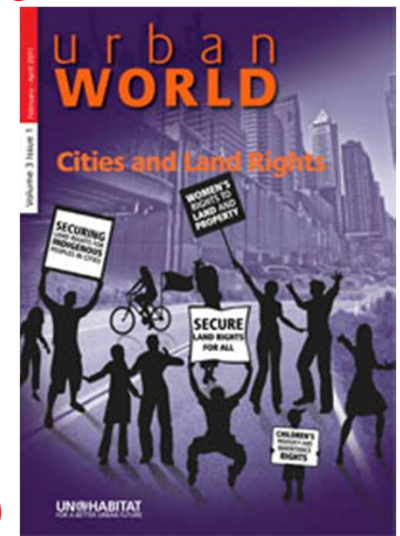
The Social Tenure
Domain Model
A Pro-Poor Land Tool
FIG Publication No. 52



include rights that are documented as well as undocumented, from individuals and groups, from pastoralist and informal settlers, that are legal as well as extra-legal and informal

“Land is a scarce resource involving a wide range of rights and responsibilities. When poorly managed, it can become contentious often leading to disputes, conflict, degradation and other problems, all of them drivers of slum development and poverty in urban areas.”

(UN-Habitat)





INTERNATIONAL
STANDARD

ISO
19152

First edition
2012-12-01

**Geographic information — Land
Administration Domain Model (LADM)**

*Information géographique — Modèle du domaine de l'administration
des terres (LADM)*

INTERNATIONAL
STANDARD

ISO
19152

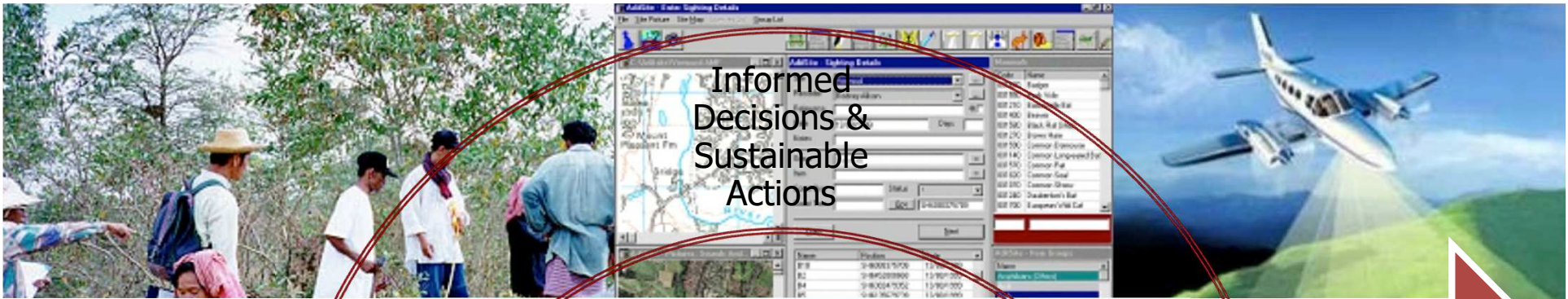
First edition
2012-12-01

Geographic information — Land
Administration Domain Model (LADM)

Information géographique — Modèle du domaine de l'administration
des terres (LADM)

Reference number
ISO 19152:2012(E)

© ISO 2012



Manage Knowledge



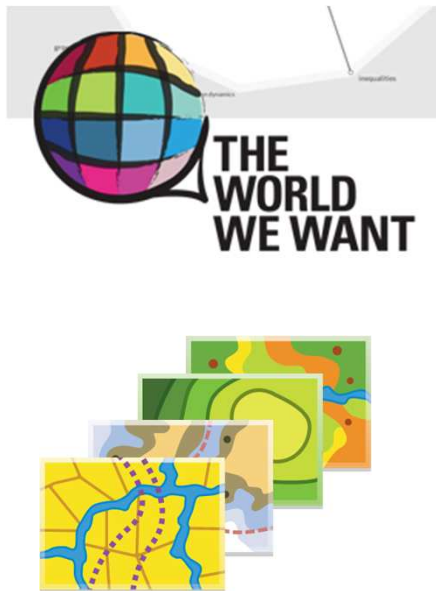
Measure Data

Policies **Places** **Peoples**



UN Conference on Small Island Developing States Apia, Samoa | 2014

The Third International Conference on Small Island Developing States will be held from 1 to 4 September 2014 in Apia, Samoa, will focus the world's attention on a group of countries that remain a special case for sustainable development in view of their unique and particular vulnerabilities.



Challenge & Opportunity:

Will spatial knowledge with responsible policies and practices be the key that unlocks the wealth of existing knowledge about social, environmental and economic matters leading to a sustainable future?; and

Can surveying sciences and technologies, knowledge and practices provide the geography to “The World We Want”?

FIG


KUALA LUMPUR
2014

XXV FIG Congress

"Engaging the Challenges, Enhancing the Relevance"

16 - 21 JUNE 2014, MALAYSIA



***FIG Pacific Small Island Developing States Symposium
Policies and Practices for Responsible Governance***



**Novotel Conference Centre, Suva, Fiji
18 – 20 September 2013**