



Strategy of an integrated LAS in Korea

2007. 5. 21

**Lee, Young-ho(KCSC)
Lee, Seong-hwa(MOGAHA)
Yang, Geun-ou(MOGAHA)**

Contents

Background

Analyses of current LA

Data workflow within LA

Strategy for an integrated LAS

Conclusion



Background

LA data is a main sector for successful e-government

Customer demands faster and better LA services

Lack of collaboration between LA organizations

Development of geo-policy on adequate LA context



Analyses of current LA



Cadastre, Taxation

Land Tenure

(Justice and Law)



Real Estate registry

Land Administration

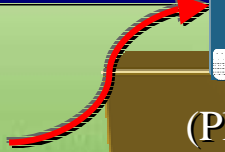
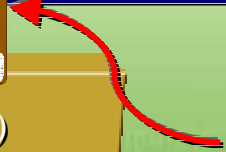
Land Values

(Finance and Taxation)



Land Use

(Planning and Environment)





Analyses of current LA

PBLIS

Development period

(1999.8 ~ 2002.12)

- Main objectives
 - Management of cadastral map
 - Computation of
 - Cadastral surveying
 - Supply cadastral data

LMIS

Development period

(1996.8 ~ 2002.12)

- Main objectives
 - Land Use & Land Planning
 - Public land valuation
 - Management of foreigner land

KLIS

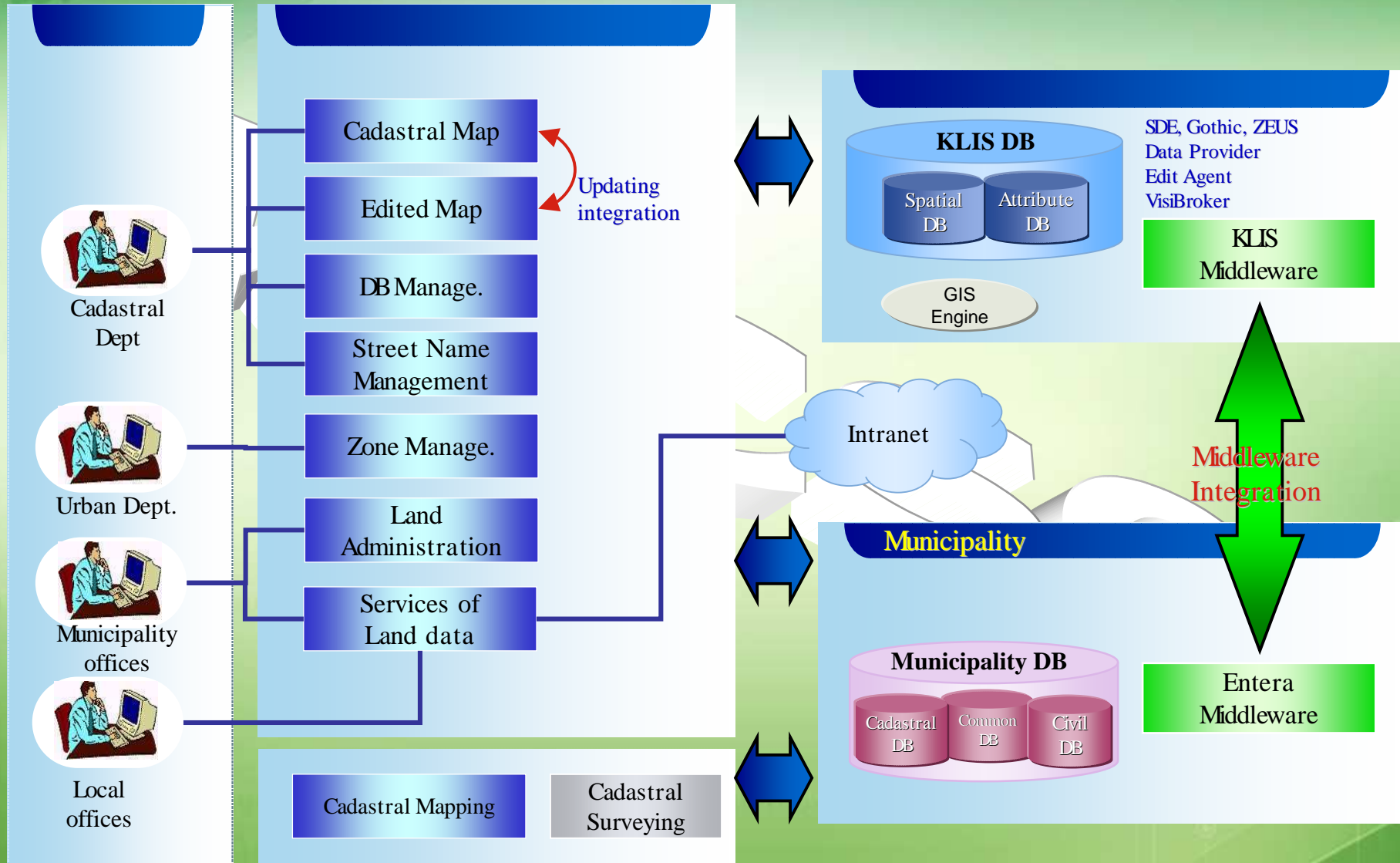
2001. 6 : Decision of development direction of KLIS

2003.6 ~ 2004.7 : Completion of KLIS development

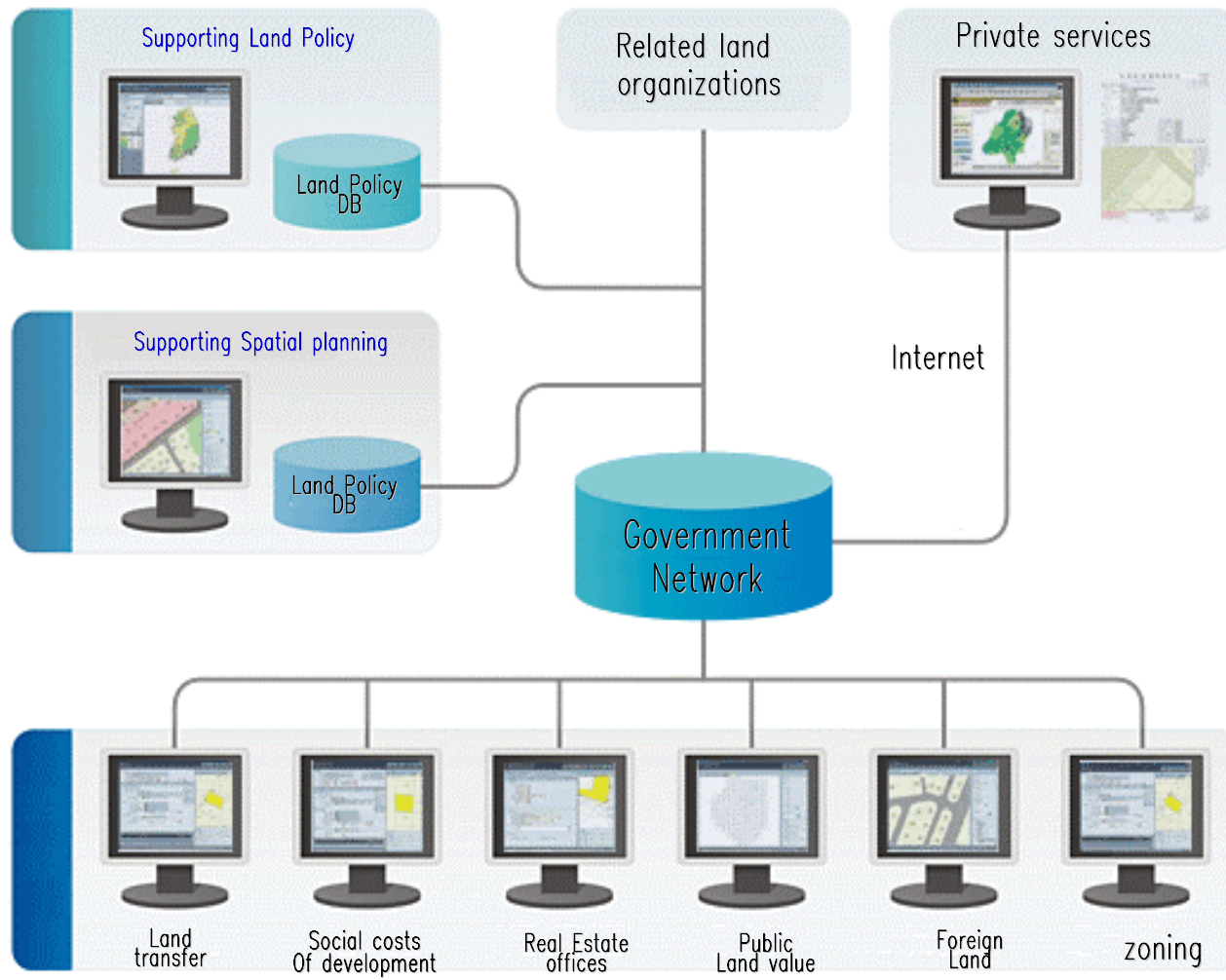
2004.9 ~ 2005.2 : System adjustment & testing

2005.6 ~ 2006.4 : Spread KLIS nationwide

Korea Land Information System (KLIS)



Land Management Information System (LMIS)

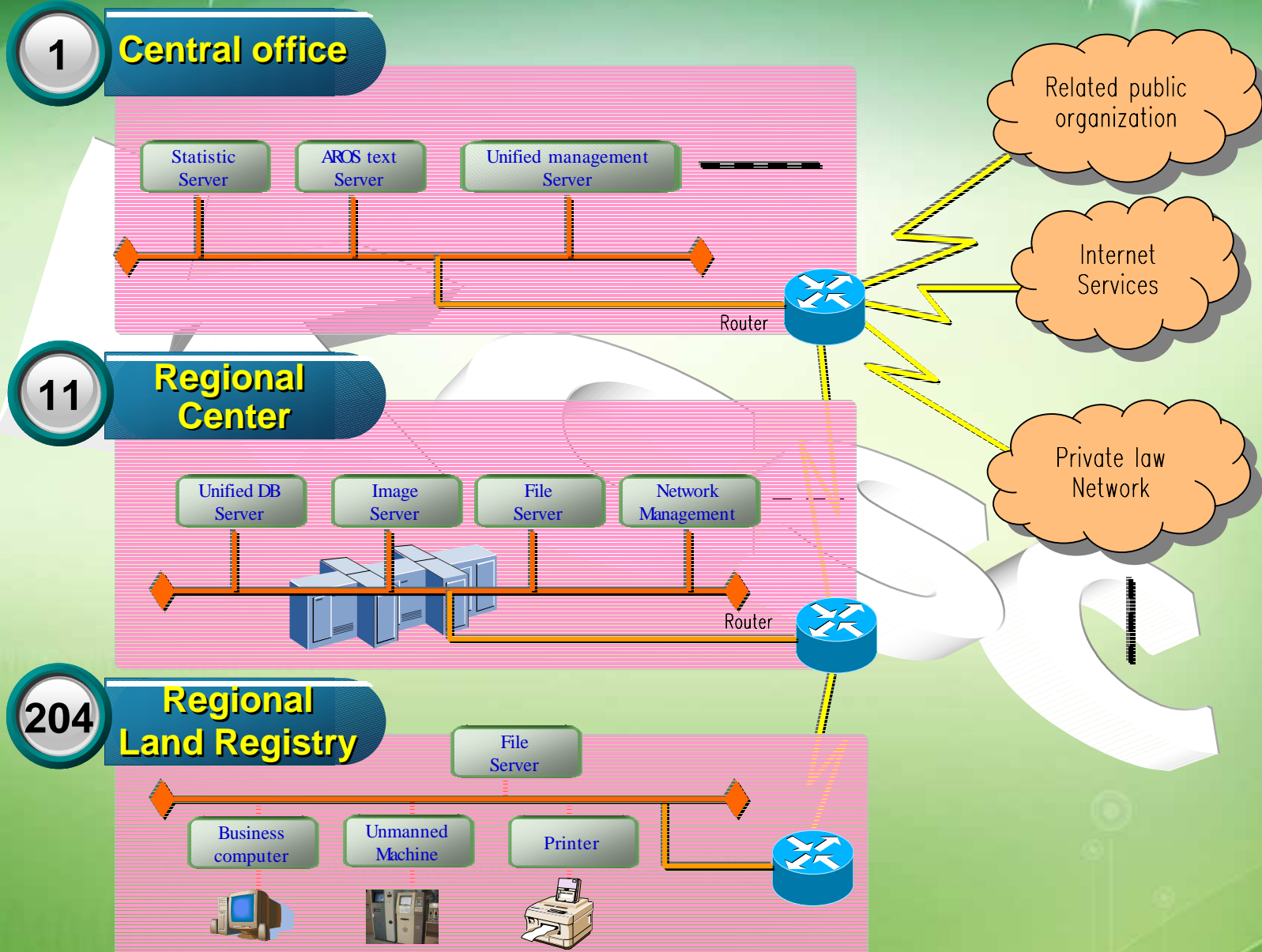


History of Automated Registry Office Systems (AROS)

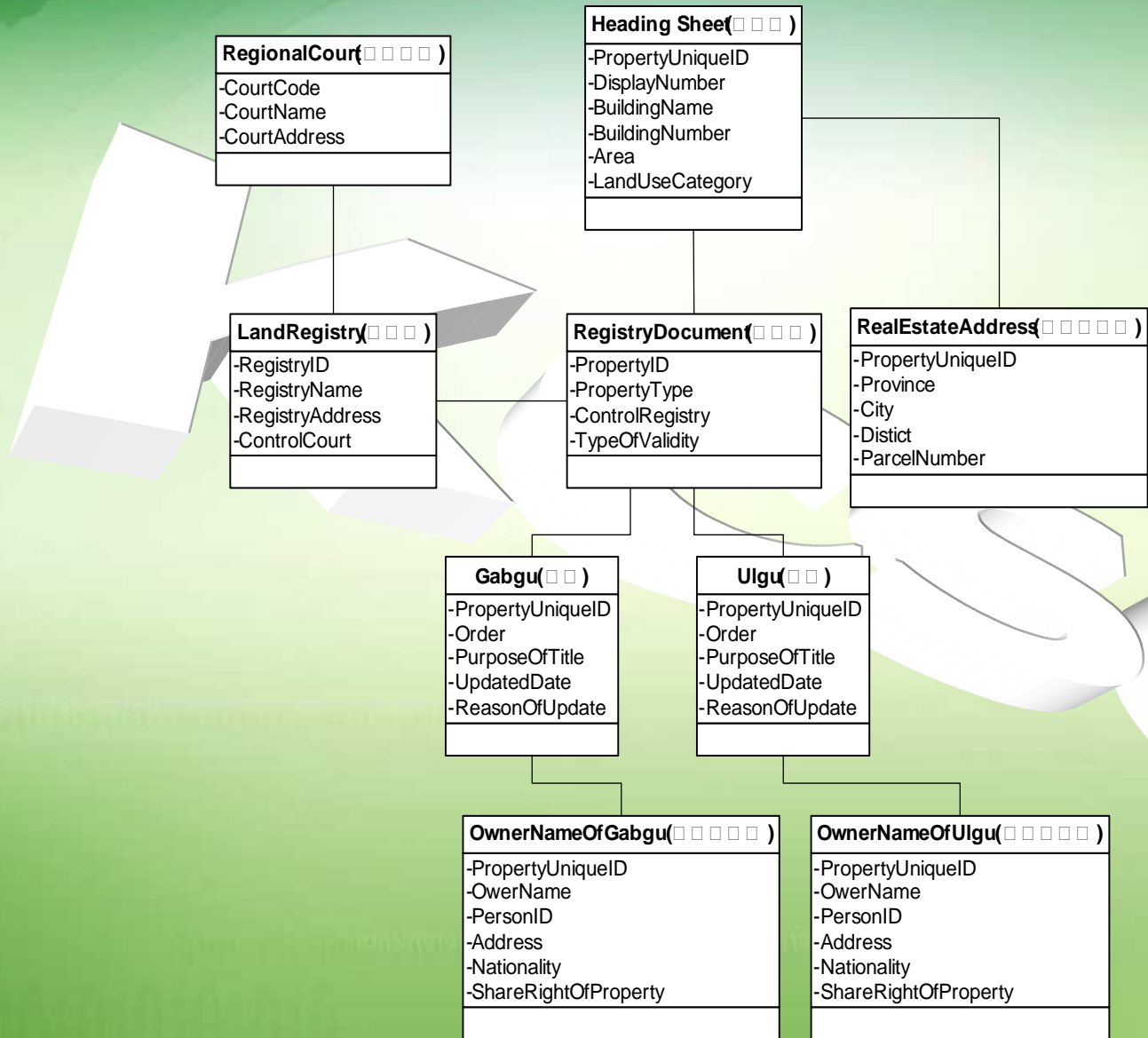
- 1993 – Design of strategic planning for AROS
- 1994 ~ 1996 – Converting analogue data to digital format
- 1997 ~ 1998 – Testing & Pilot operation
- 1999 ~ 2002 – Spread AROS to whole land registry offices
- 2003. 9 – Supreme court was launched **second project**
 - Web based land registry business
 - Collaboration with related organizations
 - Internet service for private sectors

System architecture of ARCS

[부동산등기시스템 구성도]

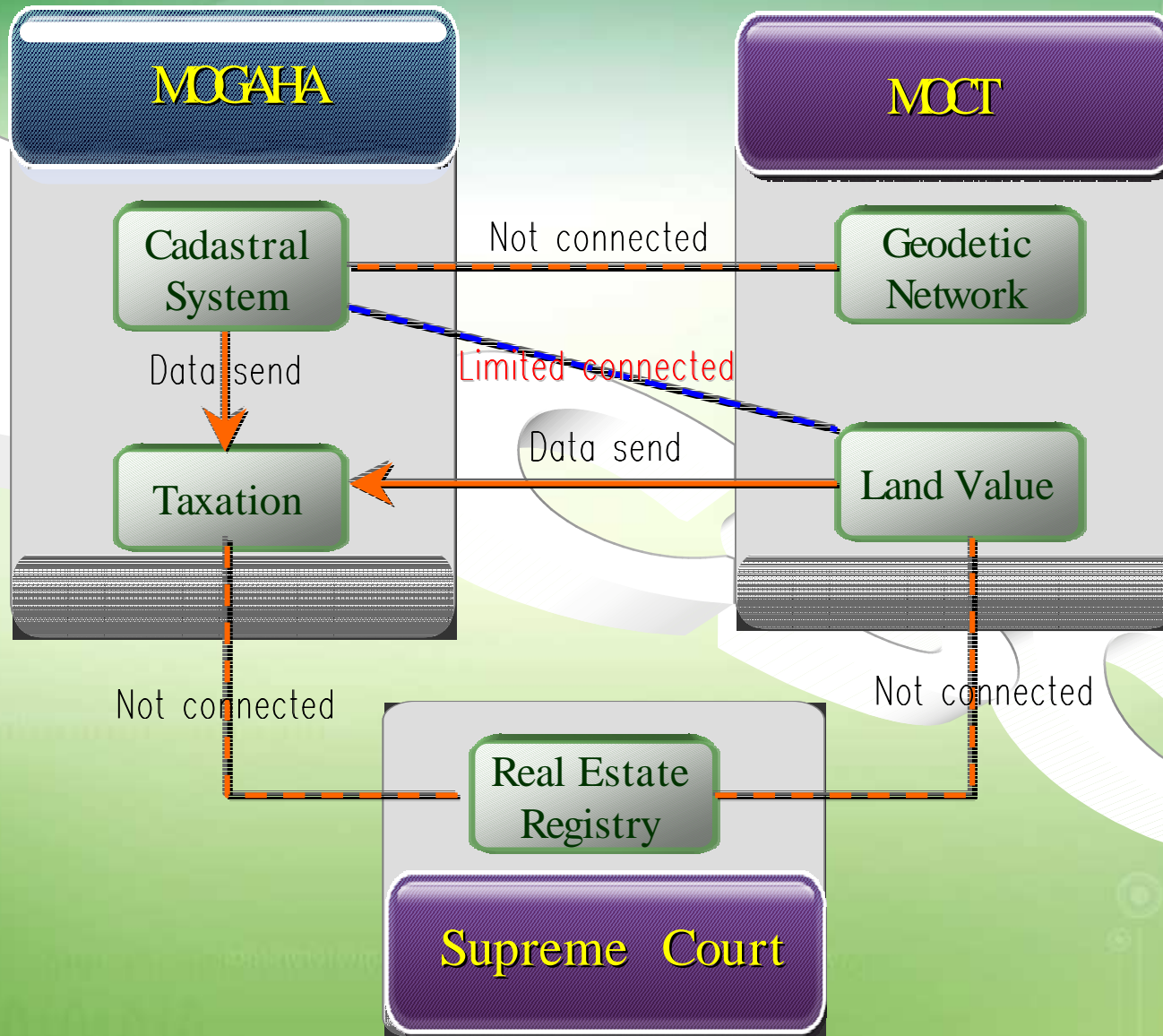


Class diagram of AROS



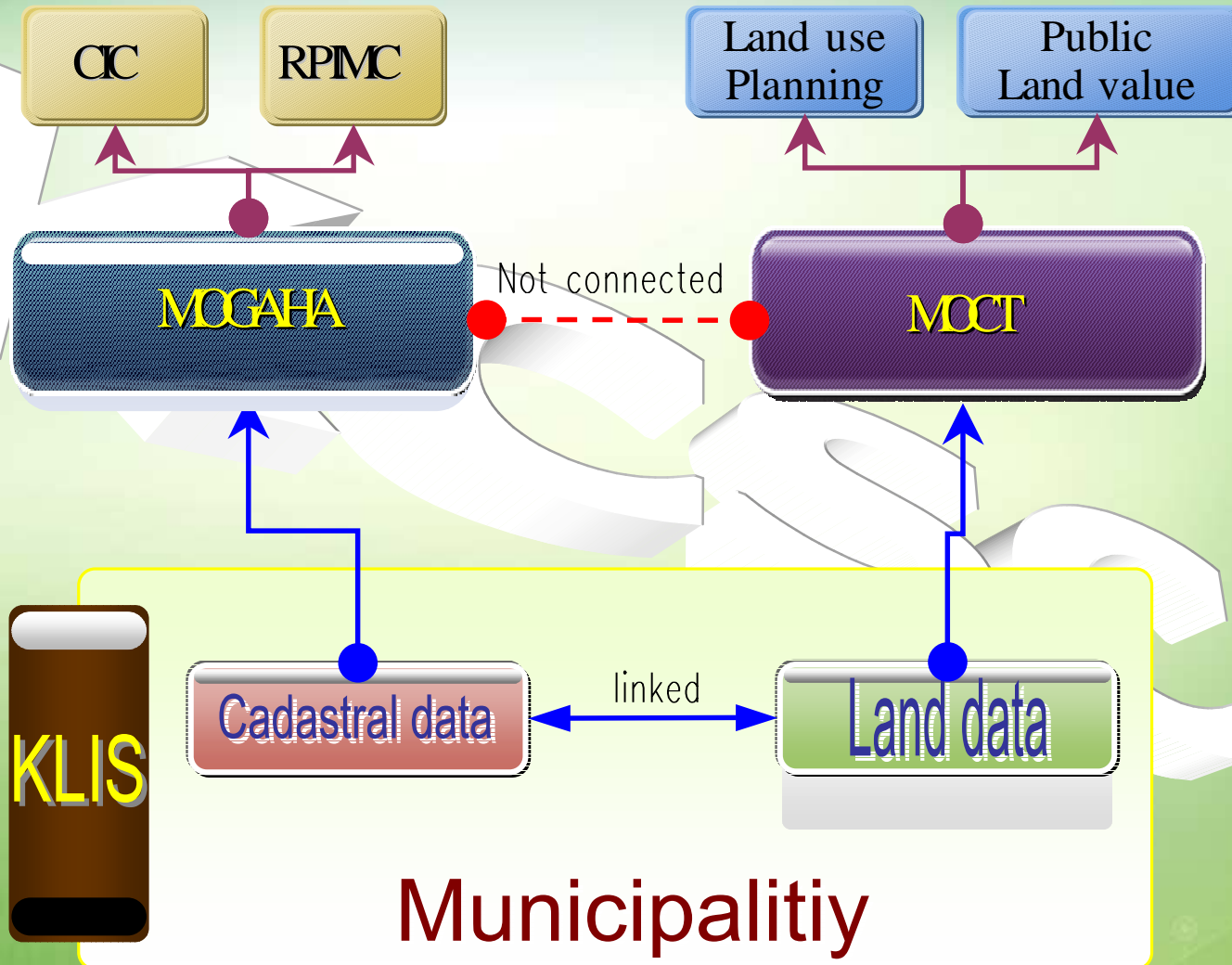


Current Data workflow within LA





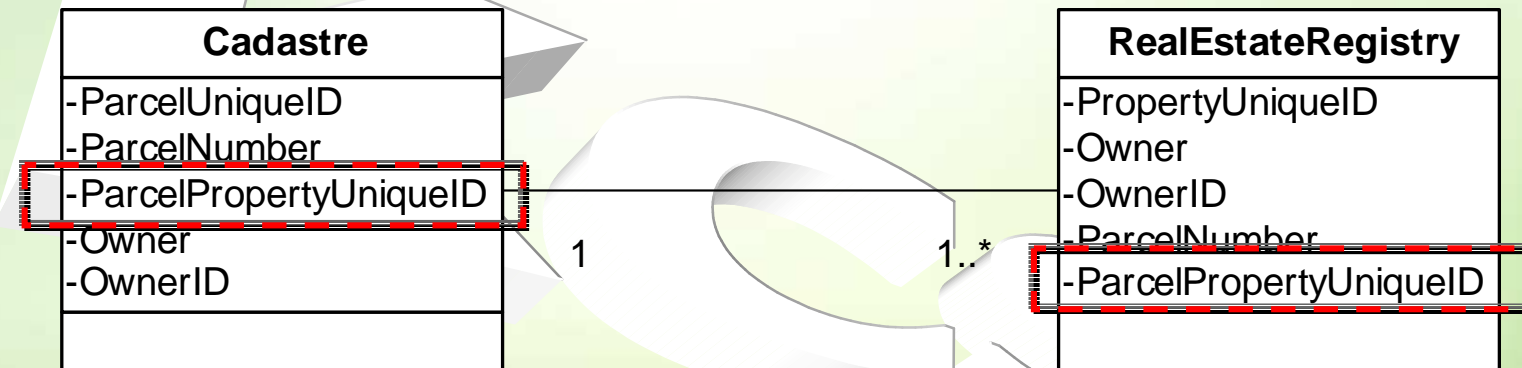
Current Data workflow within LA





Strategy for an integrated LAS

Proposed model for integrating cadastral and real estate registry



Create common Unique ID

- Real property has one or more parcels
- A parcel has at least a real property



Strategy for an integrated LAS

Strategic objectives

- ◆ Supply the largest possible quantity of information to external public agents
- ◆ Prevent the need for citizens to visit land administration offices
- ◆ Satisfy the information requirements of public and private customers
- ◆ Guarantee not just availability, but also up to date data information
- ◆ Integrity and consistency between cadastral data, taxation, land use, land use planning, real estate
- ◆ Automatic transaction between cadastral system and real estate system

Strategic Actions

- ◆ Creation a commission between Land administration organizations
- ◆ Development of geo-policy on adequate LA context
- ◆ Common investment for building human capacity
- ◆ Creation an integrated LA system to adjust and harmonize national geodetic network
- ◆ Supplying LA data for public agents regularly
- ◆ Providing and developing diverse products and services based on LAS

Conclusion

- The systematic management of the land will enable and help to make right administrative decisions
- Collaboration between LA organizations should be supported a basis of establishment of a good land administration in Korea
- LAS will be guaranteed transparent information and provided integrated spatial data for possibility of multiple analyses



Thanks for your attention