

# **FIG Task Force on FIG Commission Structure**

**report to General Assembly 2016**

Mikael Lilje, Chair of the Task Force

# Based on two proposals

**Proposal from Geosuisse** submitted 2014  
regarding how commission chairs elect are elected

**Proposal regarding Structural Improvements**  
submitted 2015 by

- Danish Association of Chartered Surveyors (Denmark)
- Finnish Association of Geodetic and Land Surveyors MIL (Finland)
- Norges Jordskifte kandidatforening, faglig gruppe av Tekna [\(NJKF\)](#) (Norway)
- Swedish professionals for the built environment

# Task Force Members

- Mikael Lilje, Chair of Task Force
- Brian Coutts
- Stephen Djaba
- Henning Elmstrøm
- Kate Fairlie
- Brent Jones
- Jürg Kaufmann
- Robert Sarib
- Winnie Shiu
- Rudolf Staiger
- Karl-Friedrich Thöne/Hansjörg Kutterer

# The Task Force will ...

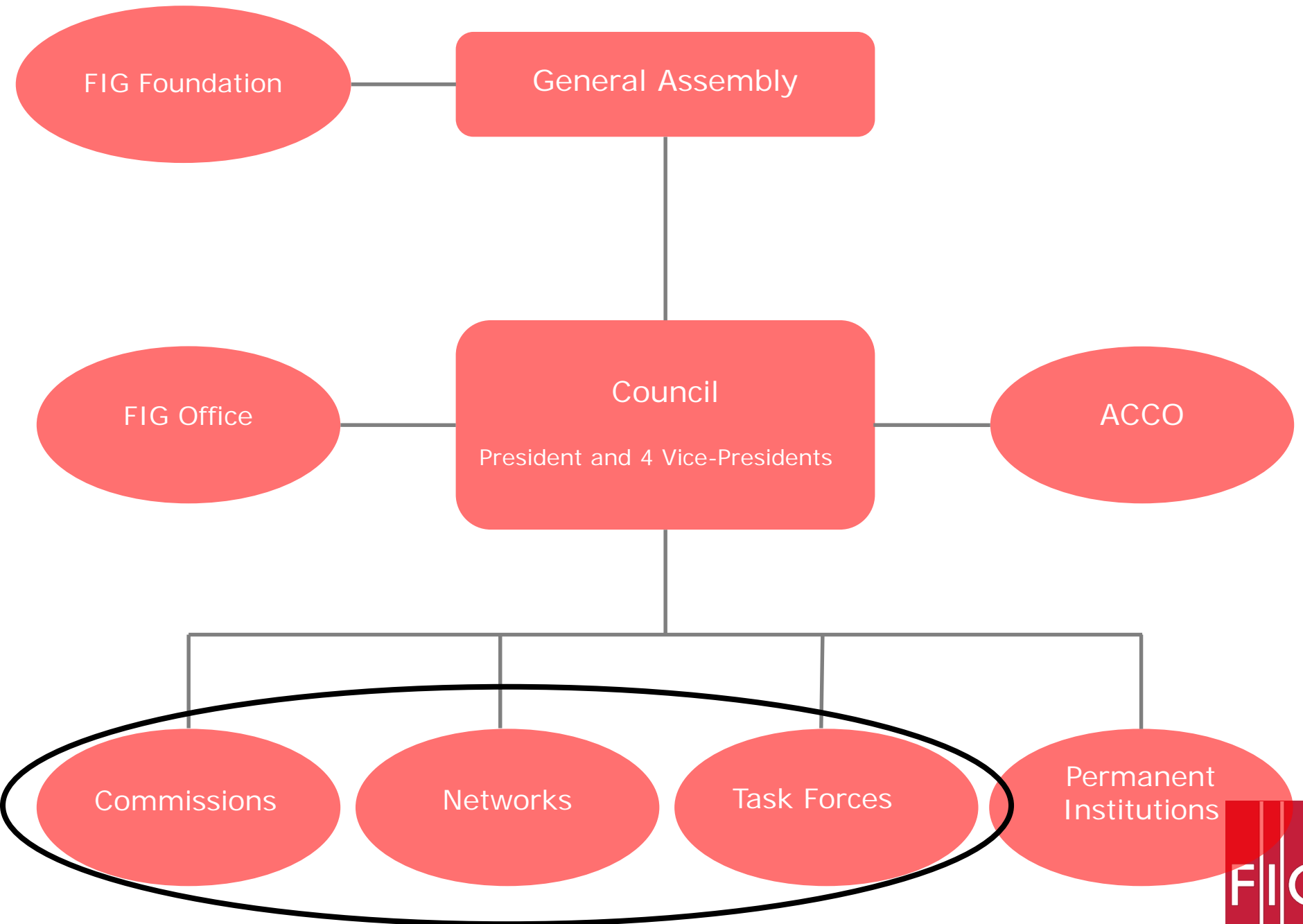
- evaluate the current Commission structure and content (includes Task Forces, Networks)
- review the process regarding Chairs-Elect for Commissions.
- present a FIRST proposal at the FIG WW in 2016 for discussion and feedback.  
(Open meeting during lunch on Wednesday, (12.45 – 14.00, Concourse Room))

# The Task Force has not...

.. evaluated the entire FIG internal structure. We have though included Networks and Task Forces but excluded ACCO, Council and Office.

... proposed changes to the definition of the Functions of the Surveyor

... reviewed any official strategies or documents



# The Task Force will today...

... present a FIRST PROPOSAL to be discussed during FWW 2016

... and seek feedback from members !

# The Task Force suggests the following changes to the structure for FIG

Consolidate the number of commissions to FOUR.

- *Spatial Information, Data Management and Systems*
- *Cadastral*
- *Positioning, Measurement and Reference Systems*
- *Spatial Planning, Land and Marine Management*

Implement FOUR FIG Networks;

- *Education, Professional Development and Ethics*
- *Standards*
- *Young Surveyors*
- *Regional Capacity Development*

Improve the use of professional Task Forces within FIG



- Drivers for change
- Review of current structure

# Main drivers for Change ... 1

- Societal, economic, environmental and technological changes over time. FIG must progress alongside the profession.
- Addressing Global issues, emerging issues related to gender equity for women's access to land and education
  - Poverty, sustainable land development
  - Climate change
  - Urbanisation
- Current commission structure more or less the same since decades.

# Main drivers for Change ... 2

To manage these social, economic and technological advances, changes and challenges;

- FIG needs to be more efficient and effective
- FIG must be proactive in identifying mega trends
- FIG should challenge these mega trends
- FIG need to be aware of its role in the international stage

# Summary of the review of FIG Commission structure (1 of 2)

Area of challenge	Problem	Recommendation
Commission	<ul style="list-style-type: none"><li>- Lack of interaction between Commissions</li><li>- Varying size of Commissions</li><li>- Achievement levels of Commissions.</li></ul>	<ul style="list-style-type: none"><li>- Streamline Commissions</li><li>- Create more flexible Task Force structure</li><li>- Election changes, determined by Commissions</li><li>- ACCO rep to come from VP instead of Commissions?</li></ul>
Communication	<ul style="list-style-type: none"><li>- Social media</li><li>- Overlap/communication with other fields/organisations</li></ul>	<ul style="list-style-type: none"><li>- Develop communication strategy for FIG</li><li>- Review databases (resources)</li></ul>

# Summary of the review of FIG Commission structure (2 of 2)

Area of challenge	Problem	Recommendation
Member Associations	<ul style="list-style-type: none"><li>- Justifying membership</li><li>- Promoting visibility of surveying (declining membership)</li></ul>	<ul style="list-style-type: none"><li>- Identify value adds in additions to meetings</li></ul>
Private sector	<ul style="list-style-type: none"><li>- Struggle to see value in FIG</li></ul>	<ul style="list-style-type: none"><li>- Strategy to directly address private sector</li><li>- Closer ties between private sector and Commissions</li><li>- Single cooperate sponsor payment, rather than per event</li></ul>

Is the current structure with more or less the same 10 commissions since many years prepared to meet the future challenges?

Our conclusion is that if we would like to change the structure, now is a good opportunity!

# Mapping between current and “new” Commissions

4 new Commissions	<i>Positioning, Measurements and Reference Systems</i>	<i>Spatial Information, Data Management and Systems</i>	<i>Cadastral</i>	<i>Spatial Planning, Land and Marine Management</i>
Current Commissions	<i>Com 4 Com 5 Com 6 Com 10</i>	<i>Com 3 Com 10</i>	<i>Com 4 Com 7</i>	<i>Com 4 Com 8 Com 9 Com 10</i>

# FIG Networks

Currently;

- FIG Regional Capacity Development Networks
- FIG Young Surveyors Networks
- FIG Standards Network

Current FIG Commission 1 (Professional Standards and Practice) and FIG Commission 2 (Professional Education) deals with the surveyor profession in general. We suggest that we merge them as well as call the Network instead with participants from all Commissions



# FIG Networks

4 new Commissions	<i>Positioning, Measurements and Reference Systems</i>	<i>Spatial Information, Data Management and Systems</i>	<i>Cadastral</i>	<i>Spatial Planning, Land and Marine Management</i>
FIG Networks	Education, Professional Development and Ethics			
	Standards			
	Young Surveyors			
	Regional Capacity Development Network			

# FIG Task Forces

Are to deal with contemporary and interesting issues established by the Council at the request of the ACCO. They exist during a limited time. Greater emphasis on Task Forces will enable cross-Commission work

Task Forces could take care of emerging issues of the societies, e.g.:

- Energy transition
- Climate change
- Land grabbing
- Rapid urbanisation
- Poverty reduction
- Regional development

# Pros regarding a change now

- Reset in terms of activity, subject/content
- Fewer active chairs to find, simpler recruitment
- More likely to create a critical mass of active people
- Better allocation of funding
- Clarity over network and commissions hierarchy/structure

# Cons regarding a change now

- Fewer commissions may lose the diversity
- More work may fall on the shoulders of Commission Chairs
- Could mean less people are engaged and active
- Commissions give a home to members and this may lose some regular attendees
- Doesn't address role of FIG with e.g. UN-GGIM etc.

# **Selection process for Commission Chairs**

# Selection process for Commission Chairs

Suggestion from the task force;

Exiting Commission officers should be involved in the assessment of the candidate. The Commission can suggest a candidate but the member organisation must always nominate the candidate. The Commission (and Member organisations) should always evaluate the candidate.

If more than one candidate exist, a Chair Selection Review Team may be established (ACCO, Council representative, Commission chair).

# Discussions!

We have presented a proposal, now we are seeking for your feedback !

Basically, are we on the right track ?

- What are the strengths and weaknesses of this proposal?
- Is there a need for a wider review of the FIG structure?
- Do we have enough of a basis to proceed (with minor changes to our proposal)?



# Summary

4 new Commissions	<i>Positioning, Measurements and Reference Systems</i>	<i>Spatial Information, Data Management and Systems</i>	<i>Cadastre</i>	<i>Spatial Planning, Land and Marine Management</i>
FIG Networks	Education, Professional Development and Ethics			
	Standards			
	Young Surveyors			
	Regional Capacity Development Network			
	Task Forces could take care of emerging issues of the societies, e.g. Energy transition, Climate change, Land grabbing, Rapid urbanisation, Poverty reduction and Regional development			
Chair-elect	Chair Selection Review Team that is made up of the ACCO-rep, one or two Vice Presidents and possibly existing Commission officers			

# What will happen this week?

- Proposal presented at first General Assembly (today!)
- Open meeting during lunch on Wednesday (12.45 – 14.00, Concourse Room)
- Presentation on second General Assembly on the progress during the week.